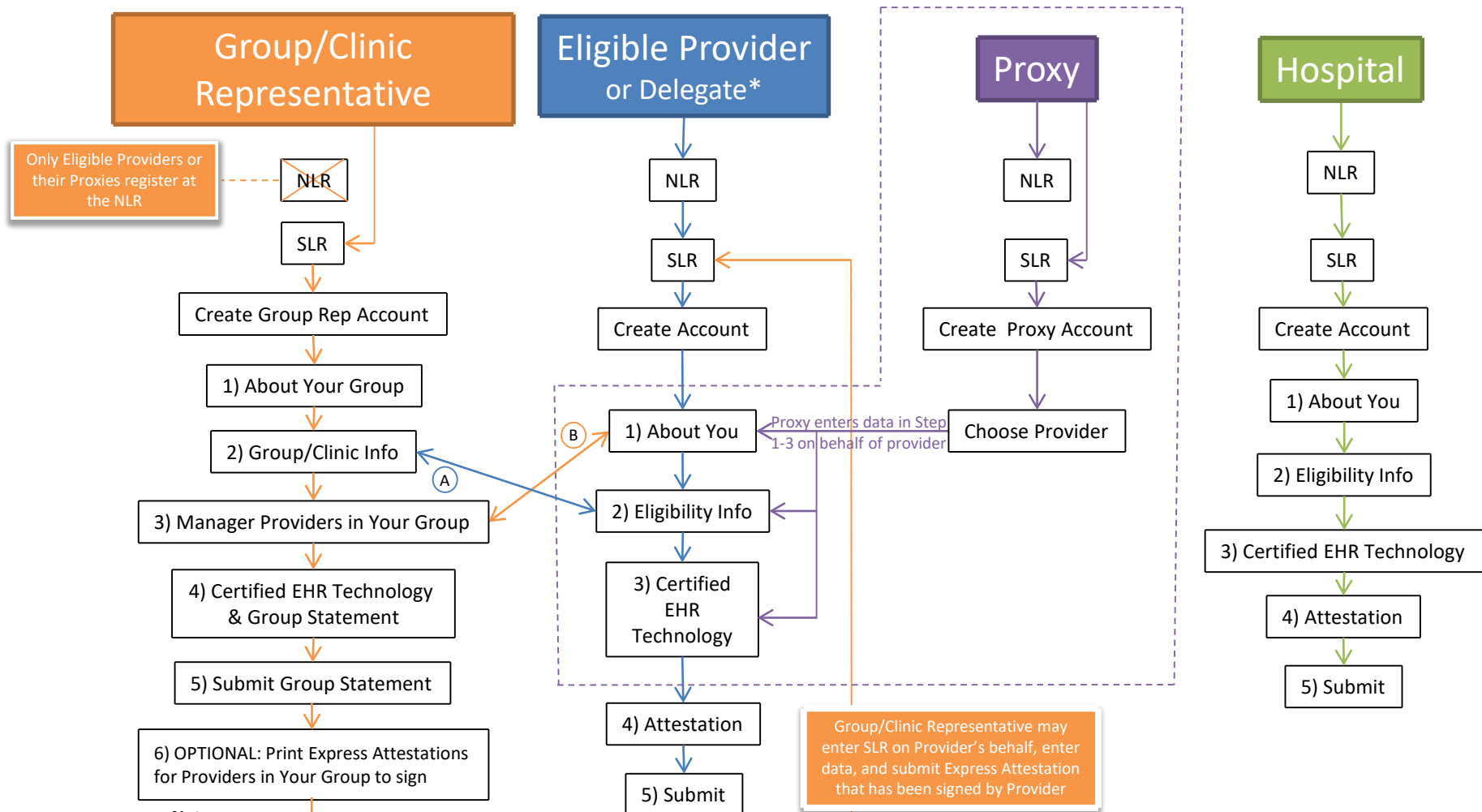


Medi-Cal Promoting Interoperability Program Registration Process Overview



Notes:

(A) If an EP chooses to establish eligibility with a group, the eligibility data entered by the group rep in Group/Clinic Representative Step 2: Group/Clinic Info will automatically populate the Provider Step 2: Eligibility.

(B) When a group rep adds a Provider to their group (Step 3. Group/Clinic Representative Manage Providers), the EP will see their group association(s) under EP Step 1: About You and can choose to establish eligibility with a group, or on their own. This designation occurs in EP Step 1: About You.

*A Provider may designate a delegate to enter the SLR on their behalf by signing the “Delegation of Authority” form. The Provider must also sign the Attestation form that is uploaded into the SLR.

Hospital

NLR

SLR

Create Account

1) About You

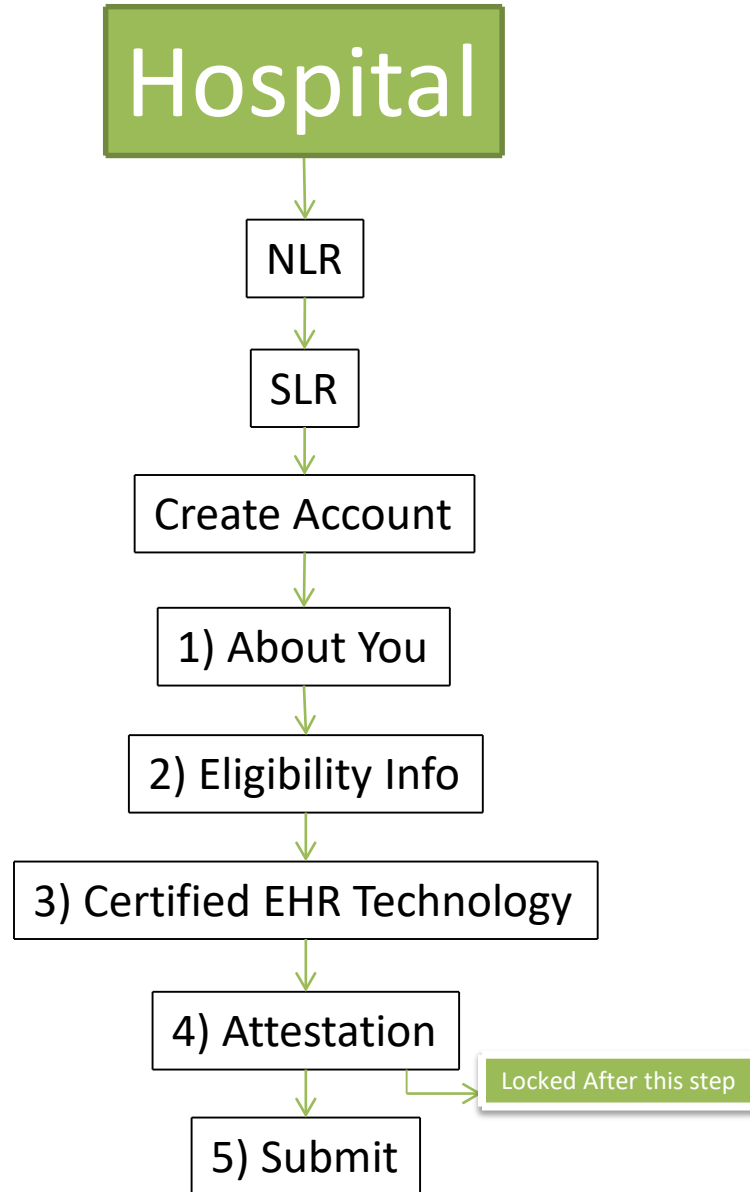
2) Eligibility Info

3) Certified EHR Technology

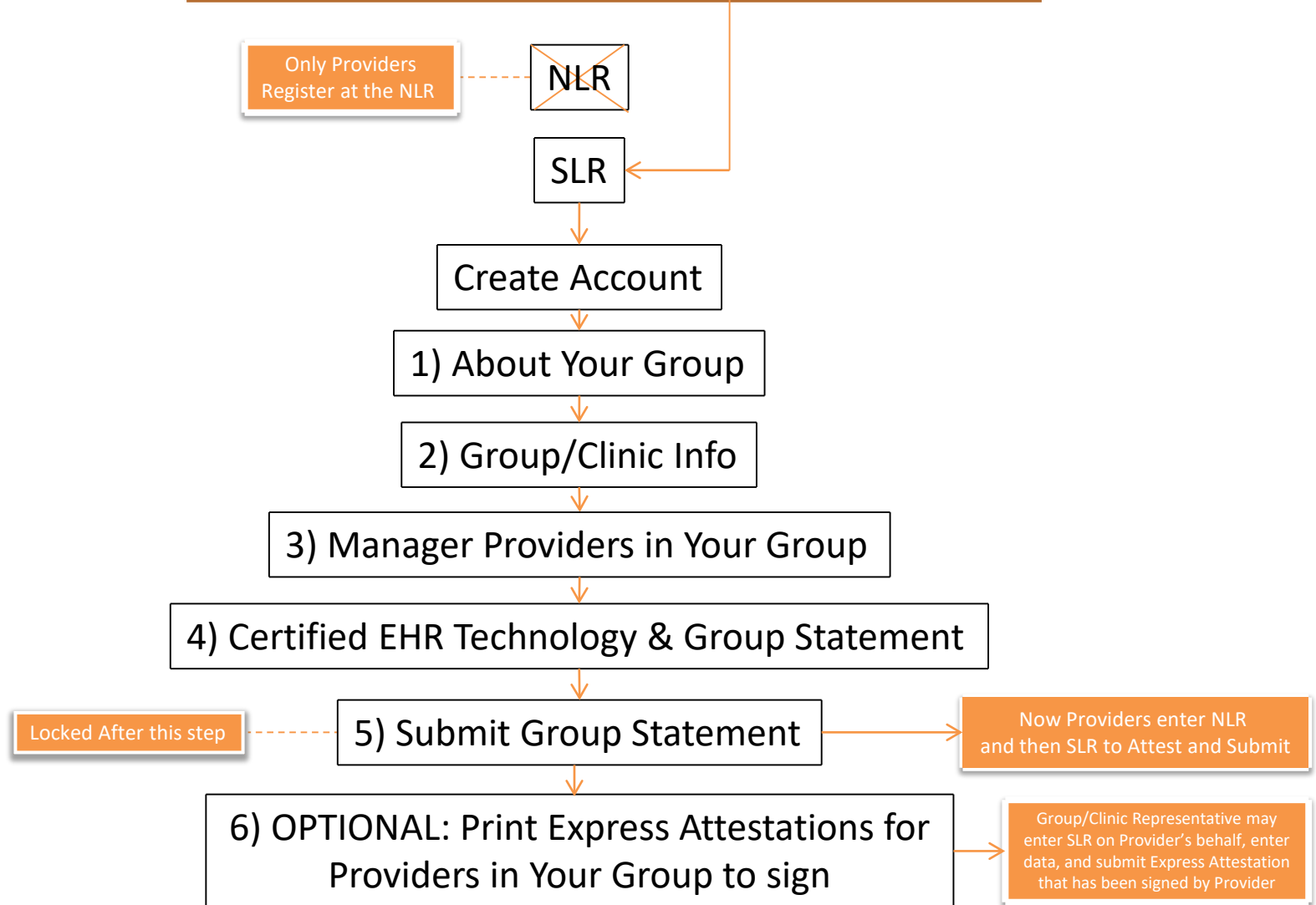
4) Attestation

Locked After this step

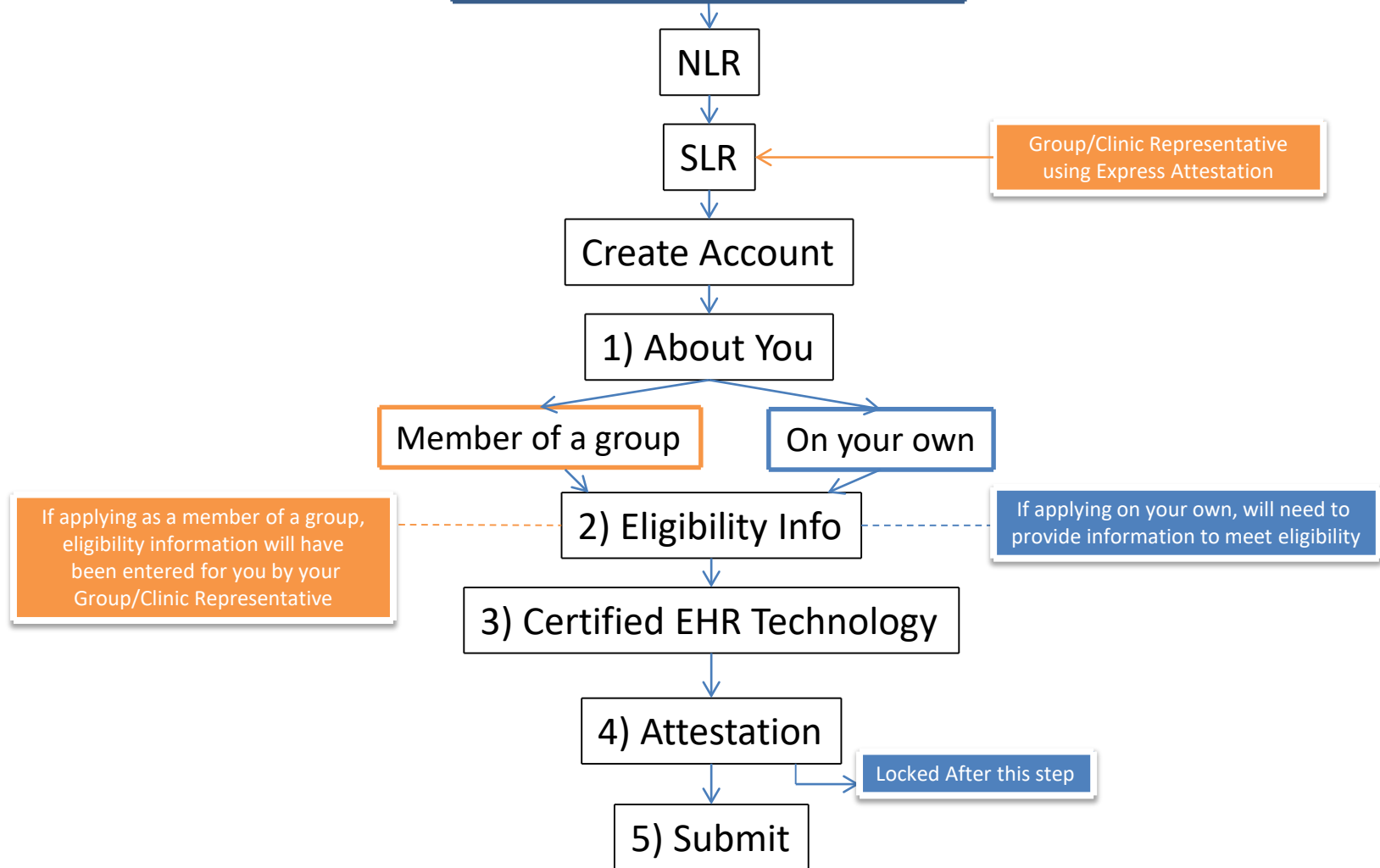
5) Submit



Group/Clinic Representative



Eligible Provider or Delegate*



*A Provider may designate a delegate to enter the SLR on their behalf by signing the “Delegation of Authority” form. The Provider must also sign the Attestation form that is uploaded into the SLR.

Proxy

NLR

Registering at the NLR and SLR are separate processes

SLR

Create Proxy Account

Choose Provider

1) About You

Member of a group

On your own

If your Provider is applying as a member of a group, eligibility information will have been entered by the Group/Clinic Representative

2) Eligibility Info

If your Provider is applying on their own, you will need to provide information to meet eligibility

3) Certified EHR Technology

Locked After this step

4) Attestation

Provider will have to complete steps 4 and 5

5) Submit