

Addressing ACEs in a Rural County

Together we can break the cycle



Terri Fields Hosler, MPH, RD
Public Health Branch Director
Health & Human Services Agency
Shasta County



Health and Human
Services Agency

Three Types of ACEs

ABUSE



Physical



Emotional



Sexual

NEGLECT



Physical



Emotional

HOUSEHOLD DYSFUNCTION



Mental Illness



Incarcerated Relative



Mother treated violently

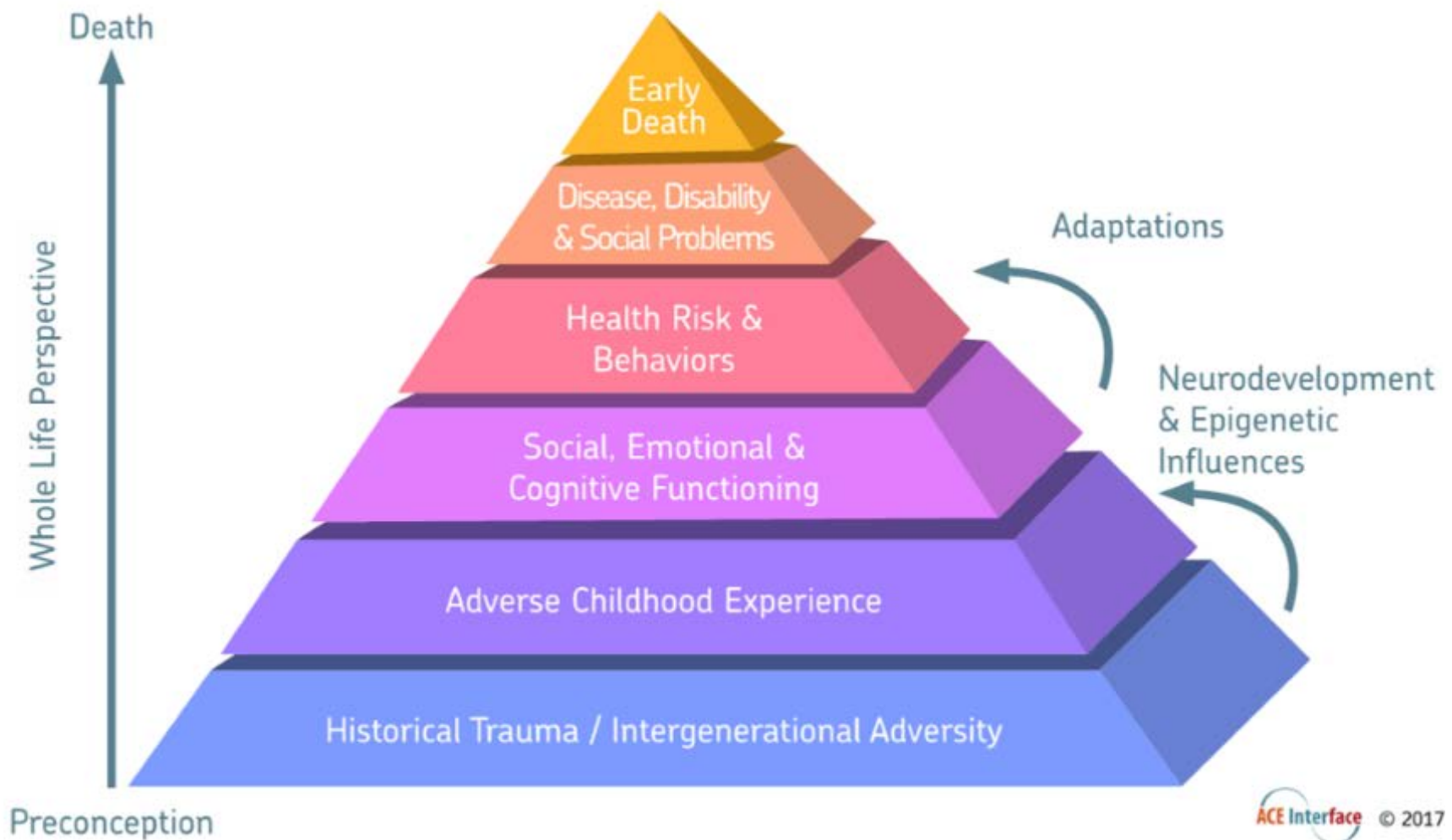


Substance Abuse

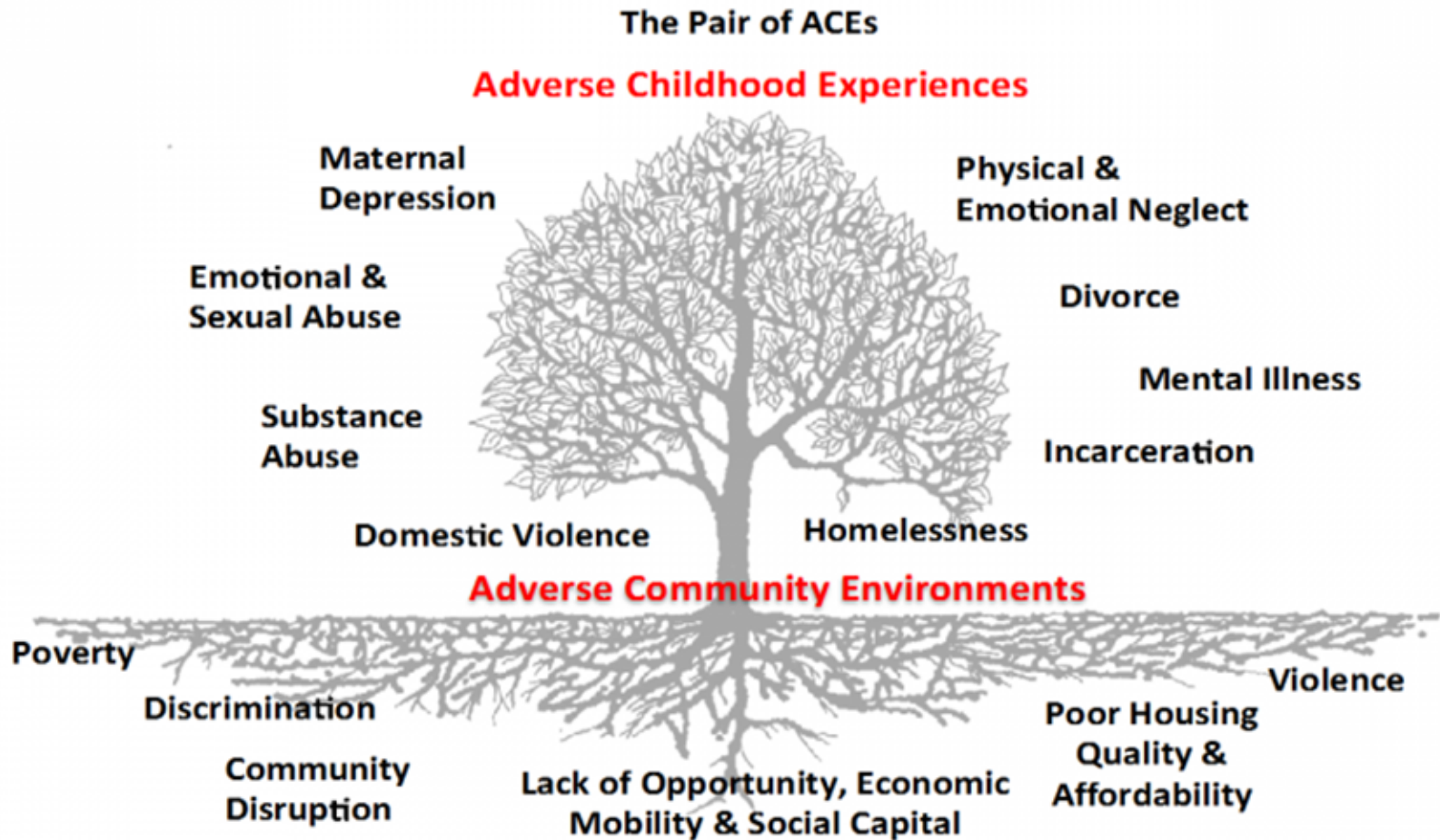


Divorce

The Influence of Adverse Childhood Experiences Throughout Life

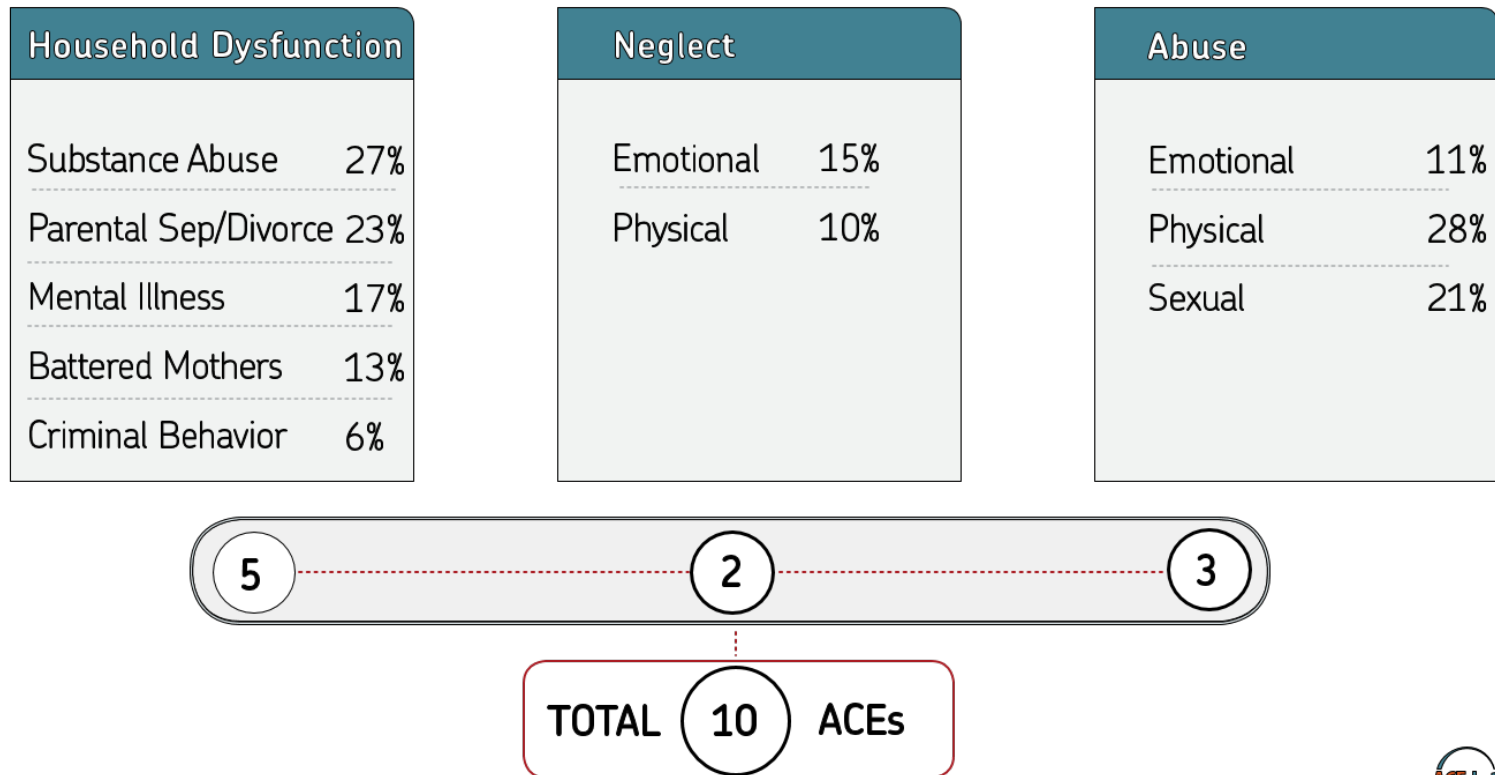


The Pair of ACEs

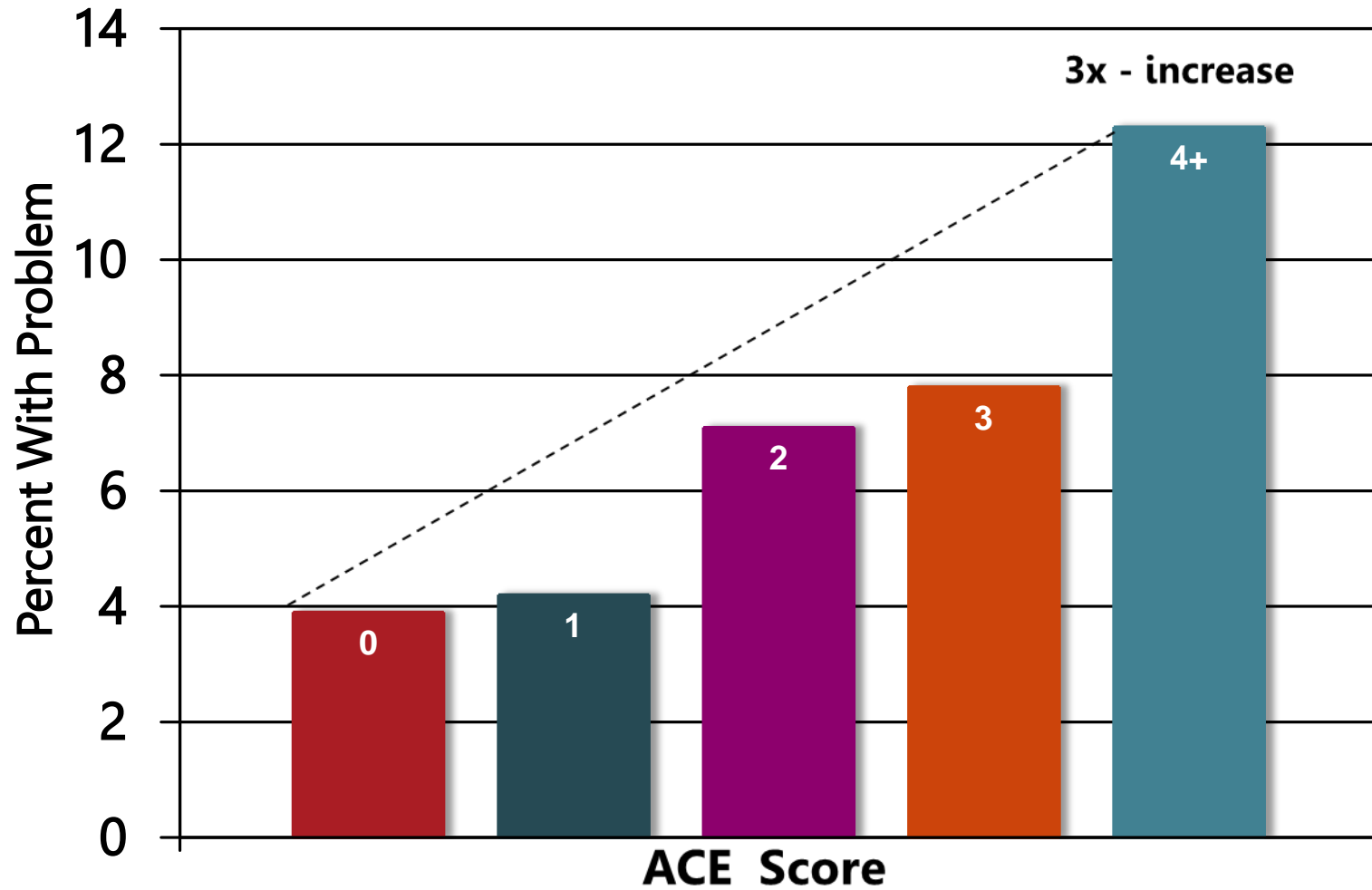


Ellis W. & Dietz W. BCR Framework. *Academic Peds* (2017).

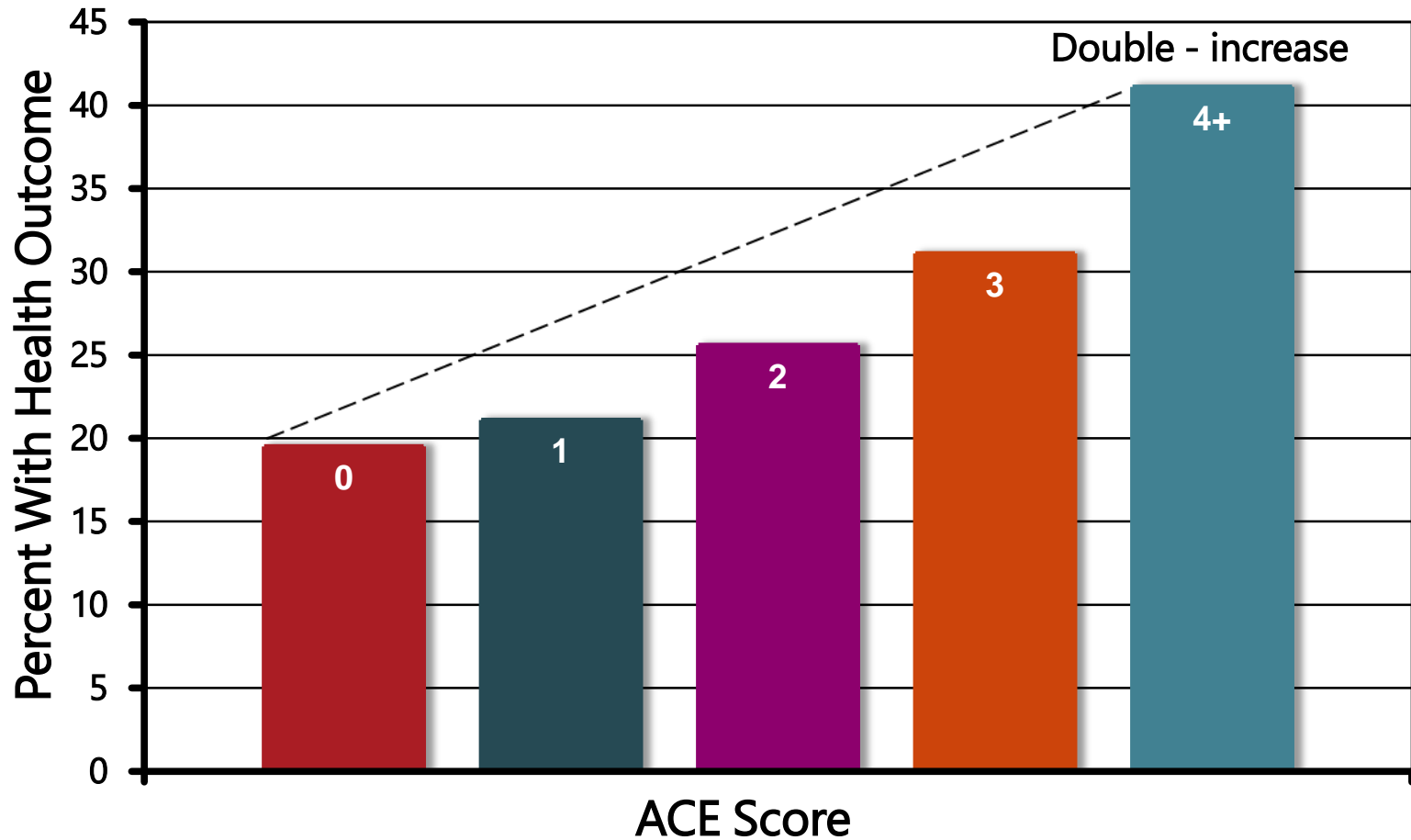
Adverse Childhood Experiences ARE COMMON



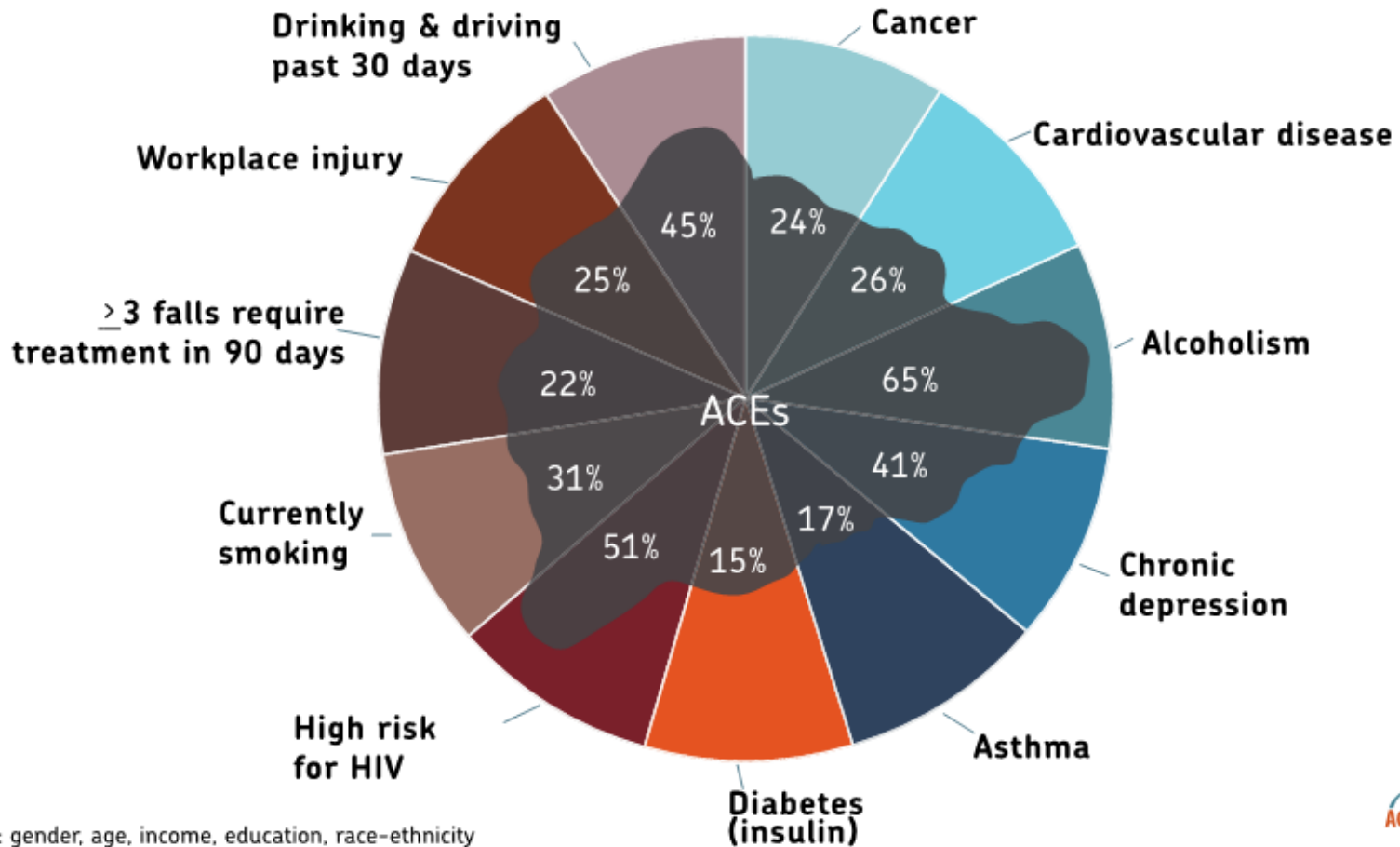
ACE Score vs Smoking



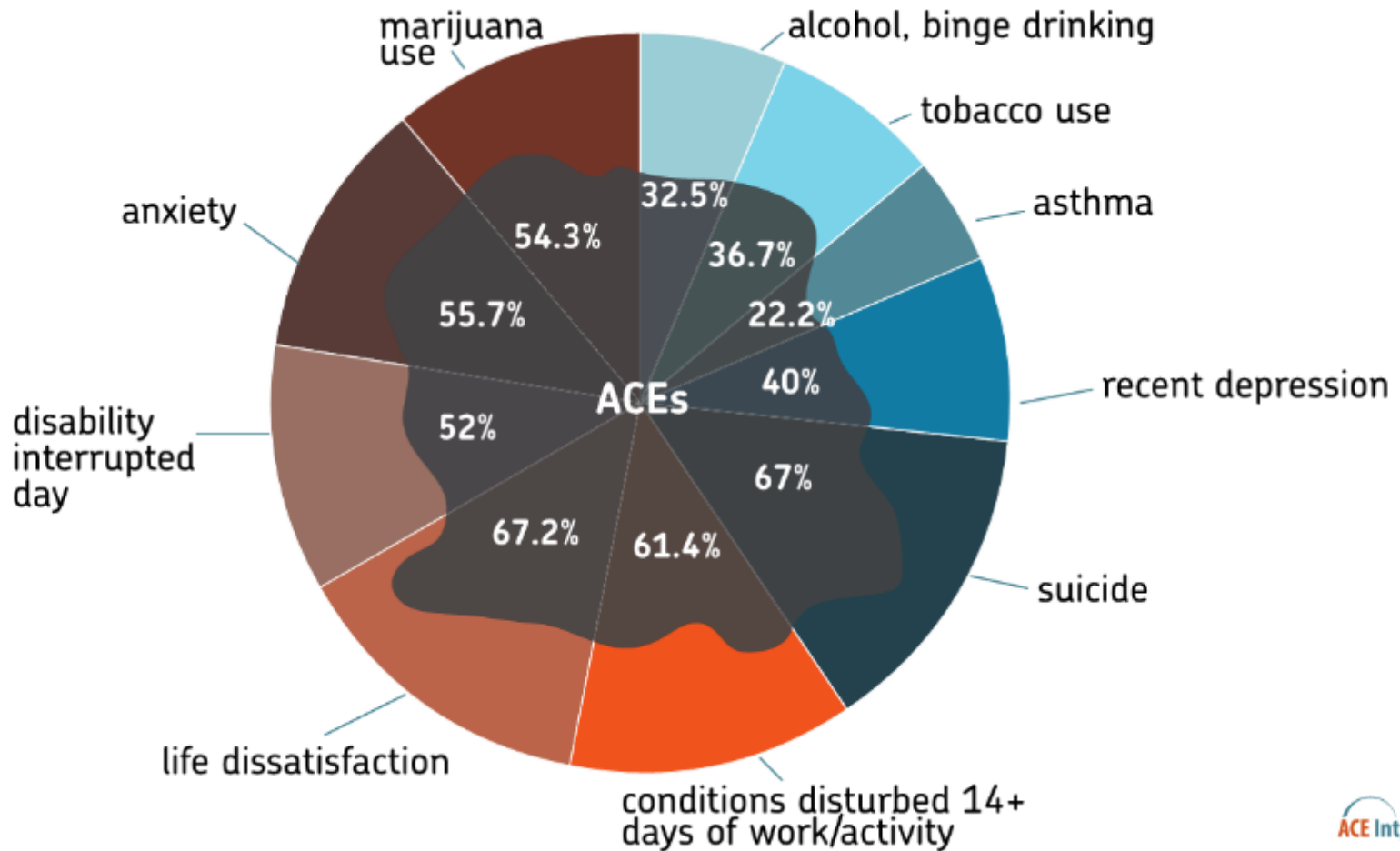
ACE Score vs Alcohol Use by age 14



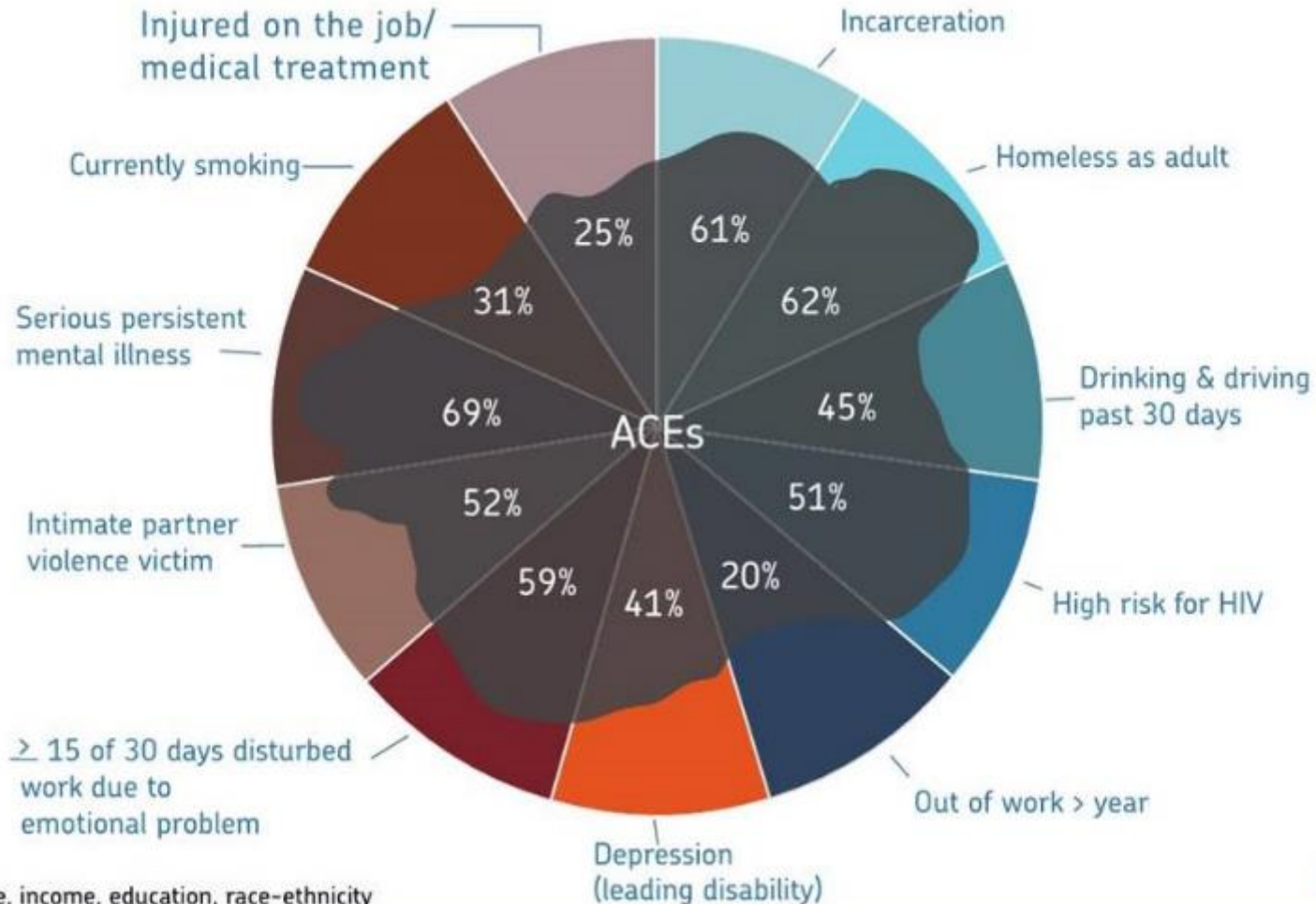
Population Attributable Risk



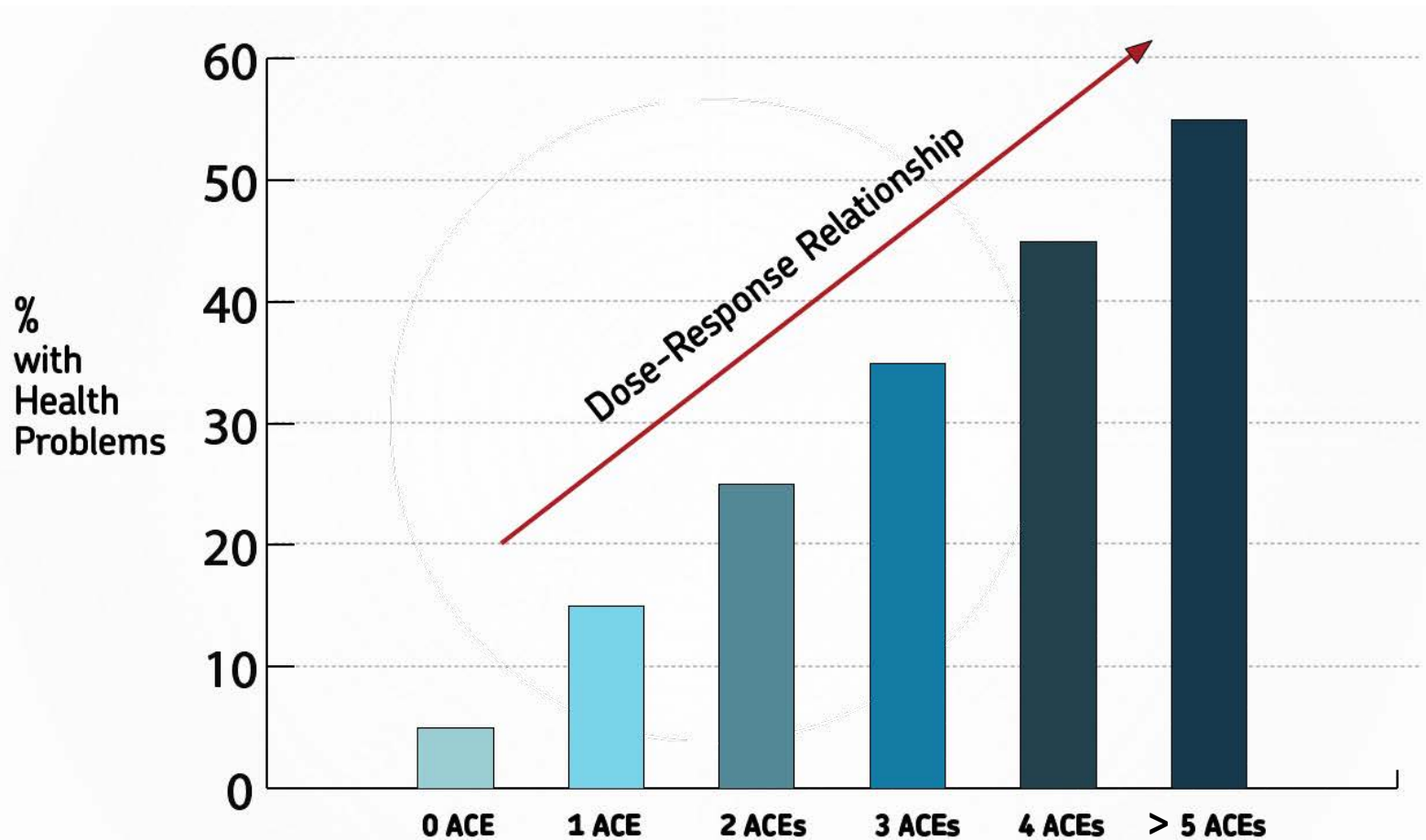
Population Attributable Risk



Population Attributable Risk



Adaptations vs Expectations

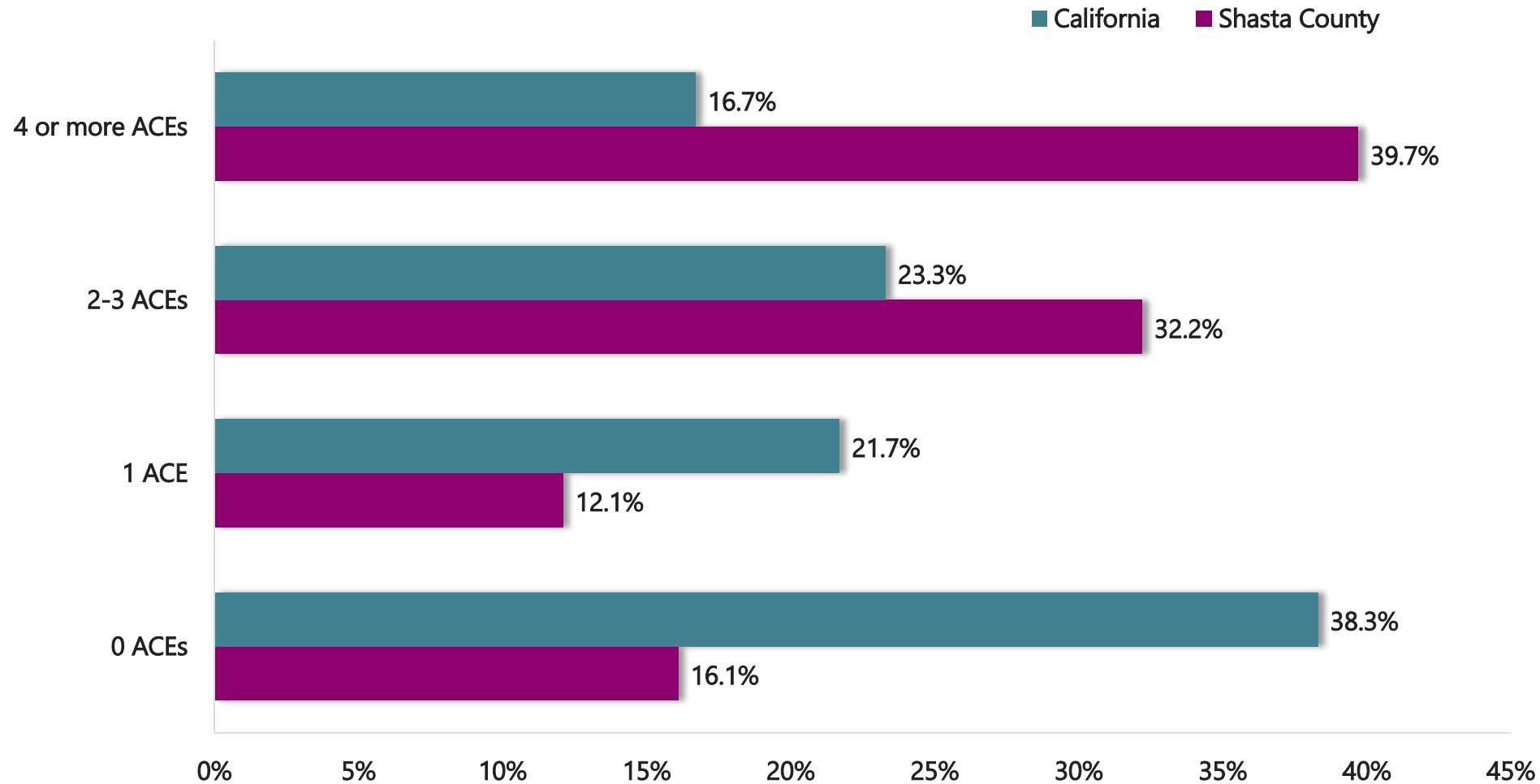


Adaptations vs Expectations

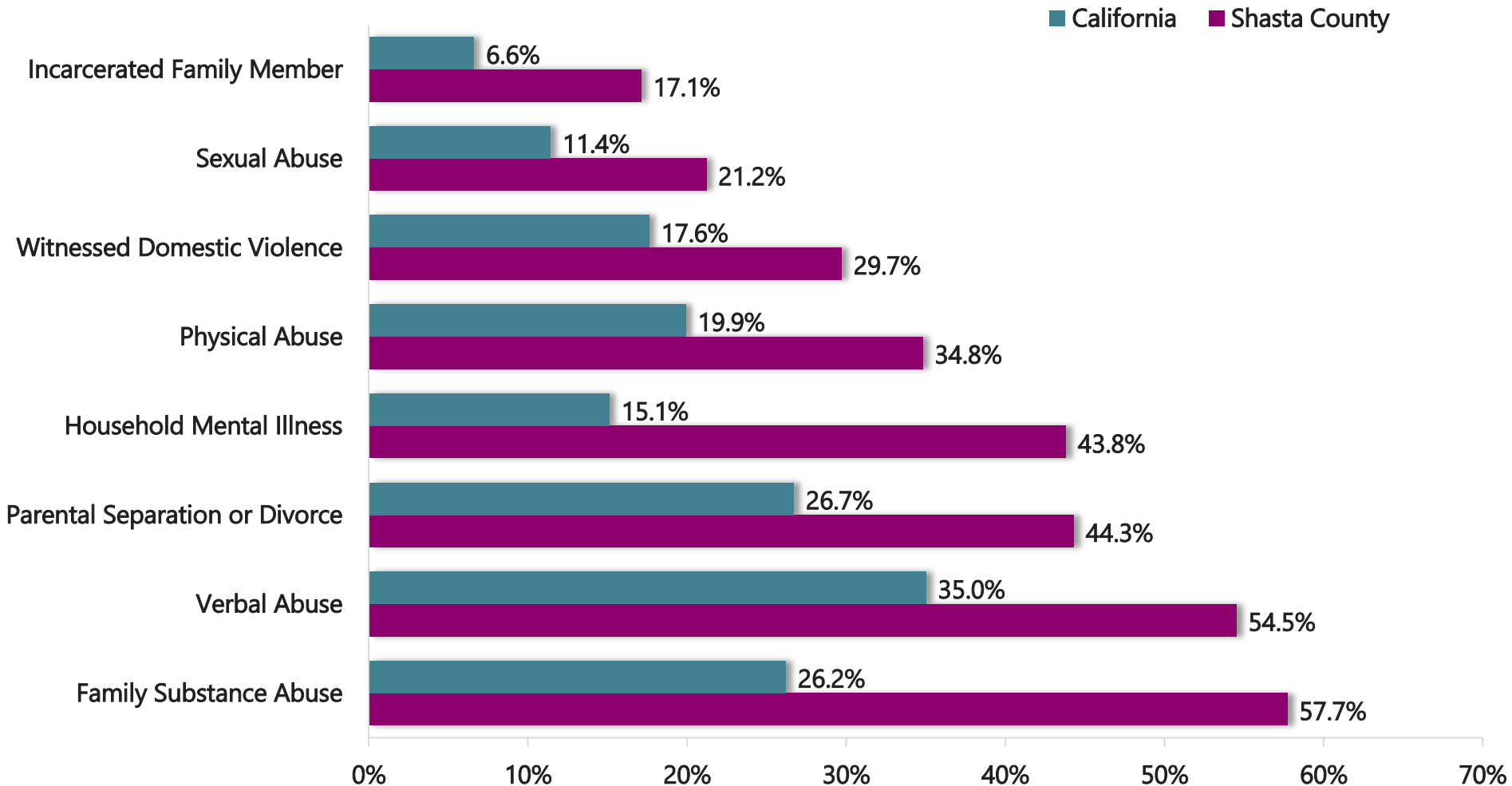
WHEN BIOLOGY
collides
WITH SOCIAL
EXPECTATIONS
we run into
TROUBLE



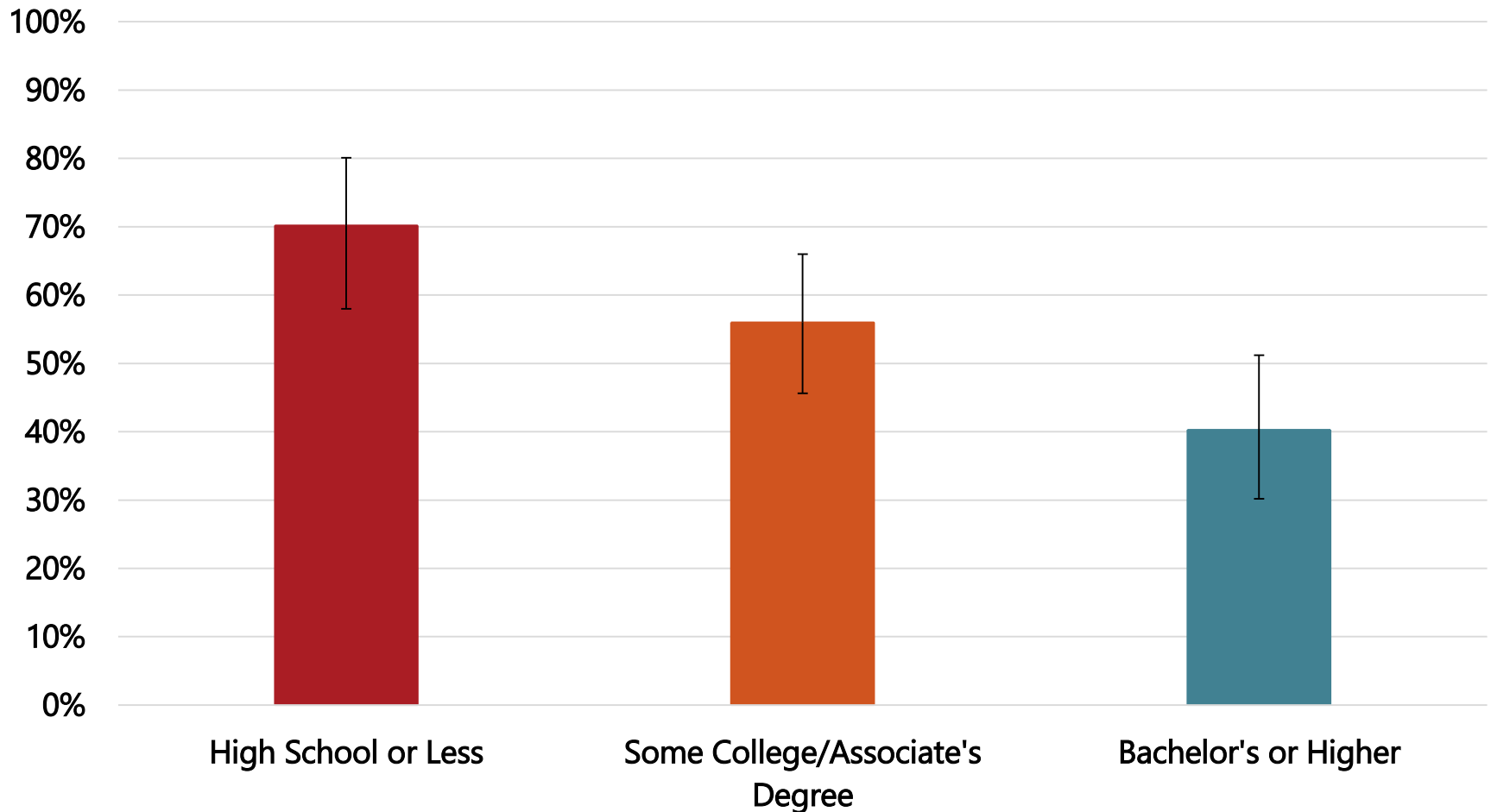
Number of Adverse Childhood Experiences Reported



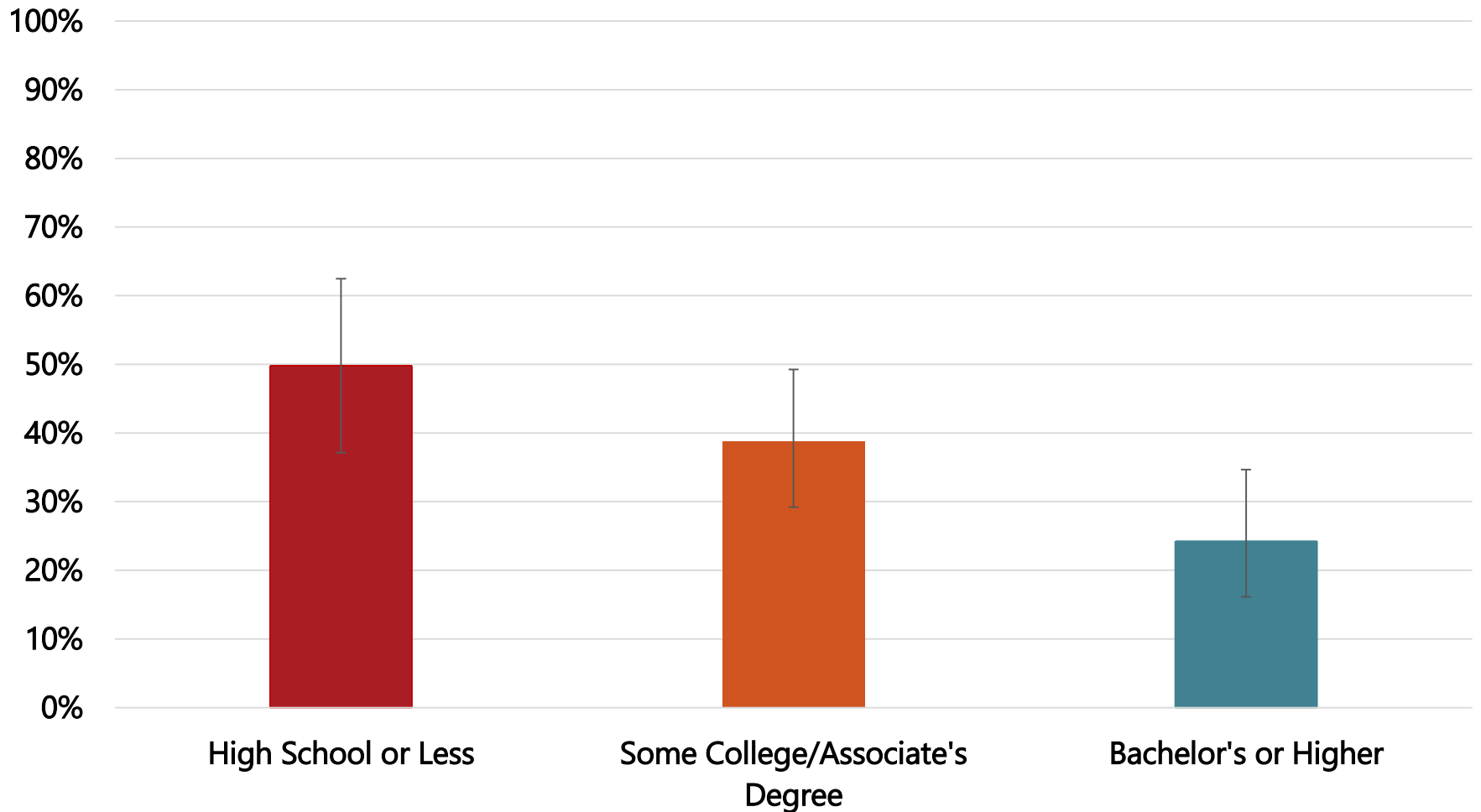
Prevalence of Adverse Childhood Experiences



Prevalence of Household Substance Abuse by Education Level, Shasta County ACE Survey, 2012



Prevalence of 4+ ACEs by Educational Attainment Level, Shasta County ACE Survey, 2012





shasta
**Strengthening
Families**
strong • safe • connected



Vision

A connected community for strong, safe families.

Mission

Strengthen families and reduce Adverse Childhood Experiences (ACEs) by increasing protective factors, coordinating service systems and engaging the community.

Strengthening Families Collaborative

Parent Cafes

Training on Strengthening Families curriculum

Assist agencies in implementing the framework into their organizations

Training on the Youth Thrive curriculum

Educating the community on Adverse Childhood Experiences



Dr. Felitti Grand Rounds at Mercy Medical Center Redding, 2014



CONTINUING MEDICAL EDUCATION

Friday Grand Rounds

Sponsored by Mercy Medical Center

In collaboration with

**Child Abuse Prevention Coordinating Council and
Shasta Strengthening Families Collaborative**



Funding is generously provided by Shasta County Health and Human Services Agency, Public Health, First5 Shasta and the Area 1 Perinatal Council.

Topic: "Adverse Childhood Experiences"

Educational Objectives: At the completion of this presentation attendees should be able to:

- Document the high prevalence of unrecognized adverse life experiences in childhood
- Illustrate their profound effect on adult health and well-being, decades later
- Discuss the significant Public Health Paradox wherein the conventional 'problem' represents an unconsciously chosen 'solution' by the individual
- Identify local community resources and how to refer patients who screen positive for ACEs

Speaker: Vincent J. Felitti, M.D.

Clinical Professor of Medicine

University of California

Co-Principal Investigator of the Adverse Childhood Experiences (ACE) Study

Date: Friday, February 28, 2014

Time: 12:15 p.m. – lunch

Location: Auditorium: A, B, & C

12:30 p.m. - presentation

The intended audience for this program is Pediatricians, Internal Medicine, Hospitalists, Family Practice, FP Residents and any other interested healthcare providers.



Partnering with the Medical Community



Dr. Terri Pettersen from Portland
September 2015

Pilot Screening Project, January 2016



Shasta Community Health Center



Hill Country Health & Wellness Center

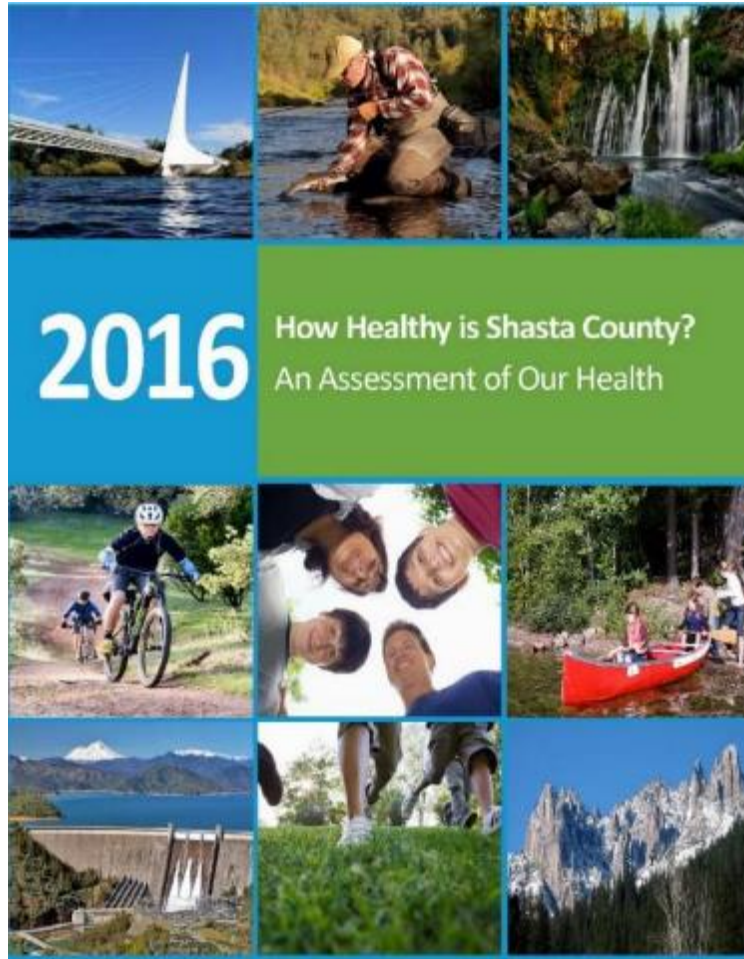


Dignity Health Northstate – Mercy Redding
Mercy OB • Mercy Family



One Safe Place

Community Health Assessment



ACEs Town Hall Forum 2017

Heard about ACEs?
Adverse Childhood Experiences



Together we can
break the cycle.

 **Strengthening Families**
strong. safe. healthy. families.

shastastrongfamilies.org

 Health and Human
Services Agency



TOWN HALL FORUM

The Impact of Adverse Childhood Experiences

WEDNESDAY
APRIL 19, 2017

4:30 PM Reception and Refreshments

5:00-7:00 PM Presentations and Audience Q&A

HOLIDAY INN
1000 Hilltop Drive
Redding

Sponsored by

 **FIRST5 SHASTA**

 Health and Human
Services Agency

 **Shasta College**

 **Strengthening Families**
strong. safe. healthy.

Find out how the experiences of childhood impact our health, behavior, and overall well-being in adulthood - for better or worse. This Town Hall Forum will explore Adverse Childhood Experiences (ACEs) and the effects they may have decades later including chronic disease, heart disease, mental illness, substance abuse, and violent behavior. ACEs impact how we parent our children and their likelihood of acquiring their own ACEs.

Join us for presentations by local experts and be part of the conversation about reducing ACEs in Shasta County adults and children.

PANELISTS

ACES Impact & Shasta County - Andrew W. Deckert, M.D., M.P.H.
Shasta County Health and Human Services Agency, Public Health Branch

ACES in Medical Settings - Patty Sand, M.D., M.P.H.
Shasta Community Health Center

Helping Families With ACEs - Dianna Wagner, M.S., LMFT
Shasta County Health and Human Services Agency, Children's Services Branch

ACES Impact on Education - Tom Arnelino & Kelly Rizzo
Shasta County Office of Education

STRENGTHENING FAMILIES
The Shasta Strengthening Families Collaborative aspires to make Shasta County the best place to raise a family. It's growing group of committed partners are working to support strong, safe families. Raising awareness about ACEs and how to address them by building Protective Factors in families is the collaborative's focus. Learn more about Strengthening Families at this Town Hall Forum.

WANT TO ATTEND?
It's FREE to register.
Click now to [RESERVE YOUR SPOT!](#)

First 5 Shasta
390 Park Marina Circle
Redding, CA 96001
Phone: 530-646-3780
info@first5shasta.org

[Join My Mailing List](#)

[Forward to a Friend](#)



Dr. Robert Anda & Laura Porter

ACE Community
Leader Luncheon
May 19, 2017



ACE Champions Training, June 2017



Annett's Story

Partnering with ACE Interface

Community
ACE Prevention
Framework

Data Dashboard
to track outcomes

ACE Interface
Master Training
and licensed
materials

Ongoing technical
support and
follow up sessions



Shasta Strengthening Families

Community ACE Prevention Framework Fall 2017



Community ACE Prevention Framework

Our Vision

A connected community for strong, safe families

Our Mission

Strengthen families and reduce Adverse Childhood Experiences (ACEs) by increasing protective factors, coordinating service systems and engaging the community.

Shasta Strengthening Families Steering Committee Strategies

Leadership
Expansion

Provide leadership and support to spheres of influence

Focus and
Communication

Coordinate community awareness campaigns

Cycles of
Learning

Support a common language through ACE Interface trainings

Results and
Outcomes

Develop and monitor community indicators



Tell Everyone You Know

Work Within Your Sphere of Influence

Shasta County ACE Data Dashboard Indicators, October 2017

1. Kindergarten Assessment/Self-Regulation
2. Third Grade Reading Levels
3. 911 Calls for Intimate Partner Violence
4. Sexual Assault in Adults
5. Abuse and/or Neglect in Children
6. Harmful Substance Use by Adults
7. Drug-affected Babies at Delivery
8. Substance Use by Children
9. Psychiatric Hospitalization/ER visits for Adults and Children
10. Offenders Who Successfully Complete Probation
11. Chronic Disease: Heart Disease



**2017-
2022**

**Community Health
Improvement Plan
Shasta County**



Strategic Plan

SHASTA COUNTY HEALTH AND HUMAN SERVICES AGENCY
PUBLIC HEALTH BRANCH
2018 - 2020



Terri Fields Hosler, MPH, RD, Branch Director
HEALTH & HUMAN SERVICES AGENCY, PUBLIC HEALTH BRANCH

APRIL 2018



ACEs Town Hall Forum 2018

**FILM SCREENING
& TOWN HALL**
Thursday, May 17 · 6-8 pm
Cascade Theater · Redding, CA

[Click Here To Register For Our Free Event](#)

FILE: 00070-1
Vol: 2
Pgs: 15 / 500
ID: 37

00000004
00070-2
00000000



RESILIENCE
THE BIOLOGY OF STRESS & THE SCIENCE OF HOPE

fig1


[Click Here To Watch The Trailer](#)

RESILIENCE uncovers how toxic stress can affect the brains and bodies of children, putting them at a greater risk for disease, homelessness, incarceration, and early death. Learn how to join the movement to build resilience and break the generational cycle of Adverse Childhood Experiences (ACEs) in Shasta County.




  Health and Human Services Agency  Strengthening Families
stronger - safer - connected


Adverse Childhood Experiences
(ACEs)

**Together we can
Build Resilience
and Promote Hope**

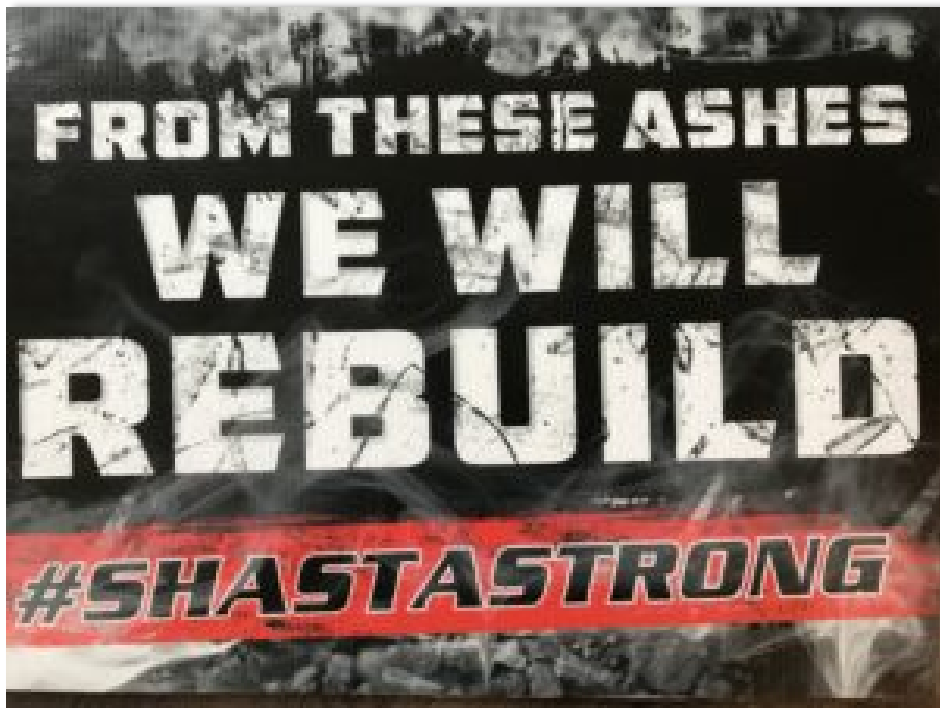


shastastrongfamilies.org

 Health and Human Services Agency  Strengthening Families
stronger - safer - connected  FIRST5
SHASTA

 @ShastaStrongFamilies

Carr Fire, July 2018



Adapting trainings to include community trauma



Laura Porter training on resiliency



Meta-leadership expansion



Launch mental wellbeing initiatives

CHANGE is up to US



It is shaped by our thoughts, our conversations, the way we relate with one another in relationships, in families, and in communities.

