

Coverage Ambassador Webinar

Webinar Tips

- » If you experience technical difficulties, try leaving and rejoining the webinar. If the issue persists, please private message the host for assistance.
- » Closed captioning is available via WebEx. To enable it, click the "CC" icon on the left side of your screen.
- » During the Q&A, please use the "Raise Hand" feature to ask you question. If possible, turn on your camera to make the session more interactive.
- » For better focus on the presenter, switch to "Speaker View" in WebEx.
- » For questions or comments, email: Ambassadors@dhcs.ca.gov.



Children and Youth Behavioral Health Initiative (CYBHI) Update

Autumn Boylan, Deputy Director, Office of Strategic Partnerships

How Does the CYBHI Fee Schedule Work?



Fee Schedule Service Provision

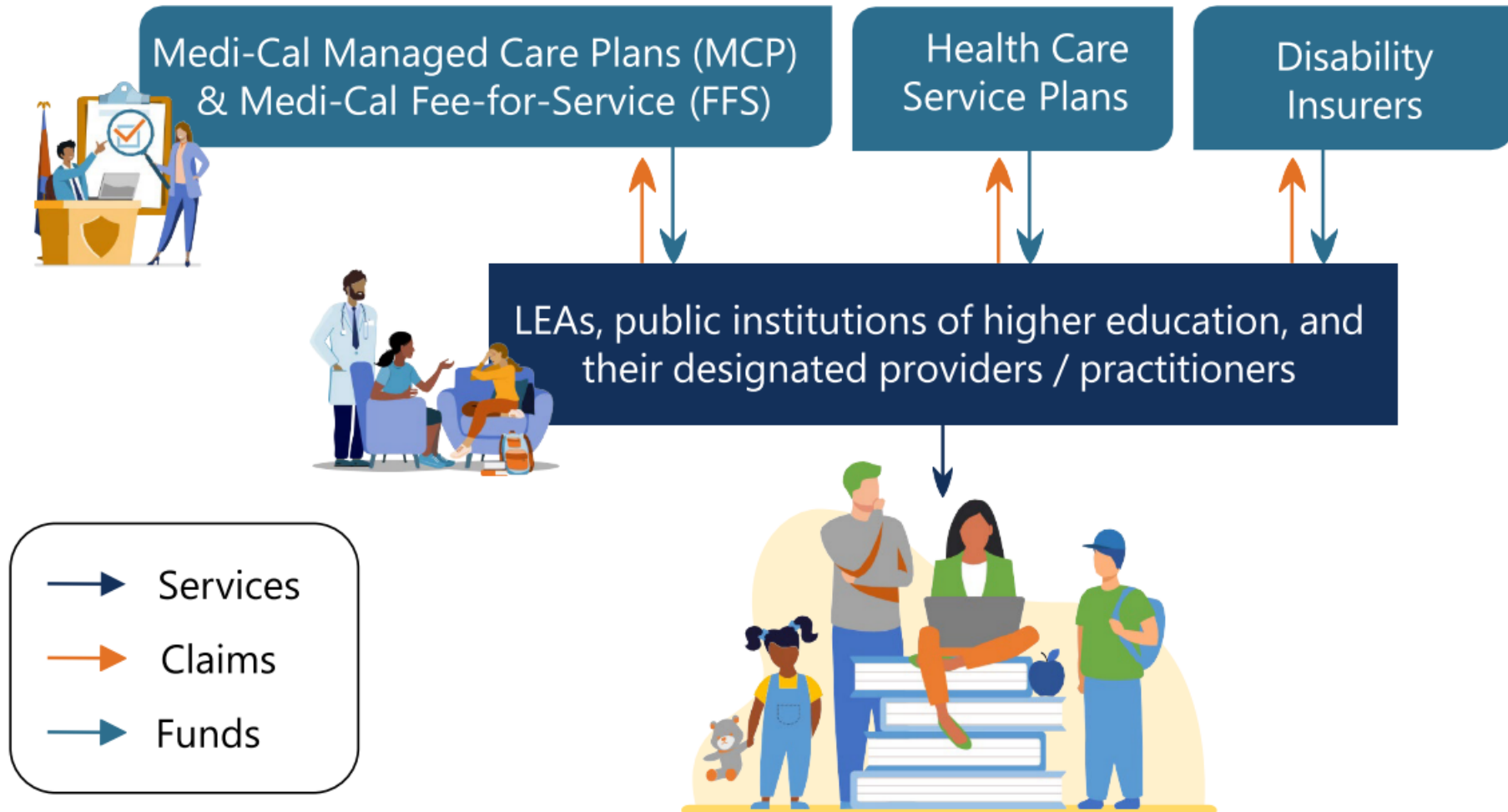


Local Educational Agencies (LEA), public institutions of higher education, and their designated providers/practitioners furnish services to students.

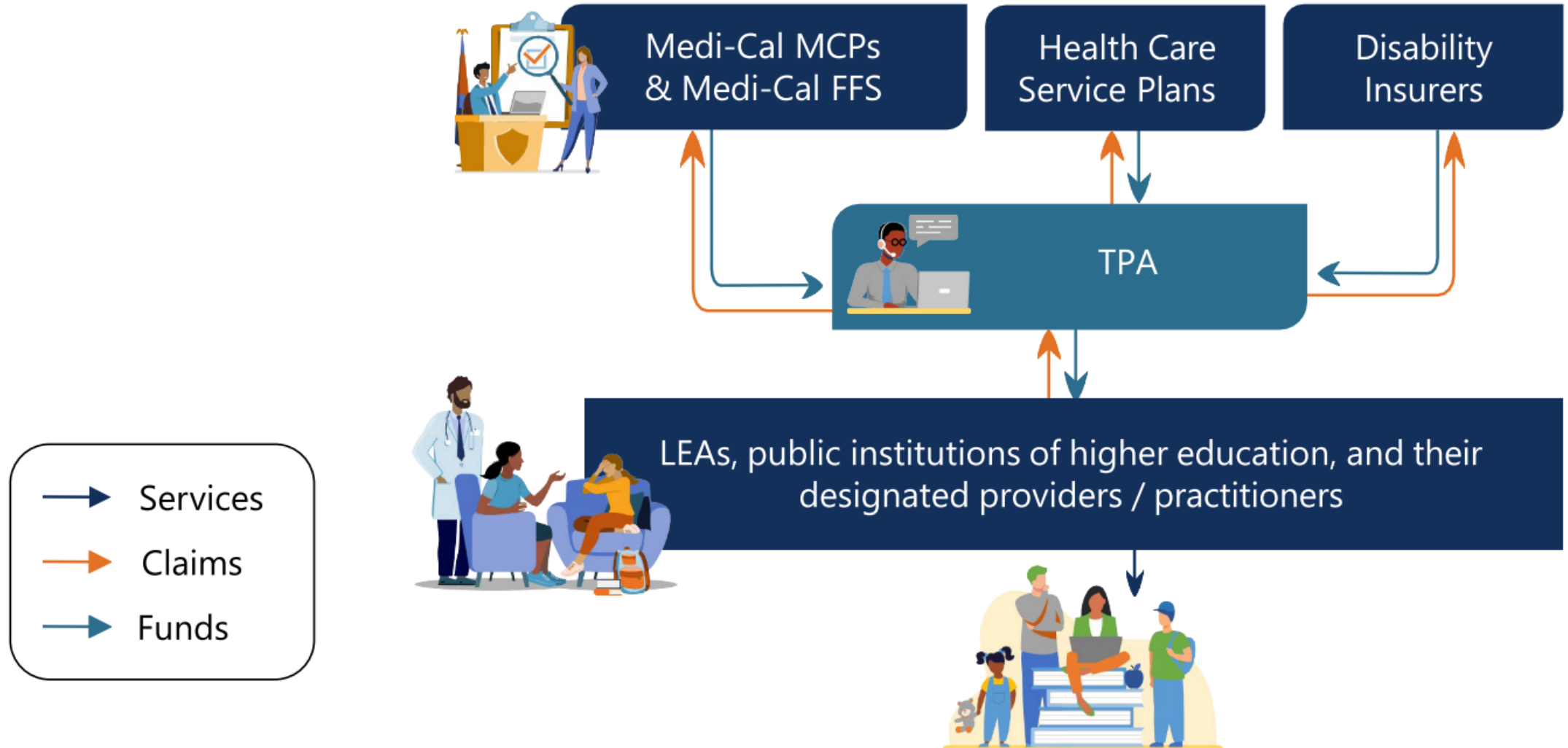


→ Services

Coverage of Fee Schedule Services



Statewide Third-Party Administrator (TPA) to Oversee Provider Network and Manage Claims



Covered Plan Types and Eligible Members

Eligible for Fee Schedule Program Reimbursement

- » Medi-Cal FFS
- » Medi-Cal MCPs
- » Health Care Service Plans (Knox-Keene)
- » Disability Insurers

NOT Eligible for Fee Schedule Program Reimbursement

- » Special Education – Individualized Education Plan (IEP)
- » High-Deductible Health Plans (if deductible not met)
- » Federal Plans (Employee Retirement Income Security Act of 1974 (ERISA))
- » Self-Insured Plans
- » Medi-Cal Share of Cost (SOC) (if no SOC met)
- » County Behavioral Health (BH) Services (i.e., Specialty Mental Health Services (SMHS), Drug Medi-Cal (DMC), and DMC Organized Delivery System (ODS))

CYBHI Fee Schedule

Service categories included in the fee schedule



Psychoeducation



Treatment



Screening and
Assessment



Coordination of Care

Please see this [PDF](#) for additional details for certain services, with respective codes, fees, and provider types.

Fee Schedule-Eligible Provider Types

- » Alcohol and Other Drug Counselor
- » Associate Marriage and Family Therapist
- » Associate Professional Clinical Counselor
- » Associate Social Worker
- » Community Health Worker
- » Educational Psychologist
- » Licensed Clinical Social Worker
- » Licensed Marriage and Family Therapist
- » Licensed Professional Clinical Counselor
- » Doctor (physician or psychiatrist)
- » Nurse Practitioner
- » Medical Assistant
- » Student Personnel Services (PPS) School Counselor ¹
- » PPS School Psychologist Worker
- » School Social Worker ¹
- » Psychologist
- » Registered Nurse
- » Wellness Coach ²

^{1, 2} Pending approval of State Plan Amendment.

What Parents/Caretakers Must Know

- » No out-of-pocket costs for families.
- » Health plans are not authorized by law to charge students and their families for services provided in schools.

- » Schools must know the student's health insurance information.
- » School districts must submit a claim for reimbursement to the health plan or insurer, so they need to know where to send the claim for reimbursement.

- » Student data and information are confidential and secure.
- » School districts and health plans must follow strict privacy and confidentiality laws and keep student data, including student services records, secure. Parents/Caretakers may be asked to sign a consent form to share data with the health plan and state.

Positive Parenting, Thriving Kids (PPTK)

- » Covering 20 topics (in English and Spanish), PPTK is a series of **FREE** videos and print resources to provide parents and caretakers with practical, evidence-based information and skills to address the most common parenting challenges. Topics include:
 - Self-Care and Parent-Child Relationships
 - Health Child and Adolescent Growth
 - Big Changes and Challenges
 - Family and Community Stress
- » Created through a partnership with [The Child Mind Institute](#)



0 – 12 years

BrightLife Kids, a CalHOPE program by Brightline, provides **free behavioral health coaching** to all California kids ages 0–12. **No costs attached. No insurance required. No referrals needed.**

- Private 1:1 coaching via video and secure chat
- Diverse coaches offering bilingual support
- On-demand digital resources
- Care guides to manage complex needs and provide referrals



13 – 25 years

Soluna, a CalHOPE program by Kooth, is the **all-in-one mental health app** for California youth and young adults to destress, reset, and seek support. **Always free. Always anonymous.**

- Live 1:1 coaching sessions via video, phone, and secure chat
- Diverse, bilingual coaches
- Interactive tools and resources
- Moderated community forum



**Ask your questions in
the chat.**

Justice-Involved Reentry Initiative

Justice-Involved Reentry Initiative Goals



Increase coverage, continuity of coverage, and service uptake through the assessment of eligibility and availability of coverage for benefits in carceral settings prior to release



Improve access to services prior to release and **improve transitions and continuity of care** into the community upon release



Provide behavioral health intervention and use medications for stabilization and addiction treatment for substance use disorders (SUD), with the goal of reducing decompensation, suicide-related deaths, overdoses, and overdose-related deaths in the near-term post-release



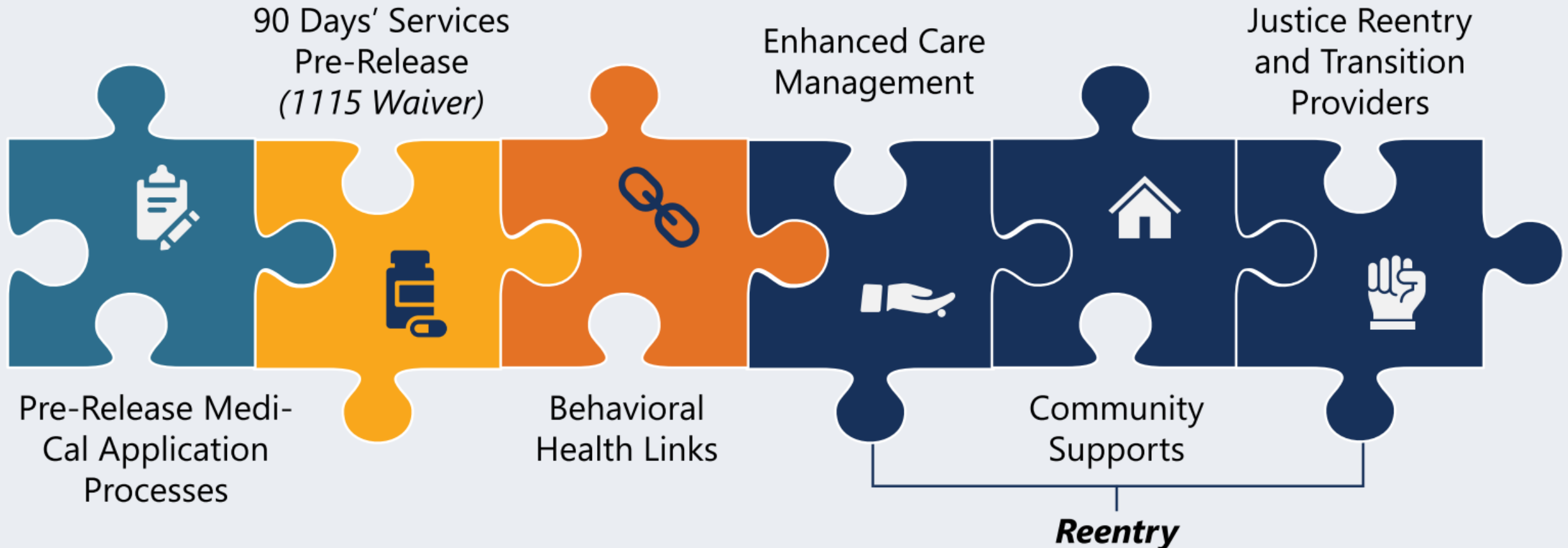
Improve coordination and communication between correctional systems, Medicaid and Children's Health Insurance Program (CHIP) systems, managed care plans, and community-based providers



Reduce post-release acute care utilizations, such as emergency department (ED) visits and inpatient hospitalizations and all-cause deaths through robust pre-release identification, stabilization, and management of serious physical and behavioral health conditions with increased receipt of preventive and routine physical and behavioral health care

The CalAIM Reentry Initiative is Comprised of Pre-Release and Reentry Components

Initiatives Include:



Eligibility Criteria for Pre-Release Services

Incarcerated individuals must meet the following criteria to receive in-reach services:

- ✓ Be part of a Medi-Cal or CHIP Eligibility Group, and
- ✓ Meet one of the following health care need criteria:
 - Mental Illness
 - SUD
 - Chronic Condition/Significant Clinical Condition
 - Intellectual or Developmental Disability (I/DD)
 - Traumatic Brain Injury
 - Human Immunodeficiency Virus/Acquired Immunodeficiency (HIV/AIDS)
 - Pregnant or Postpartum

Note: All Medi-Cal/CHIP eligible youth are eligible to receive pre-release services and do not need to demonstrate a health care need if they are:

- Incarcerated at a youth correctional facility.
- Under 21 and incarcerated at an adult jail.
- Former foster youth under 26 and incarcerated at an adult jail.

Covered Pre-Release Services

- » Reentry **care management** services.
- » **Physical and behavioral health clinical consultation** services provided through telehealth or in-person, as needed, to diagnose health conditions, provide treatment, as appropriate, and support pre-release case managers' development of a post-release treatment plan and discharge planning.
- » **Laboratory and radiology** services.
- » **Medications and medication administration.**
- » **Medication Assisted Treatment/medications for addiction treatment (MAT)**, for all Food and Drug Administration-approved medications, including coverage for counseling.
- » Services provided by **community health workers** with lived experience.
- » **Covered outpatient prescribed medications and over-the-counter drugs** (a minimum 30-day supply as clinically appropriate, consistent with the approved Medicaid State Plan).
- » **Durable medical equipment (DME)** upon release, consistent with approved State Plan coverage authority and policy.

Enhanced Care Management (ECM)

ECM is a Medi-Cal benefit to support comprehensive care management for members with complex needs. Individuals who are eligible for pre-release services will be eligible to receive ECM under the Individuals Transitioning from Incarceration Population of Focus.

Seven ECM Core Services:

- » Outreach and Engagement
- » Comprehensive Assessment and Care Management Plan
- » Enhanced Coordination of Care
- » Member and Family Supports
- » Health Promotion
- » Comprehensive Transitional Care
- » Coordination of and Referral to Community and Social Support Services

Partners Involved in Reentry Service Delivery

Reentry services will be delivered by a mix of correctional and community-based providers with support from Medi-Cal managed care plans.



County and State Correctional Facilities

- » Medi-Cal Eligibility, Applications, and Suspensions
- » Pre-Release Services (e.g., pre-release care management, clinical consultation, medications, MAT)



County Behavioral Health Agencies

- » Pre-Release Behavioral Health In-Reach Services
- » Behavioral Health Links



Community Based Providers and Pharmacies

- » In-Reach Pre-Release Clinical Consultation Services
- » Pre-Release Medications and Medications Upon Release



Managed Care Plans and ECM Providers

- » Pre-Release In-Reach Care Management (under Medi-Cal fee-for-service)
- » Warm Handoffs and Post-Release ECM

Pre-Release Services Go-Live Timelines

County Jails and Youth Correctional Facilities

October 1, 2024

- Santa Clara County
- Yuba County
- Inyo County

January 31, 2025
(Pending Review)

- San Joaquin County
- San Mateo County

**California
Department of
Corrections and
Rehabilitation
will go-live
starting in
February 2025**

**Additional county
correctional
facilities will phase
in on a quarterly
basis through
October 2026**

State Prisons



**Ask your questions in
the chat.**

Upcoming 2025 Meetings



- » March 27
- » May 29
- » July 31
- » September 25
- » November 20

Thank You!

