

DMC-ODS BHIN 24-001

CalAIM Behavioral Health Technical Assistance Informational Webinar

February 1, 2024

Welcome and Introductions

» **Tori House, Health Program Specialist**

Special Projects Section, Special Medi-Cal Projects Branch,
Medi-Cal Behavioral Health – Policy Division

Meeting Overview

- » Welcome, Housekeeping, Introductions
- » Overview of Updated Guidance
- » Implementation Considerations
- » Questions and Answers

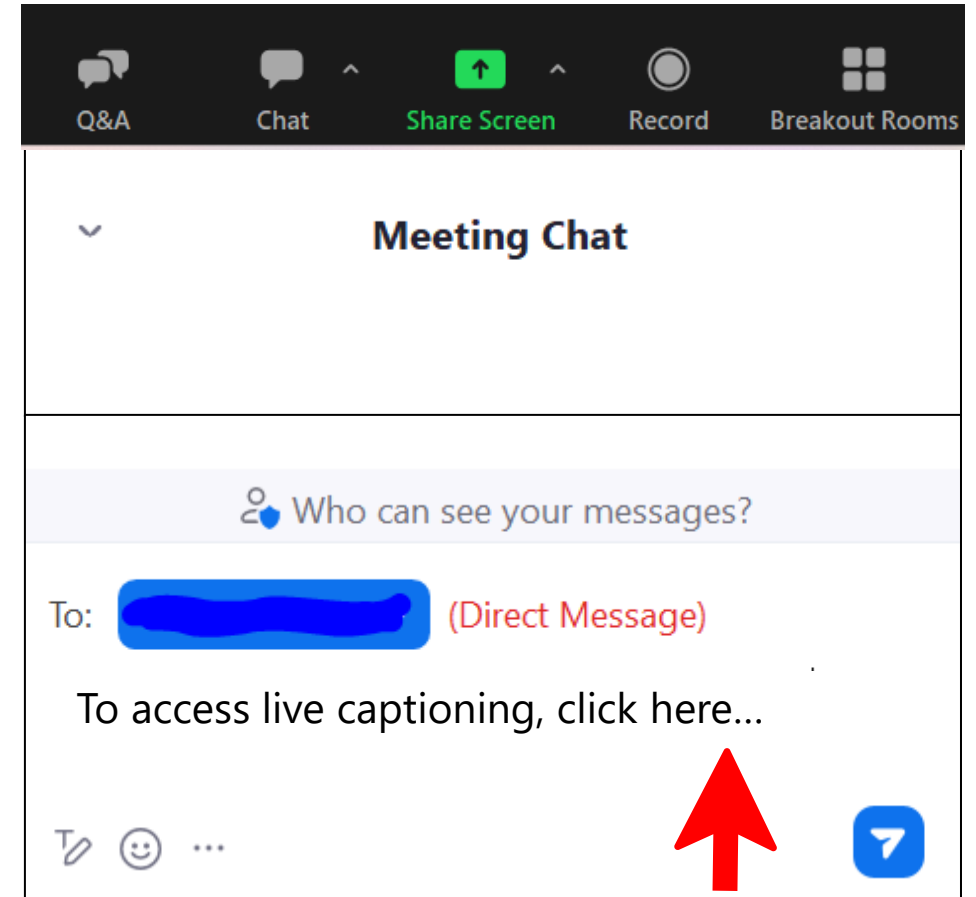


Housekeeping

- » The webinar is being recorded. A recording and an ADA accessible copy of the slides will be posted to the [DHCS CalAIM Behavioral Health webpage](#) following today's webinar.

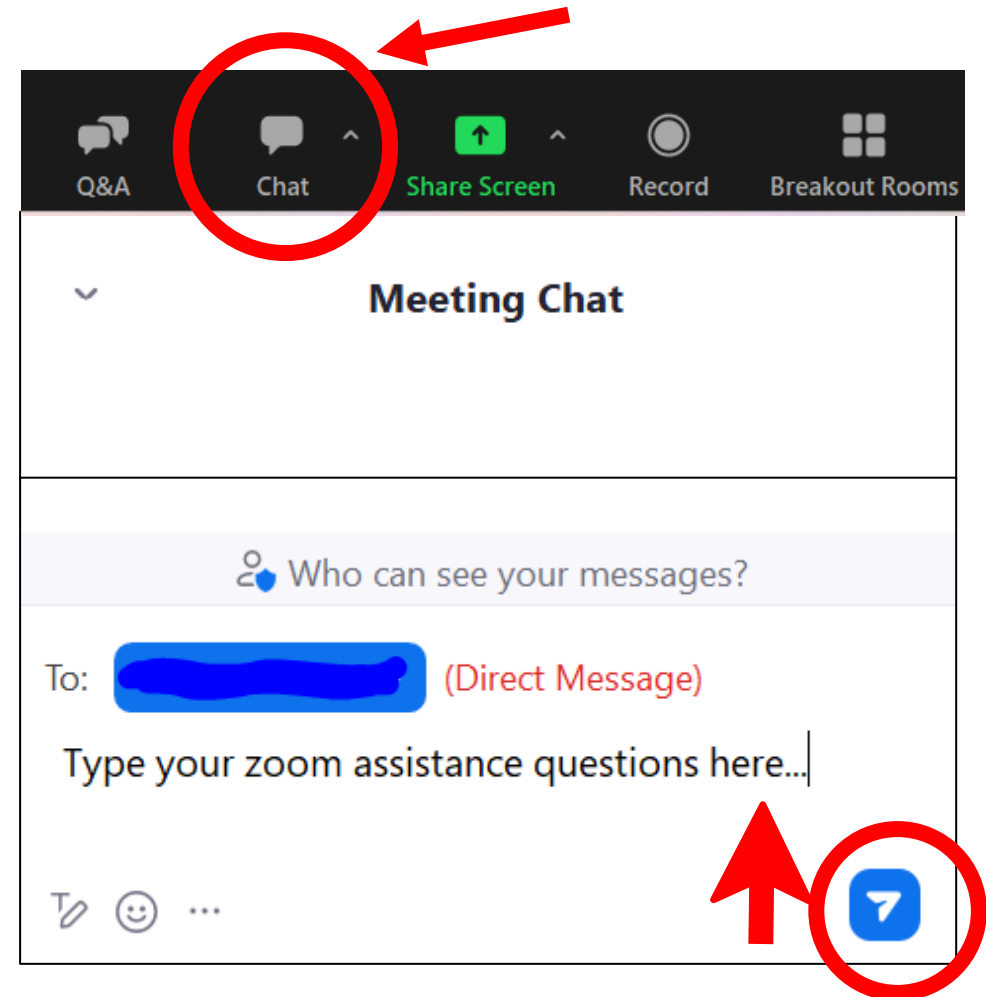
Live Captioning

- » Live captioning is available for today's webinar in English and Spanish.
 - Habrá subtítulos para la discusión de hoy en inglés y español.
- » Please click on the link in the chat to access live captioning.
 - Por favor use el enlace en el chat para acceder a los subtítulos.
- » To view live captioning, we recommend using dual screens or having the captioning pulled into a separate window alongside the webinar to view both the presentation and captioning at the same time.
 - Recomendamos usar una doble pantalla, o abrir una ventana separada para los subtítulos y así acceder también a la presentación.



Troubleshooting Zoom

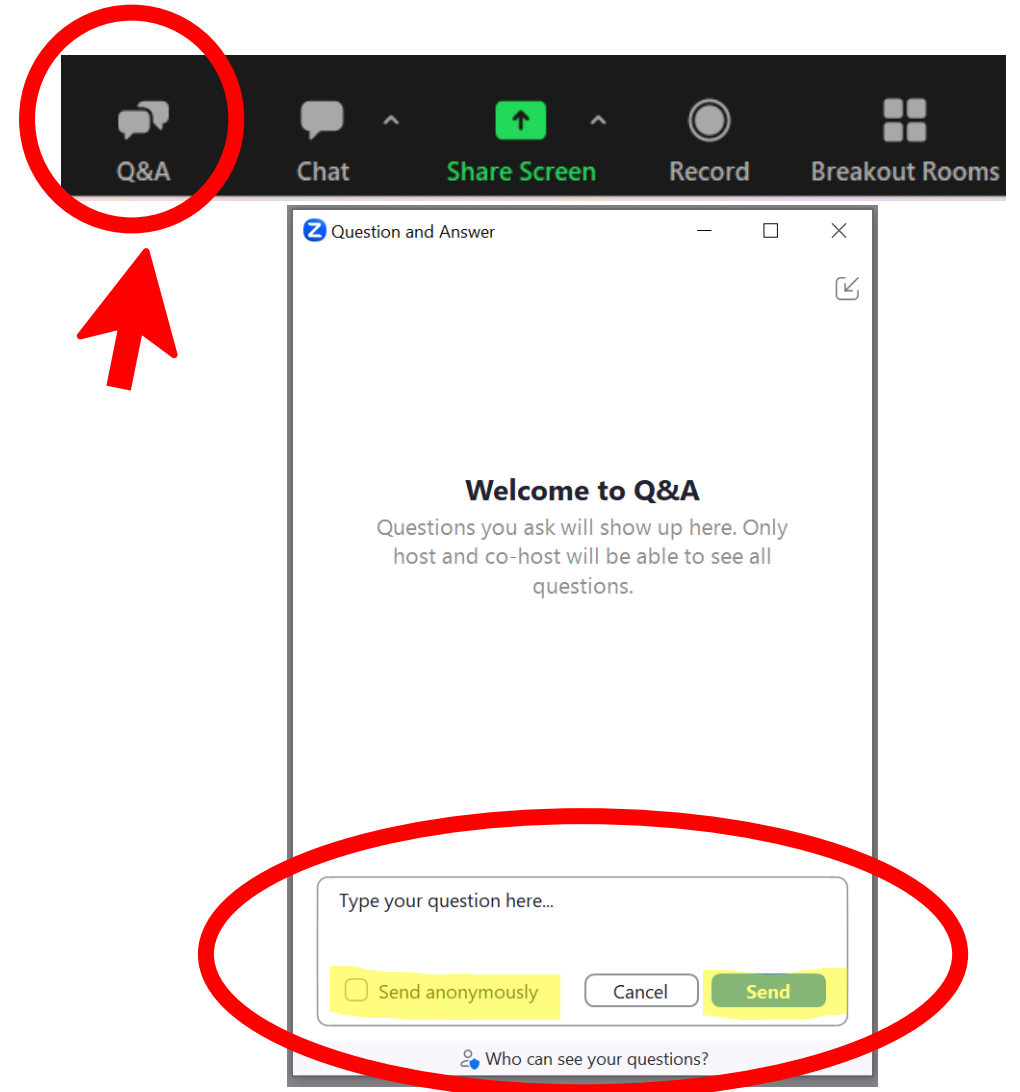
- » If you need technical assistance with the Zoom platform, please submit your question into the chat box or email annie@aurrerahealth.com during the webinar.
- Click on the chat button on the left side of your toolbar.
 - The chat box will open on the right side of your screen. Type your Zoom question there and click on the arrow on the lower right-hand side of the chat box.



Q&A Process

» If you have questions throughout the webinar, please submit them in the Q&A box, and they will be answered during the live Q&A session at the end of the webinar.

- Click the Q&A button on the left side of the toolbar.
- A chat box will pop up where you can type in your question(s). To submit, press the “send” button in the lower right-hand corner. If you wish to remain anonymous check the “send anonymously” box in the lower left-hand corner.



Overview of Updated DMC-ODS Guidance (BHIN 24-001)

BHIN 24-001 Overview

Supersedes DMC-ODS
BHIN 23-001.

BHIN 24-001 became
effective 1/1/24.

Aligns DMC-ODS with
CalAIM Behavioral Health
Policies published in 2023.
Removes guidance that is
no longer relevant.

Includes reference to
[BHIN 23-025](#), which
provides guidance for
Mobile Crisis as a required
DMC-ODS service.

Re-organizes BHIN for
improved clarity and
easier navigation.

Policy Updates: Alignment with CalAIM BH Policies

Most updates in BHIN 24-001 align DMC-ODS program requirements with new CalAIM BH guidance released in 2023.

This BHIN will be updated annually to reflect relevant policy updates that impact DMC-ODS.

Policy Updates: Alignment with CalAIM BH Policies*

**BHIN 21-032:
Updates County of
Responsibility/
Residence**

**BHIN 23-068:
Updates DMC-ODS
Assessment
Guidance**

**BHIN 23-018:
Updates Telehealth
Guidance**

**BHIN 23-040:
Updates
Contingency
Management
Guidance**

**BHIN 23-054:
Updates DMC-ODS
MAT Guidance**

**BHIN 23-025: Adds
Mobile Crisis
Benefit**

**BHIN 23-059: Adds
Justice-Involved
Initiative Guidance**

**BHIN 23-017,
BHIN 23-026, and
BHIN 23-049:
Updates Payment
Reform Guidance**

**SPA 23-0026:
Updates Qualified
Providers**

*The full list of 2023 CalAIM BH guidance reflected in BHIN 24-001 is included in the Appendix of this slide deck.

BHIN 21-032: Updates County of Responsibility/Residence

- » An update to BHIN 21-032 is forthcoming.
- » Remains the same from [BHIN 23-001](#):
 - There are no changes for DMC-ODS plans.
 - BHIN 24-001 clarifies who is eligible for DMC-ODS services.

Changes in BHIN 24-001

- » Clarifies that the County of Residence is a field in the Medi-Cal Eligibility Data System (MEDS) and MEDSLITE that indicates the county where the member resides or the county where a justice-involved individual will reside in upon their release.

BHIN 23-068: Updates DMC-ODS Assessment Guidance

- » BHIN 24-001 now includes reference to DMC-ODS assessment requirements, which were promulgated through new documentation guidance published in [BHIN 23-068](#).
- » Remains the same from [BHIN 23-001](#):
 - There is no change to the requirement that licensed or certified SUD recovery or treatment programs are required to conduct evidence-based assessments for Medications for Addiction Treatment (MAT).

Changes in BHIN 24-001

- » BHIN 23-068 does not change or supersede existing requirements for DHCS Level of Care certification for providers of Residential Treatment Services or Withdrawal Management Services.*
 - » ASAM LOC assessments must be completed within 72 hours.

*More information on DHCS Level of Care Designations and Certifications can be found in [BHIN 21-001](#).

BHIN 23-018: Updates Telehealth Guidance

- » BHIN 24-001 updates its *Covered DMC-ODS Services* section to align with [BHIN 23-018](#)'s telehealth requirements.
- » Remains the same from [BHIN 23-001](#):
 - Telehealth requirements have not changed from BHIN 23-001.

Changes in BHIN 24-001

- » BHIN 24-001 summarizes telehealth requirements and references BHIN 23-018 for additional guidance.
- » BHIN 23-001 repeated telehealth requirements within each Service description, and BHIN 24-001 now streamlines this language.

BHIN 23-040: Updates Contingency Management Guidance

- » BHIN 24-001 adds reference to [BHIN 23-040](#), which updates guidance for the optional DMC-ODS contingency management benefit.
- » Remains the same from [BHIN 23-001](#):
 - Contingency management remains an optional benefit for DMC-ODS plans.

Changes in BHIN 24-001

- » BHIN 24-001 extends the timeframe for DMC-ODS plans to opt into this benefit **now to December 31, 2026.**

BHIN 23-054: Updates DMC-ODS MAT Guidance

- » BHIN 24-001 updates the language in its *DMC-ODS MAT* policy section to align requirements with [BHIN 23-054](#).
- » Remains the same from [BHIN 23-001](#):
 - DMC-ODS plans are required to directly offer or have an effective referral process for MAT.
 - The referral process must include an established relationship with a MAT provider and transportation to appointments.

Changes in BHIN 24-001

- » DMC-ODS plans “shall monitor the referral process or provision of MAT services as noted in [BHIN 23-054](#).”
- » Removes *Previous DMC-ODS MAT Policy* section.

BHIN 23-025: Adds Mobile Crisis Benefit

- » BHIN 24-001 includes a reference to the Mobile Crisis Benefit, [BHIN 23-025](#).
- » Previous DMC-ODS BHINs did not list Mobile Crisis as a required or optional DMC-ODS benefit.

Changes in BHIN 24-001

- » Includes reference to BHIN 23-025, which provides guidance for Mobile Crisis as a required covered DMC-ODS service.

BHIN 23-059: Adds Justice-Involved Initiative Guidance

- » BHIN 24-001 introduces new language to align with the Medi-Cal Justice-Involved Reentry Initiative [BHIN 23-059](#) and its [Policy and Operational Guide](#).

Changes in BHIN 24-001

- » Adds new requirements for DMC-ODS plans to align with [BHIN 23-059](#):
 - » Assist with connecting members to physical and behavioral health services up to 90 days prior to release from incarceration.
- » These requirements must be **implemented by October 1, 2024.**

BHIN 23-017, BHIN 23-026, and BHIN 23-049: Updates Payment Reform Guidance

- » BHIN 24-001 updates its *DMC-ODS Financing* section to transition DMC-ODS plans to Payment Reform's fee for service reimbursement model that went live on July 1, 2023.

Changes in BHIN 24-001

- » Removes the *January 1, 2022 through June 30, 2023* policy section.
- » Adds references to BHIN 23-026 and BHIN 23-049 for updated payment reform guidance.
- » Notes that DHCS transitioned from a cost-based to fee-for-service payment structure
- » Adds a reference to BHIN 23-017 for service rates.

BHIN 24-001: Enclosures Overview

» BHIN Enclosures

- **Enclosure 1:** Definitions
- **Enclosure 2:** ASAM Criteria Continuum of Care and the DMC-ODS Program
- **Enclosure 3:** County Implementation Plan Template
- **Enclosure 4:** Provider Appeals Process
- **Enclosure 5:** Provider Qualifications
- **Enclosures 6-8:** Readiness Review Documents
 - CMS Requirements
 - Questions
 - Document Checklist

Enclosure 5: Provider Qualifications

- » Enclosure 5 was updated to align with [SPA 23-0026](#).
- » Changes in BHIN 24-001:
 - Adds Clinical Trainees and Medical Assistants to the list of providers that are qualified to provide DMC-ODS Services.

Formatting & Re-Organization



Formatting Edits

- Added a Table of Contents for easy navigation.



Reorganized, but did not change the guidance in:

- *DMC-ODS Program Criteria for Services.*



Removed guidance from BHIN 23-001 that is no longer relevant:

- *Previous DMC-ODS MAT Policy.*
- *DMC-ODS Financing: January 1, 2022 through June 30, 2023.*
- Definitions in *Enclosure 1* that are duplicative of the California State Plan.

Implementation Considerations

Implementation Considerations: Opting into DMC-ODS

- » Prior to a county opting in to participate in DMC-ODS, the county must submit a county implementation plan to DHCS using the DMC-ODS County Implementation Plan Template included in Enclosure 3 of BHIN 24-001.
- » **NEW:** This template is due to DHCS by **July 5th** annually for an effective date of July 1st of the subsequent calendar year.
- » Counties cannot commence DMC-ODS services without a DHCS preliminary approved county implementation plan, a completed DHCS readiness review, and their provider network being certified by DHCS.

DMC-ODS County Opt-In

- » DHCS is excited to share we have two forthcoming county additions to the DMC-ODS list of counties.
- » Need to submit your IP Plan? Email MCBHOMD@dhcs.ca.gov.
- » Interested in joining DMC-ODS? Email CountySupport@dhcs.ca.gov.
- » DHCS looks forward to collaborating with you in 2024!

Implementation Considerations: Technical Assistance

- » DHCS will update the CalAIM Behavioral Health [Frequently Asked Questions](#) to address questions received from stakeholders.
- » BHIN 24-001 will be updated annually to reflect relevant CalAIM BH guidance.
- » DHCS sent two documents to support counties' implementation of BHIN 24-001:
 - Redline BHIN 24-001
 - BHIN 24-001 Crosswalk
 - These documents show the changes made from BHIN 23-001 to BHIN.
- » If you have questions related to BHIN 24-001, please email BHCalAIM@dhcs.ca.gov.

Stakeholder Questions

- » For facilities with DHCS Level of Care Designations, how do assessment requirements differ for Residential Treatment and Withdrawal Management (WM)? For WM clients, is a full ASAM assessment required within 72 hours?
 - **For Residential Treatment:** each member shall receive a multidimensional level of care assessment within 72 hours of admission to ensure that they have been admitted to the right level of care. This assessment does not need to meet the comprehensive ASAM assessment requirements outlined in [BHIN 23-068](#).
 - **For WM:** [BHIN 21-001 Exhibit A](#) states “A resident receiving detoxification services upon admission is exempt from the multidimensional assessment, if completion of a pre-assessment within 72 hours following admission for detoxification services occurs and there are contingency plans to transfer the resident to a subsequent level of care where a full assessment would be conducted.”

Additional Resources

- » CalAIM BH [Webpage](#)
- » DMC-ODS [Webpage](#)
- » CalAIM BH Frequently Asked Questions [Webpage](#)
- » DMC-ODS Billing Manual [DHCS MedCCC Library](#)
- » DMC-ODS [Billing Manual](#)

Questions & Answers

Please submit additional questions following the webinar to:

BHCalAIM@dhcs.ca.gov

Subject line: "DMC-ODS Webinar – February 2024"

Thank you!



Appendix

Updated 2023 CalAIM Policies

- » [BHIN 23-003](#): Extended Deadlines for Medi-Cal Peer Support Specialist Grandparenting and Implementation of Medi-Cal Peer Support Specialist Certification Program Curriculum
- » [BHIN 23-006](#): Ongoing Monitoring Activities Process for Mental Health Plans (MHP) and Drug Medi-Cal Organized Delivery System (DMC-ODS) Counties
- » [BHIN 23-010](#): Revised Peer Support Service Function Code
- » [BHIN 23-012](#): Medi-Cal Peer Support Specialist Certification Fee Schedule Requirements and DHCS Approval Process
- » [BHIN 23-017](#): Specialty Mental Health Services and Drug Medi-Cal Services Rates
- » [BHIN 23-018](#): Updated Telehealth Guidance for SMHS and SUD Treatment Services in Medi-Cal
- » [BHIN 23-025](#): Medi-Cal Mobile Crisis Services Benefit Implementation
- » [BHIN 23-026](#): County Behavioral Health Intergovernmental Transfers (IGT)

Updated 2023 CalAIM Policies

- » [BHIN 23-040](#): Updated Guidance for the Recovery Incentives Program: Contingency Management Benefit
- » [BHIN 23-041](#): 2023 Network Certification Requirements for County Mental Health Plans (MHPs) and Drug Medi-Cal Organized Delivery System (DMCODS) Plans
- » [BHIN 23-048](#): Annual Update – Mental Health Plan and Drug Medi-Cal Organized Delivery System Beneficiary Handbook Requirements and Templates
- » [BHIN 23-049](#): Administrative and Utilization Review/Quality Assurance (UR/QA) Reimbursement Under Payment Reform
- » [BHIN 23-054](#): MAT Services Requirements for Licensed and/or Certified SUD Recovery or Treatment Facilities
- » [BHIN 23-057](#): Memorandum of Understanding Requirements for Medi-Cal Managed Care Plans and DMC-ODS Counties
- » [BHIN 23-059](#): Medi-Cal Justice-Involved Reentry Initiative-Related State Guidance Released
- » [BHIN 23-064](#): Naloxone Use, Funding Sources, and Best Practices
- » [BHIN 23-068](#): Documentation Requirements for all SMHS, DMC, and DMC-ODS Services
- » [SPA 23-0026](#): Updates Qualified Providers