

DEPARTMENT OF HEALTH SERVICES

714/744 P STREET
SACRAMENTO, CA 95814

March 7, 1985

TO: All County Welfare Directors
County Administrative Officers

Letter No. 85- 13

NEW MEDS LIAISON ASSIGNMENTS

This is to inform you of the new Medi-Cal Eligibility Branch, Systems Unit, MEDS Liaison county assignments and to brief you on the general duties of the Systems Unit. The attached list shows the names and telephone numbers of each staff person and the counties for which they are responsible. Please note the new liaison for your county and call them for any MEDS problems.

The Systems Unit is generally responsible for the MEDS and other operational functions. Except for those matters which require that you contact the Data Systems Branch directly, the Systems Unit should be your first point of contact for any eligibility/system operational matters.

In addition to primary responsibility for MEDS, Systems Unit is also responsible for the following functions:

MEDS Equipment Requests	Benefits Review Unit
MEDS Equipment Moves	<u>Ramos v. Myers</u> Process
MEDS Security	Refugee Tracking System
SSN Referral/Validation	Forms Distribution/Revision
SSI/SSP (SDX) Process	MEDS Training

While this list is not all inclusive it indicates the types of functions performed by the Systems Unit and should help you in determining when to contact that Unit.

All County Welfare Directors
County Administrative Officers

-2-

The attached organization chart shows the overall organization of the Systems Unit and its relationship to the Medi-Cal Eligibility Branch.

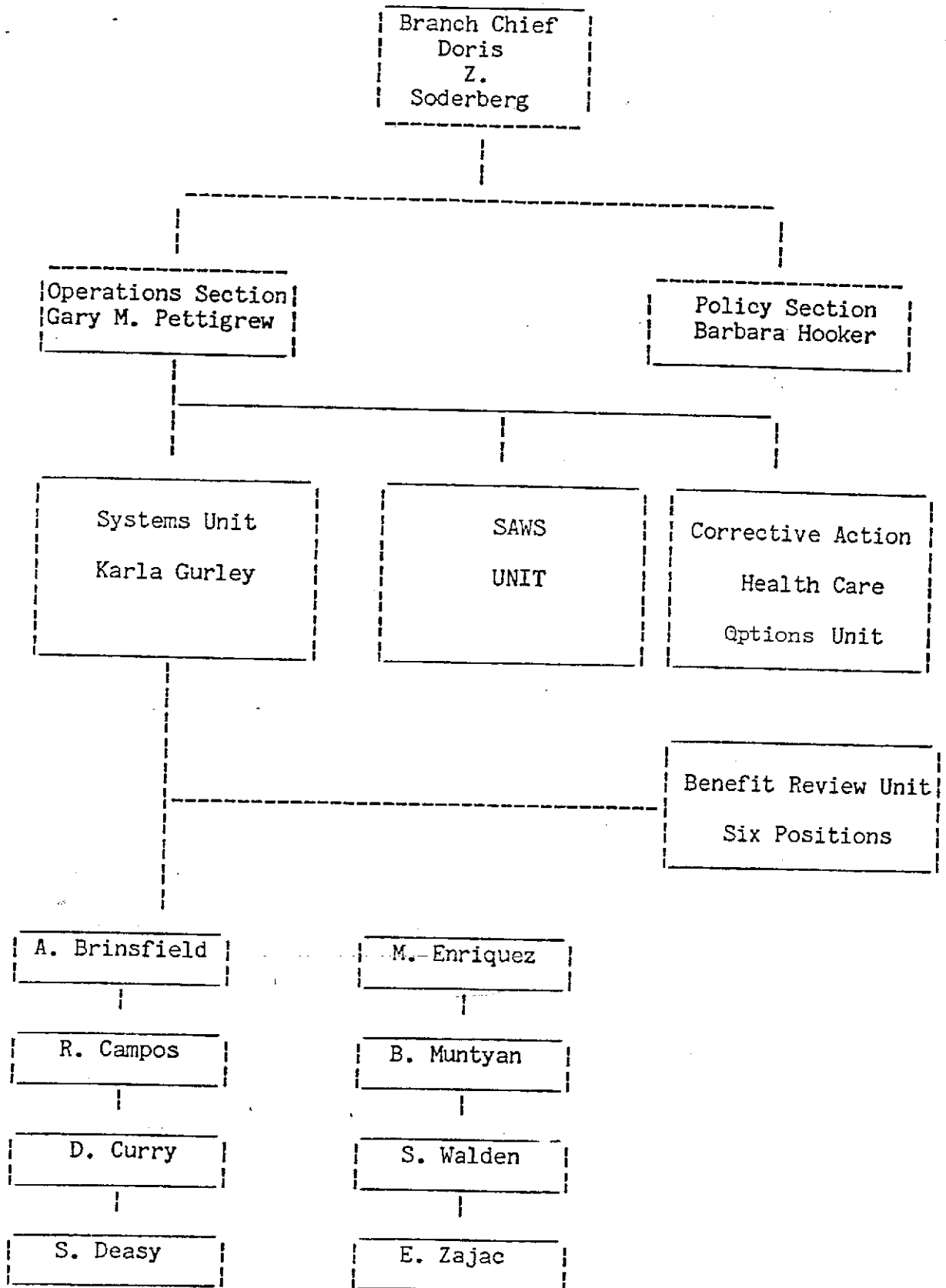
Sincerely,

Original signed by

Gary Pettigrew for
Doris Z. Soderberg, Chief
Medi-Cal Eligibility Branch

Attachment

cc: Medi-Cal Liaisons
Medi-Cal Program Consultants
MEDS Coordinators



Principal Analyst	Back-Up Analyst	County
Byron Muntyan - 324-0709	Shirley Deasy, 445-1969	San Francisco Monterey Santa Barbara Sutter Yolo Mariposa Lassen
Dahlia Curry - 322-2715	Ed Zajac - 445-2043	Los Angeles Orange San Diego San Joaquin Solano Yuba Inyo
Al Brinsfield - 322-6455	Maria Enriquez 322-4890	El Dorado Imperial Kings Mono San Bernardino Tuolumne Amador
Shirley Deasy - 445-1969	Dahlia Curry - 322-2715	Alameda Butte Colusa Glenn San Mateo Santa Cruz Ventura
Ed Zajac - 445-2043	Shirley Deasy - 445-1969	Del Norte Marin Lake Trinity Riverside Siskiyou San L. Obispo Shasta
Maria Enriquez - 322-4890	Dahlia Curry - 322-2715	Alpine Calaveras Madera Mendocino Merced Nevada Tehama Santa Clara
Sherilyn Walden 445-1799	Ed Zajac - 445-2043	Humboldt Modoc Stanislaus Napa Sierra San Benito Placer
Ron Campos 322-4890	Maria Enriquez 322-4890	Contra Costa Sonoma Kern Sacramento Tulare Plumas Fresno