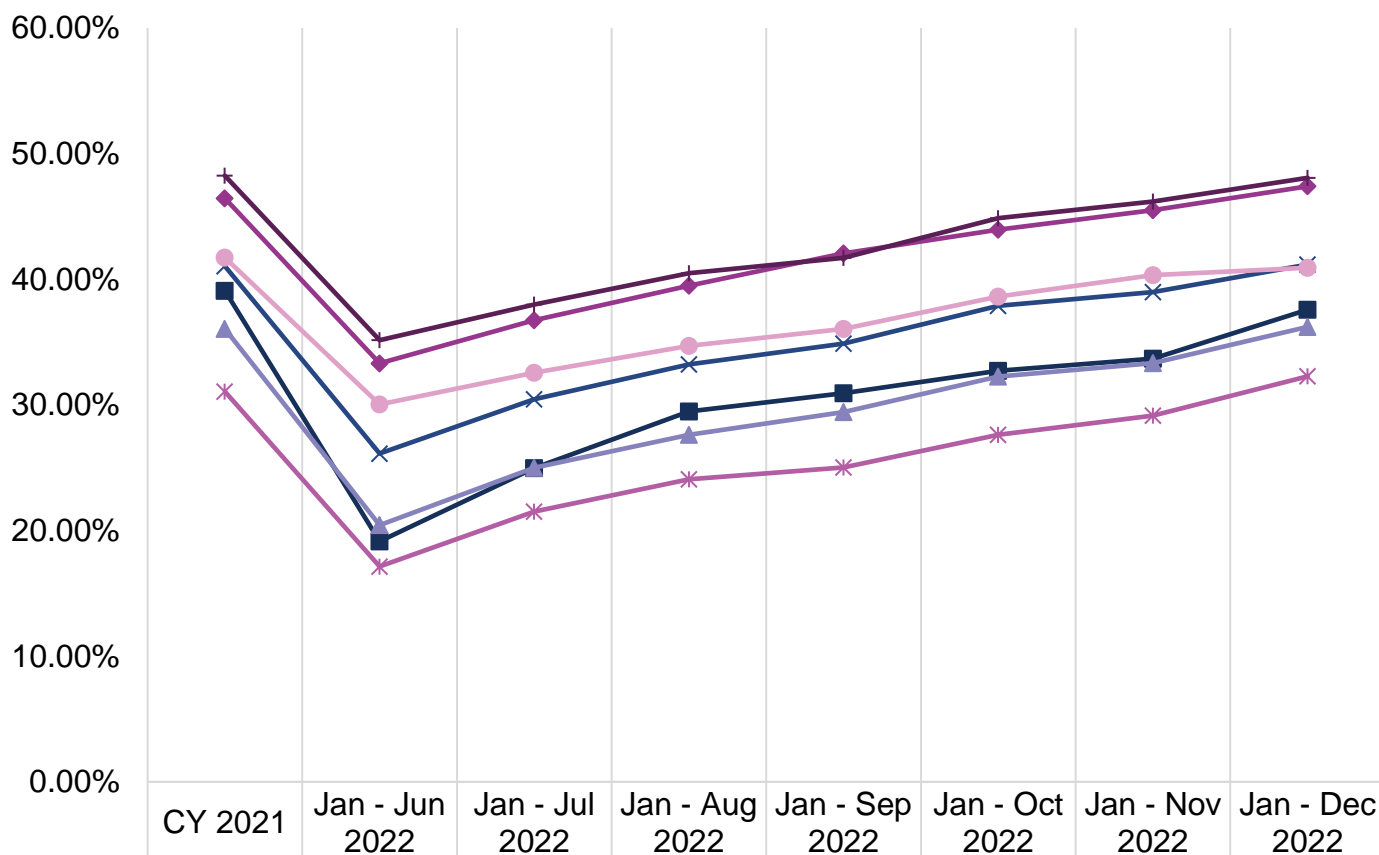


**Dental Utilization in Children Ages 0-20**

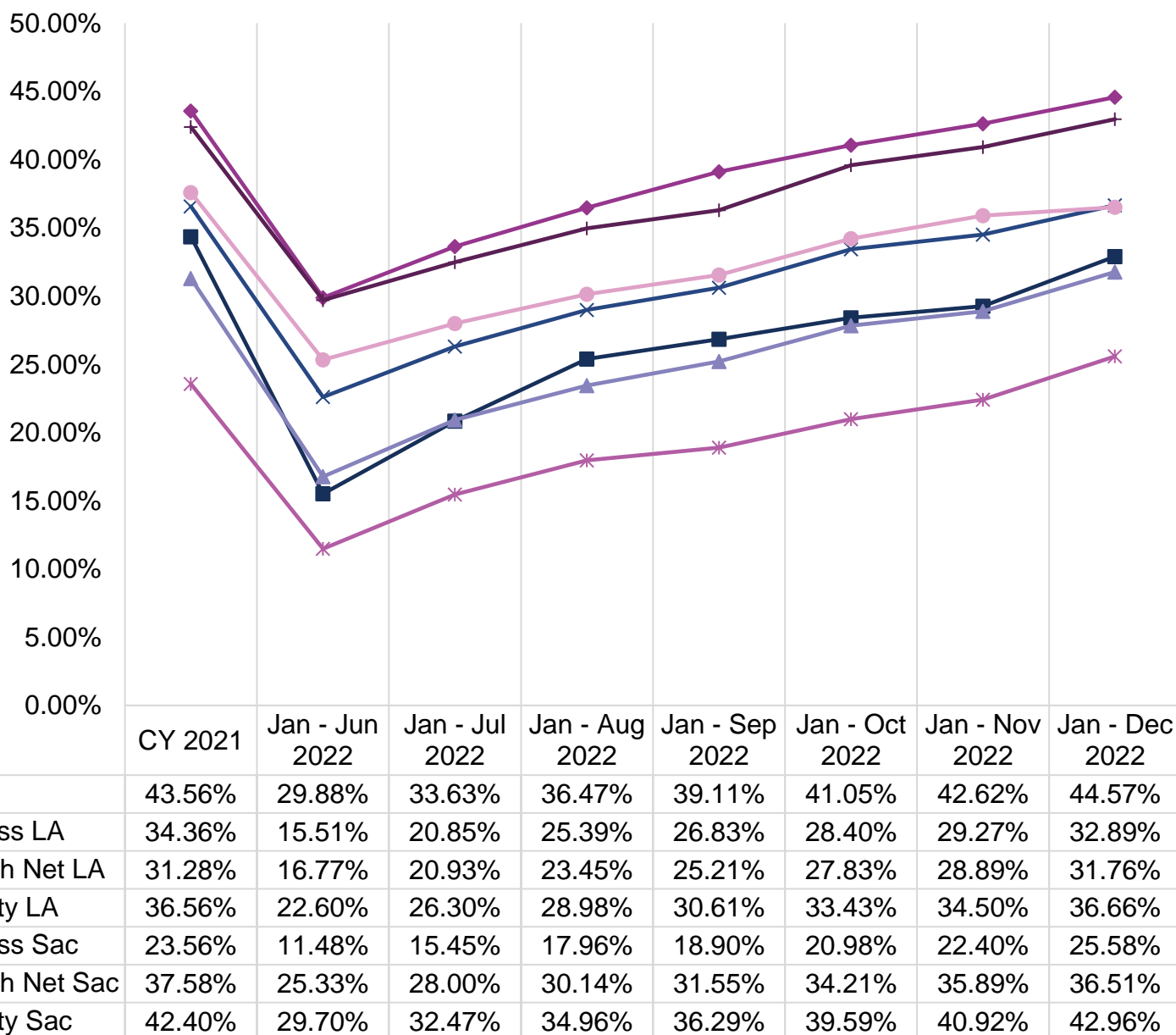
**Annual Dental Visits**



**Utilization is calculated based on:**

- **Numerator:** Number of members in the denominator who received any dental service (Current Dental Terminology (CDT) D0100-D9999 or Current Procedural Terminology (CPT) 99188), including dental encounters at safety net clinics (SNCs).
- **Denominator:** Number of members with at least 90 days continuous enrollment in the same plan during the measurement period.
- Note that CY 2023 data will be updated in May 2023 update to allow the claims run-out and calculating the number of members with at least 90 days continuous enrollment in CY 2023.

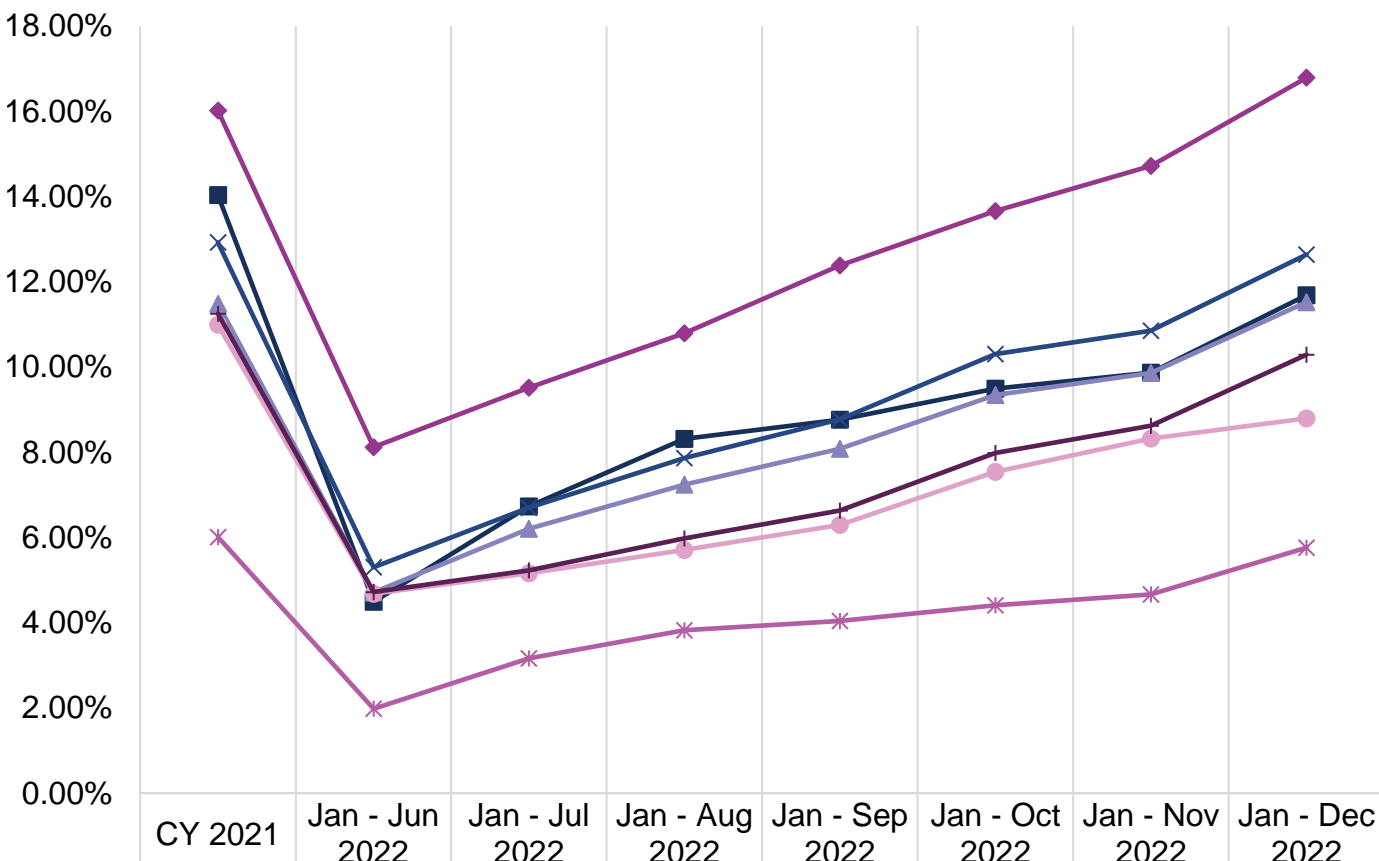
### Preventive Services



**Utilization is calculated based on:**

- **Numerator:** Number of members in the denominator who received any preventive dental service (CDT D1000-D1999 or CPT Code 99188), including dental encounters at SNCs.
- **Denominator:** Number of members with at least 90 days continuous enrollment in the same plan during the measurement period.
- Note that CY 2023 data will be updated in May 2023 update to allow the claims run-out and calculating the number of members with at least 90 days continuous enrollment in CY 2023.

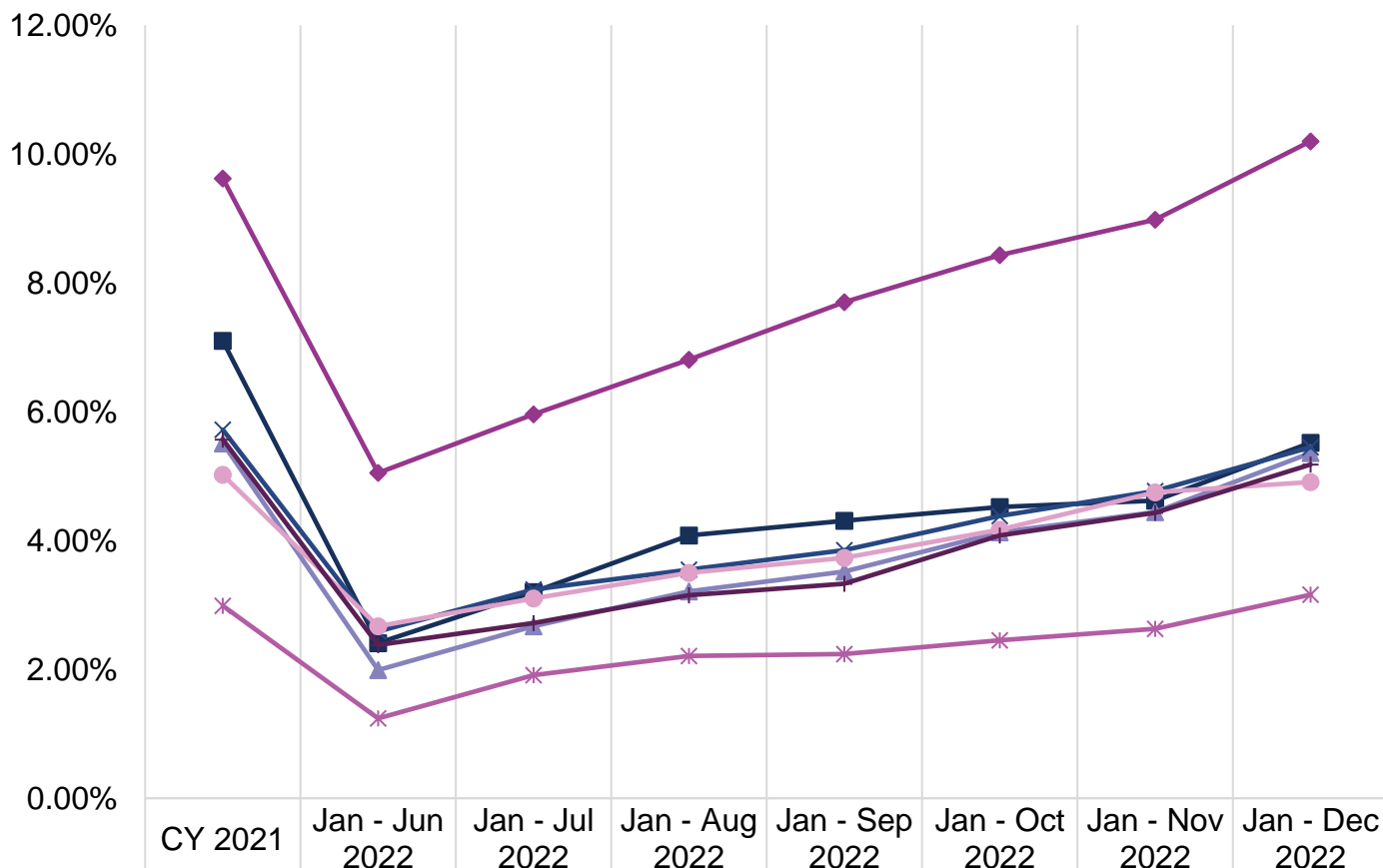
### Sealant for Ages 6-9



#### Utilization is calculated based on:

- **Numerator:** Number of members in the denominator who received a dental sealant (D1351) on a permanent first molar, including dental encounters at SNCs.
- **Denominator:** Number of members ages 6-9 with at least 90 days continuous enrollment in the same plan during the measurement period.
- Note that CY 2023 data will be updated in May 2023 update to allow the claims run-out and calculating the number of members with at least 90 days continuous enrollment in CY 2023.

### Sealant for Ages 10-14

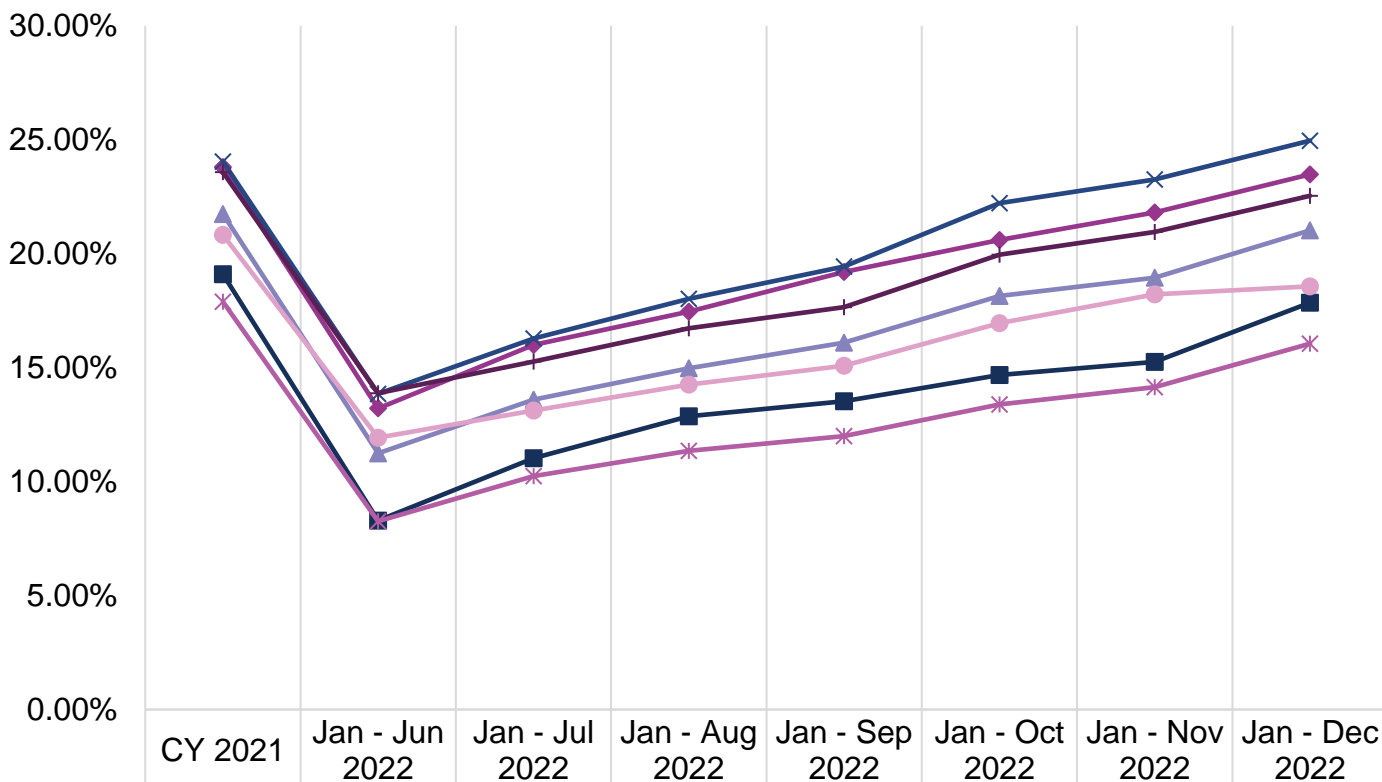


#### Utilization is calculated based on:

- **Numerator:** Number of members in the denominator who received a dental sealant (D1351) on a permanent second molar, including dental encounters at SNCs.
- **Denominator:** Number of members ages 10-14 with at least 90 days continuous enrollment in the same plan during the measurement period.
- Note that CY 2023 data will be updated in May 2023 update to allow the claims run-out and calculating the number of members with at least 90 days continuous enrollment in CY 2023.

## Dental Utilization in Adults Ages 21+

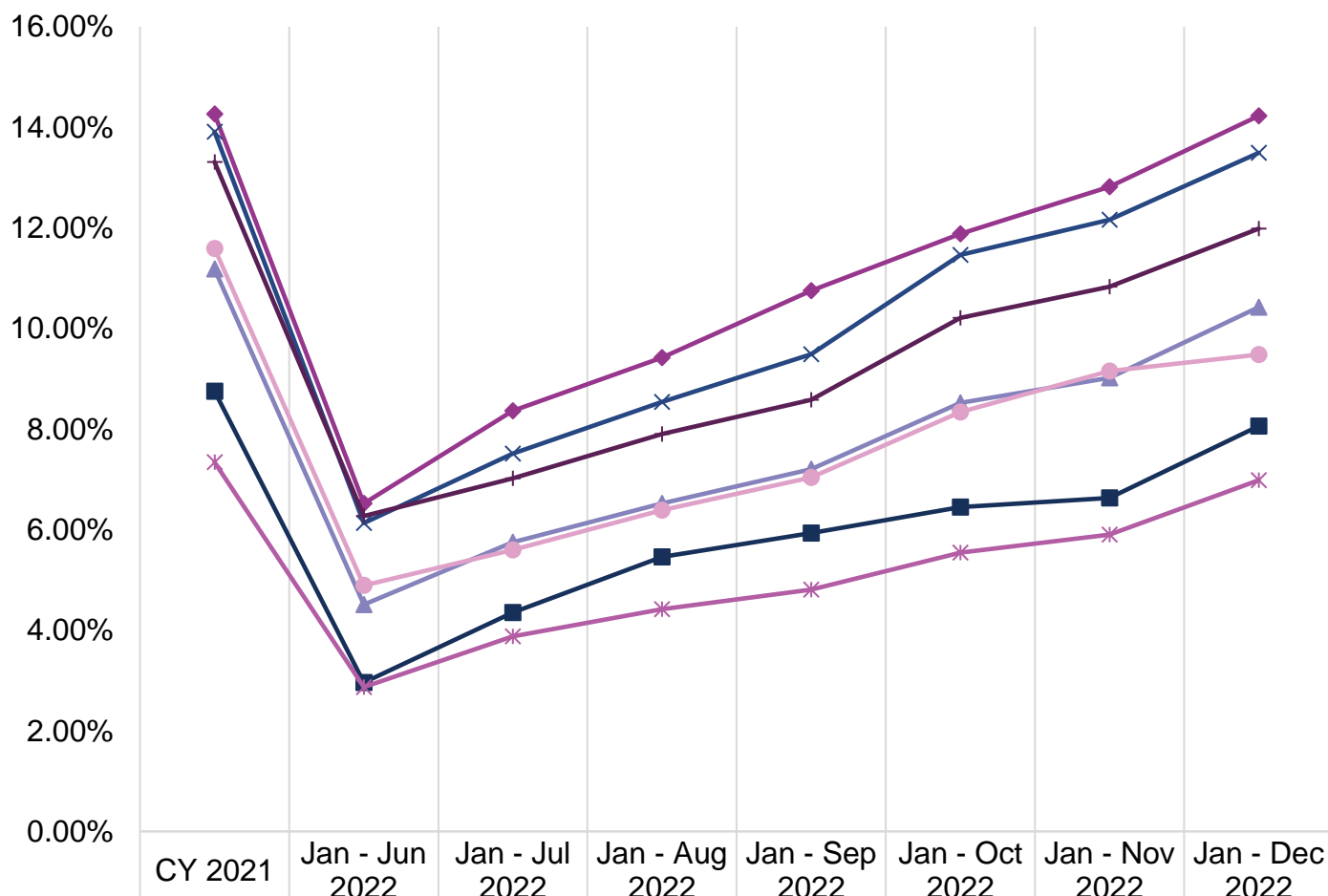
### Annual Dental Visits



#### Utilization is calculated based on:

- **Numerator:** Number of members in the denominator who received any dental service (CDT D0100-D9999), including dental encounters at SNCs.
- **Denominator:** Number of members with at least 90 days continuous enrollment in the same plan during the measurement period.
- Note that CY 2023 data will be updated in May 2023 update to allow the claims run-out and calculating the number of members with at least 90 days continuous enrollment in CY 2023.

## Preventive Services



### Utilization is calculated based on:

- **Numerator:** Number of members in the denominator who received any preventive dental service (CDT D1000-D1999), including dental encounters at SNCs.
- **Denominator:** Number of members with at least 90 days continuous enrollment in the same plan during the measurement period.
- Note that CY 2023 data will be updated in May 2023 update to allow the claims run-out and calculating the number of members with at least 90 days continuous enrollment in CY 2023.

**Data Source for all the Charts:** FFS claims processed through the California Dental Medicaid Management Information System (CD-MMIS); DMC claims received via encounter data submission from the DMC plans; CPT 99188 and SNC claims processed through the California Medicaid Management Information System (CA-MMIS) as of March 13, 2023.

### Rendering Provider Data January 2023

#### *Los Angeles and surrounding counties*

Category	Count	Percentage
FFS Only	5,859	83%
FFS and DMC	1,074	15%
DMC Only	111	2%
Total Unduplicated Providers	7,044	100%

#### *Sacramento and surrounding counties*

Category	Count	Percentage
FFS Only	138	29%
FFS and DMC	237	50%
DMC Only	98	21%
Total Unduplicated Providers	473	100%

**Data Source:** Count of providers enrolled in January 2023 who also provided services within the last year in dental offices or SNCs within Los Angeles, Sacramento, and surrounding counties (Orange, Riverside, San Bernardino, Ventura, Yolo, Placer, and El Dorado). FFS provider counts provided by the Administrative Services Organization and DMC provider counts provided by DMC plans. Providers are matched with claims for dates of services between February 1, 2022, and January 31, 2023, as of March 7, 2023, to identify the county the providers served.