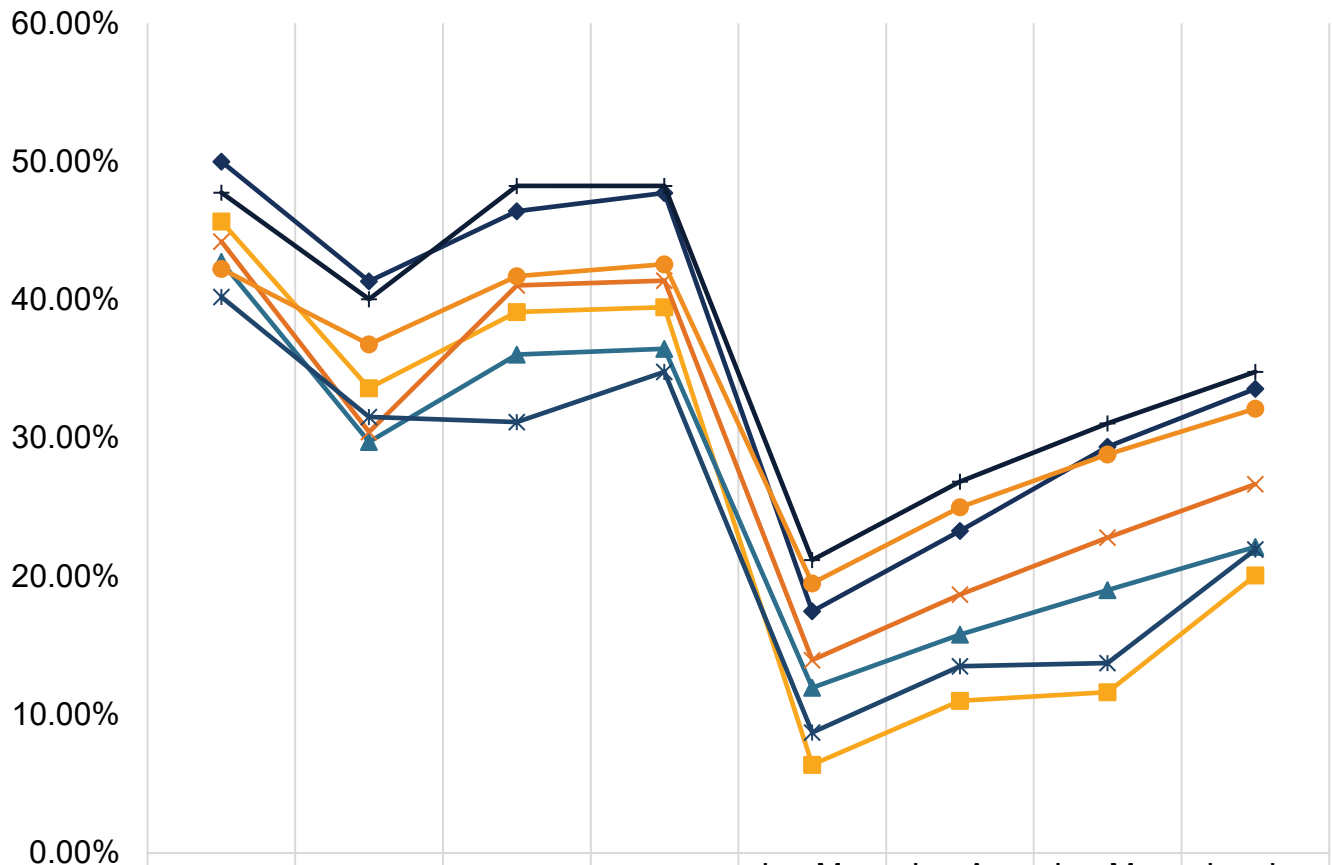


**Dental Utilization in Children Ages 0-20**

**ANNUAL DENTAL VISITS**

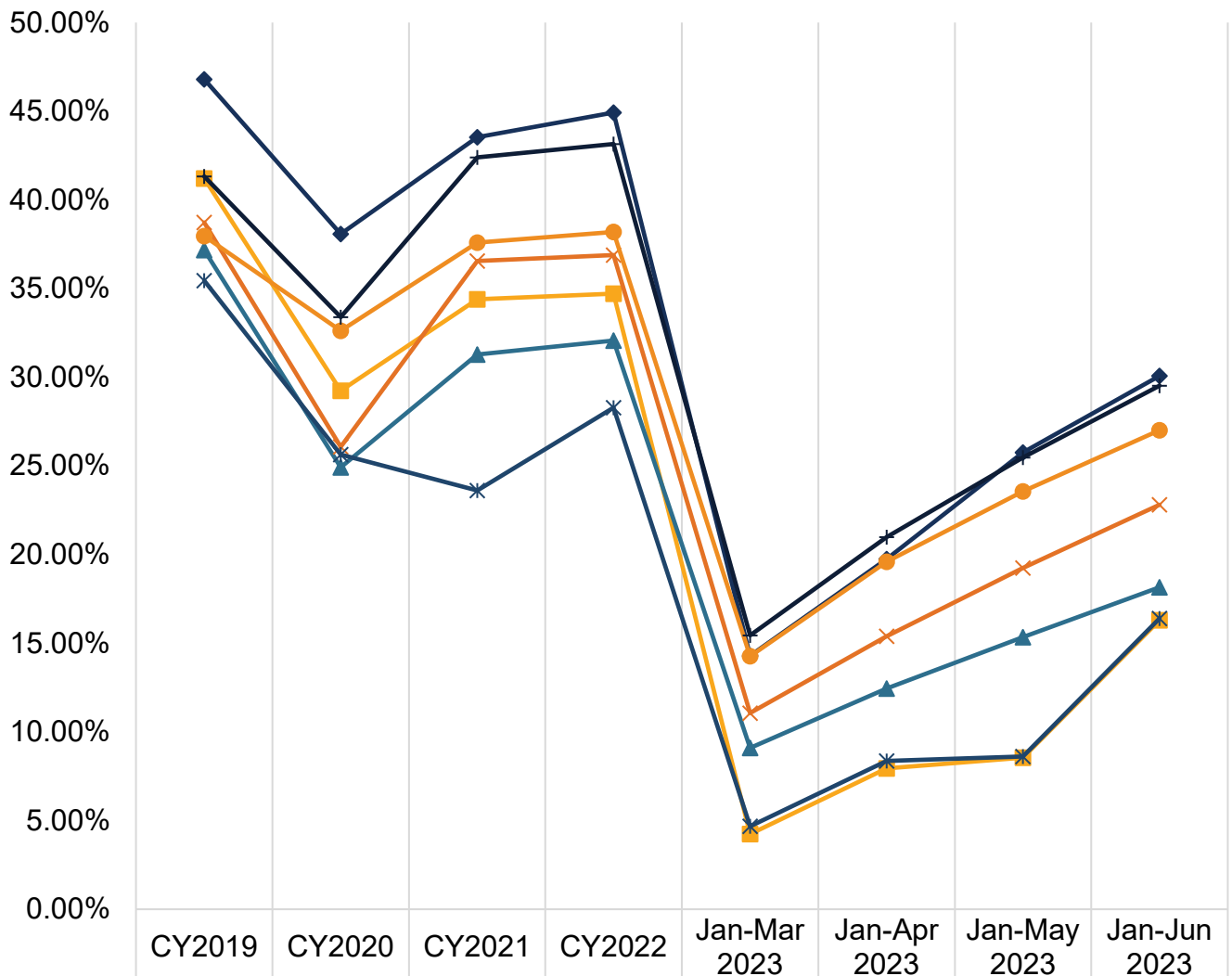


	CY2019	CY2020	CY2021	CY2022	Jan-Mar 2023	Jan-Apr 2023	Jan-May 2023	Jan-Jun 2023
◆ FFS	50.00%	41.35%	46.41%	47.74%	17.48%	23.29%	29.38%	33.57%
■ Access LA	45.67%	33.62%	39.13%	39.47%	6.39%	11.01%	11.64%	20.07%
▲ Health Net LA	42.76%	29.73%	36.04%	36.47%	11.96%	15.79%	19.01%	22.14%
✕ Liberty LA	44.22%	30.44%	41.04%	41.38%	13.96%	18.68%	22.82%	26.67%
* Access Sac	40.21%	31.52%	31.16%	34.79%	8.72%	13.50%	13.73%	21.95%
● Health Net Sac	42.24%	36.78%	41.72%	42.58%	19.51%	25.00%	28.83%	32.14%
+ Liberty Sac	47.76%	40.05%	48.24%	48.23%	21.19%	26.86%	31.07%	34.79%

**Utilization is calculated based on:**

- **Numerator:** Number of members in the denominator who received any dental service (Current Dental Terminology (CDT) D0100-D9999 or Current Procedural Terminology (CPT) 99188), including dental encounters at safety net clinics (SNCs).
- **Denominator:** Number of members with at least 90 days continuous enrollment in the same plan during the measurement period.

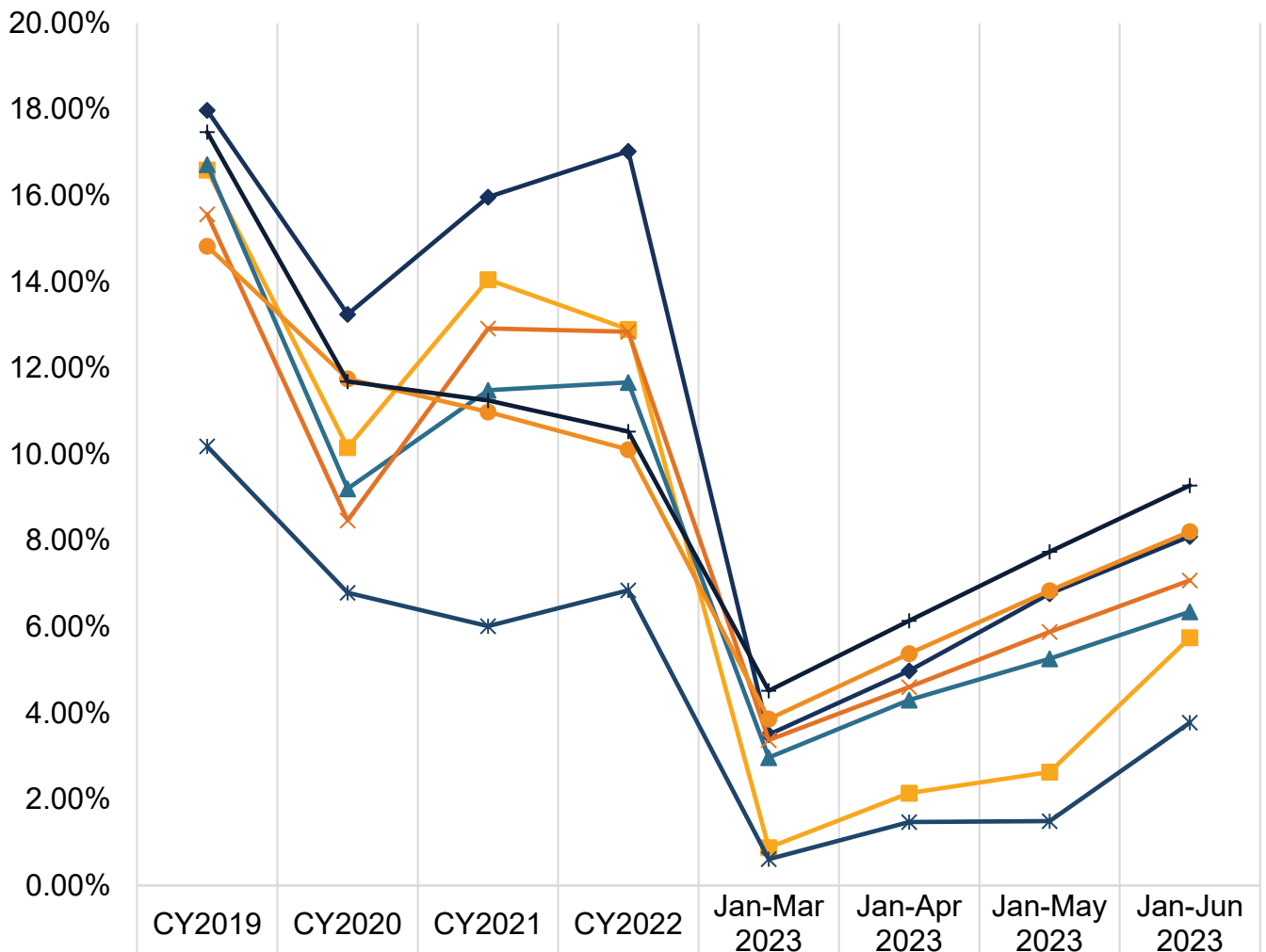
## PREVENTIVE SERVICES



### Utilization is calculated based on:

- **Numerator:** Number of members in the denominator who received any preventive dental service (CDT D1000-D1999 or CPT Code 99188), including dental encounters at SNCs.
- **Denominator:** Number of members with at least 90 days continuous enrollment in the same plan during the measurement period.

### SEALANT FOR AGES 6-9

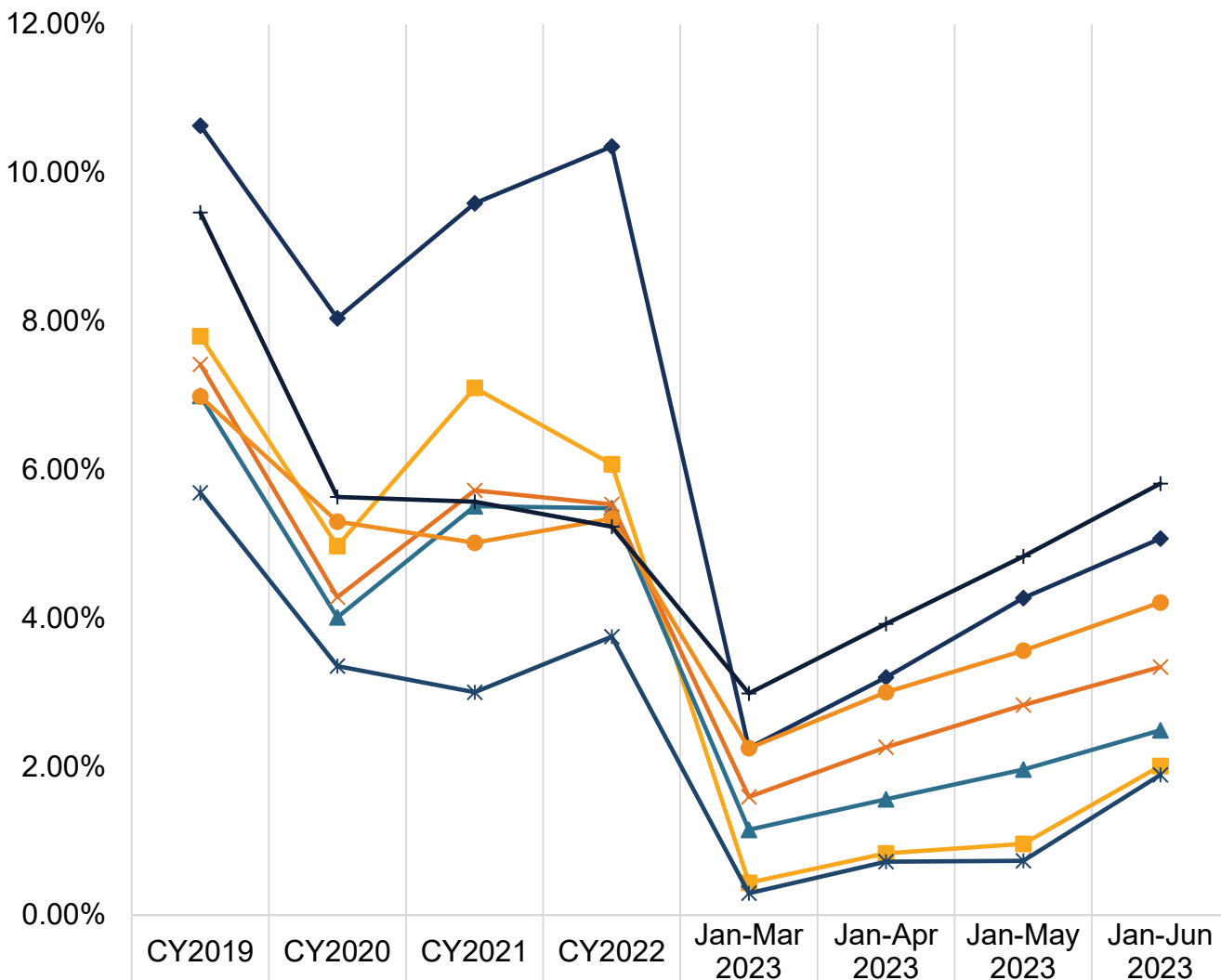


	CY2019	CY2020	CY2021	CY2022	Jan-Mar 2023	Jan-Apr 2023	Jan-May 2023	Jan-Jun 2023
FFS	17.98%	13.25%	15.97%	17.03%	3.50%	4.98%	6.77%	8.10%
Access LA	16.60%	10.16%	14.05%	12.90%	0.88%	2.14%	2.63%	5.75%
Health Net LA	16.72%	9.20%	11.48%	11.67%	2.97%	4.30%	5.26%	6.35%
Liberty LA	15.57%	8.47%	12.92%	12.84%	3.37%	4.60%	5.88%	7.08%
Access Sac	10.18%	6.79%	6.02%	6.85%	0.61%	1.47%	1.49%	3.78%
Health Net Sac	14.83%	11.75%	10.99%	10.11%	3.86%	5.38%	6.84%	8.21%
Liberty Sac	17.47%	11.69%	11.25%	10.53%	4.52%	6.14%	7.74%	9.28%

**Utilization is calculated based on:**

- **Numerator:** Number of members in the denominator who received a dental sealant (D1351) on a permanent first molar, including dental encounters at SNCs.
- **Denominator:** Number of members ages 6-9 with at least 90 days continuous enrollment in the same plan during the measurement period.

### Sealant For Ages 10-14

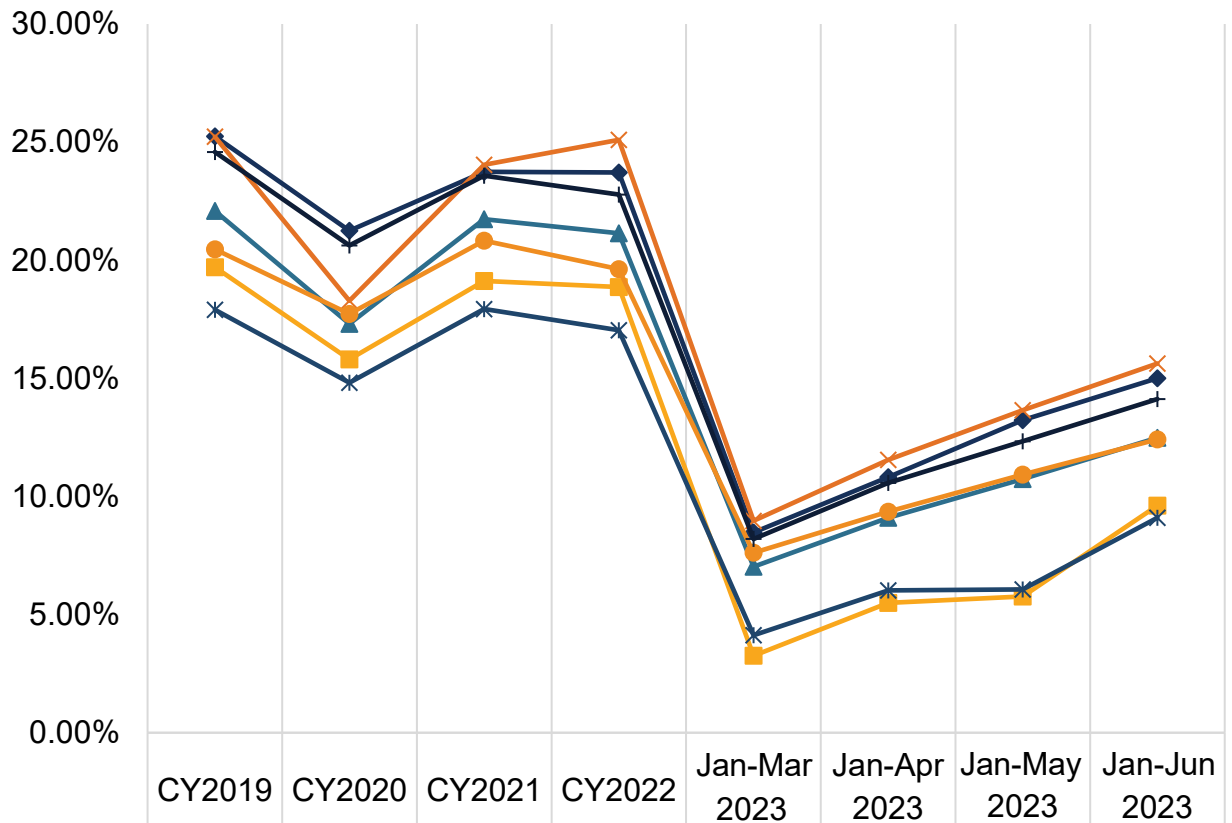


**Utilization is calculated based on:**

- **Numerator:** Number of members in the denominator who received a dental sealant (D1351) on a permanent second molar, including dental encounters at SNCs.
- **Denominator:** Number of members ages 10-14 with at least 90 days continuous enrollment in the same plan during the measurement period.

**Dental Utilization in Adults Ages 21+**

**Annual Dental Visits**

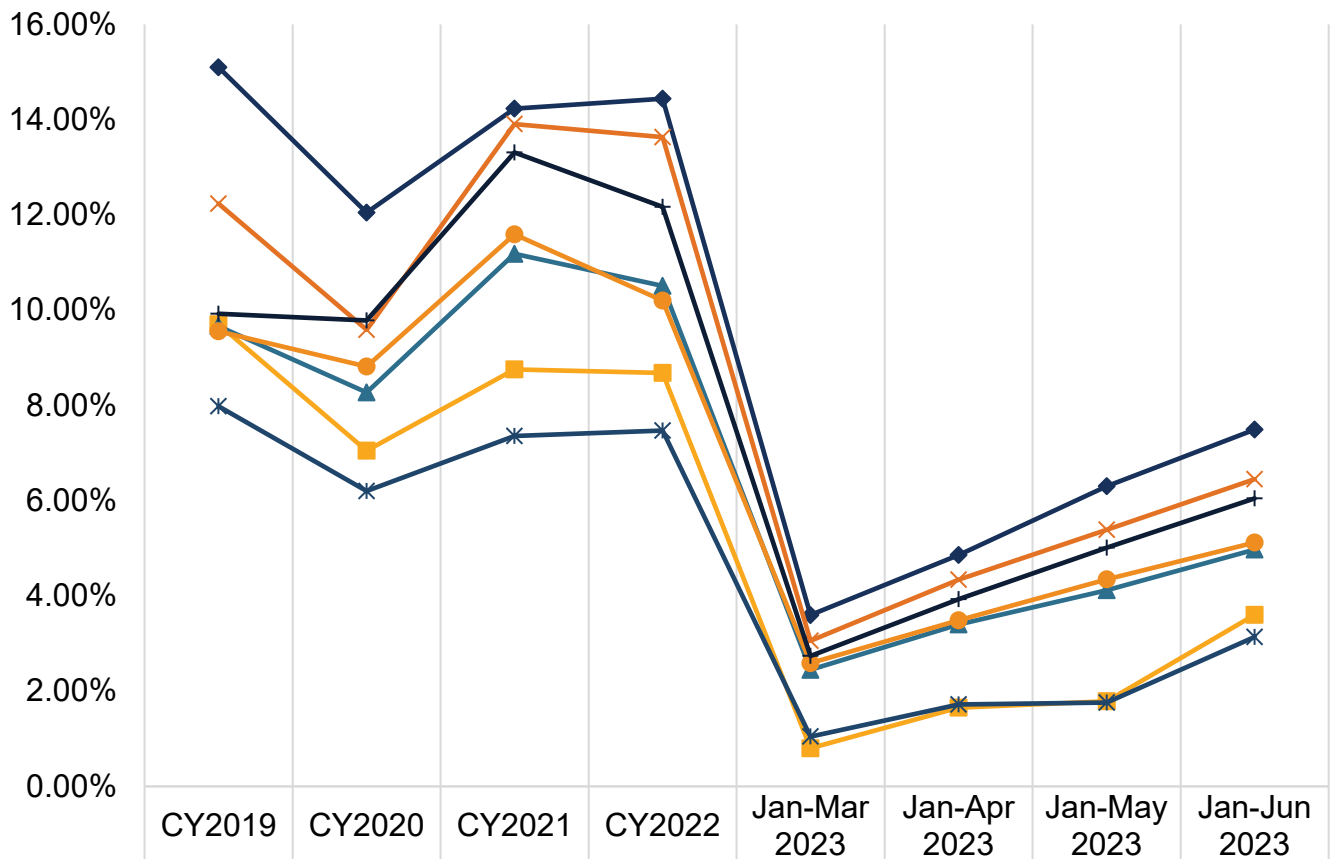


	CY2019	CY2020	CY2021	CY2022	Jan-Mar 2023	Jan-Apr 2023	Jan-May 2023	Jan-Jun 2023
FFS	25.25%	21.25%	23.75%	23.72%	8.48%	10.82%	13.23%	15.00%
Access LA	19.71%	15.81%	19.12%	18.87%	3.26%	5.49%	5.77%	9.61%
Health Net LA	22.09%	17.31%	21.74%	21.14%	7.03%	9.10%	10.74%	12.49%
Liberty LA	25.23%	18.29%	24.04%	25.10%	8.97%	11.55%	13.65%	15.63%
Access Sac	17.90%	14.81%	17.94%	17.04%	4.13%	6.02%	6.07%	9.10%
Health Net Sac	20.46%	17.73%	20.83%	19.62%	7.62%	9.36%	10.93%	12.42%
Liberty Sac	24.58%	20.62%	23.57%	22.78%	8.20%	10.57%	12.34%	14.12%

**Utilization is calculated based on:**

- **Numerator:** Number of members in the denominator who received any dental service (CDT D0100-D9999), including dental encounters at SNCs.
- **Denominator:** Number of members with at least 90 days continuous enrollment in the same plan during the measurement period.

### Preventive Services



**Utilization is calculated based on:**

- **Numerator:** Number of members in the denominator who received any preventive dental service (CDT D1000-D1999), including dental encounters at SNCs.
- **Denominator:** Number of members with at least 90 days continuous enrollment in the same plan during the measurement period.

**Data Source for all the Charts:** FFS claims processed through the California Dental Medicaid Management Information System (CD-MMIS); DMC claims received via encounter data submission from the DMC plans; CPT 99188 and SNC claims processed through the California Medicaid Management Information System (CA-MMIS) as of August 1, 2023.

**Rendering Provider Data June 2023**

*Los Angeles and surrounding counties*

Category	Count	Percentage
FFS Only	6,085	83%
FFS and DMC	1,156	16%
DMC Only	56	1%
Total Unduplicated Providers	7,297	100%

*Sacramento and surrounding counties*

Category	Count	Percentage
FFS Only	258	42%
FFS and DMC	253	41%
DMC Only	108	17%
Total Unduplicated Providers	619	100%

**Data Source:** Count of providers enrolled in June 2023 who also provided services within the last year in dental offices or SNCs within Los Angeles, Sacramento, and surrounding counties (Orange, Riverside, San Bernardino, Ventura, Yolo, Placer, and El Dorado). FFS provider counts provided by the Administrative Services Organization (ASO) and Provider Application and Validation for Enrollment (PAVE); DMC provider counts provided by DMC plans. Providers are matched with claims for date of services between July 1, 2022, and June 30, 2023, as of August 7, 2023, to identify the county the providers served.