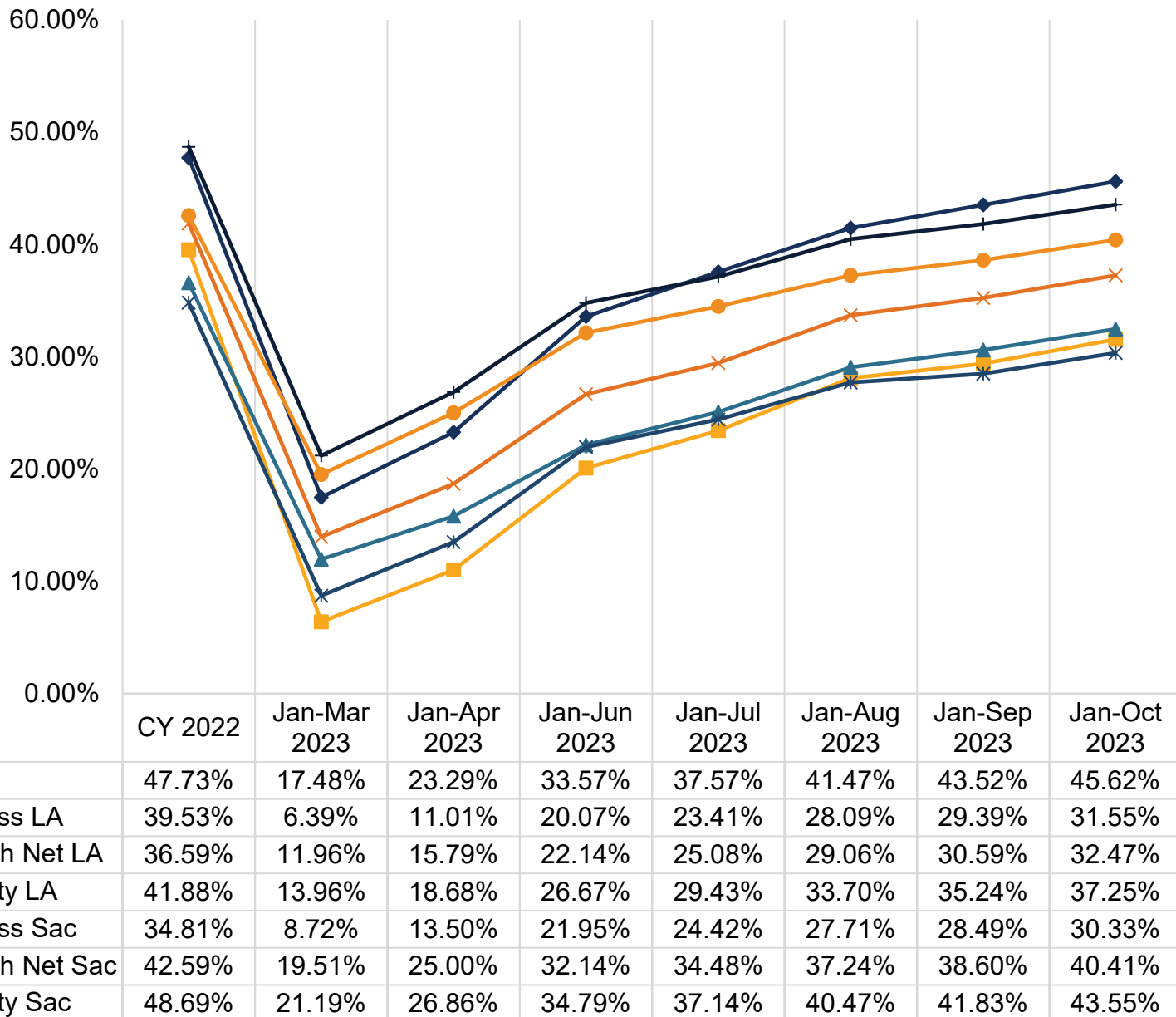


Dental Utilization in Children Ages 0-20

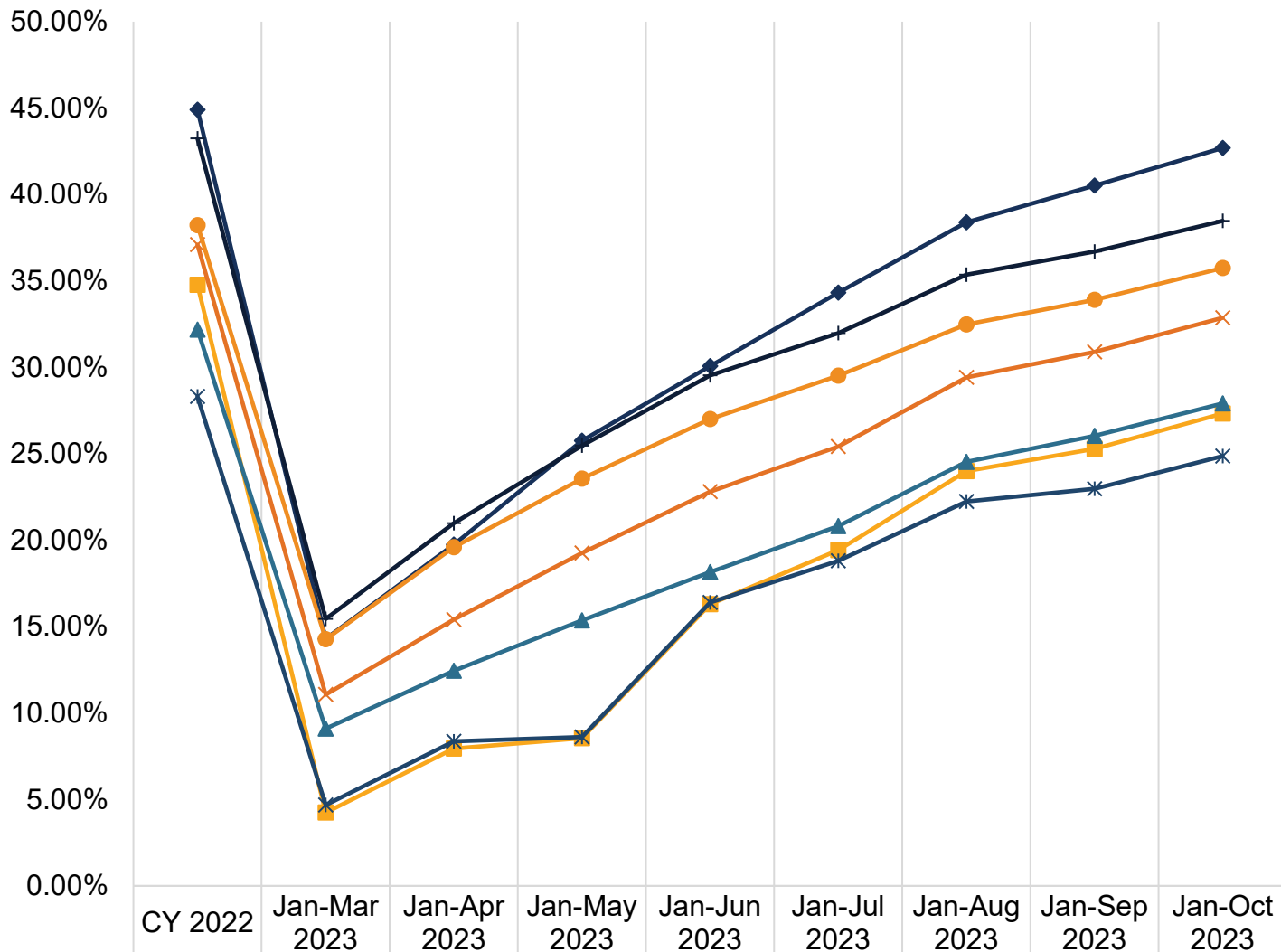
Annual Dental Visits



Utilization is calculated based on:

- **Numerator:** Number of members in the denominator who received any dental service (Current Dental Terminology (CDT) D0100-D9999 or Current Procedural Terminology (CPT) 99188), including dental encounters at safety net clinics (SNCs).
- **Denominator:** Number of members with at least 90 days continuous enrollment in the same plan during the measurement period.

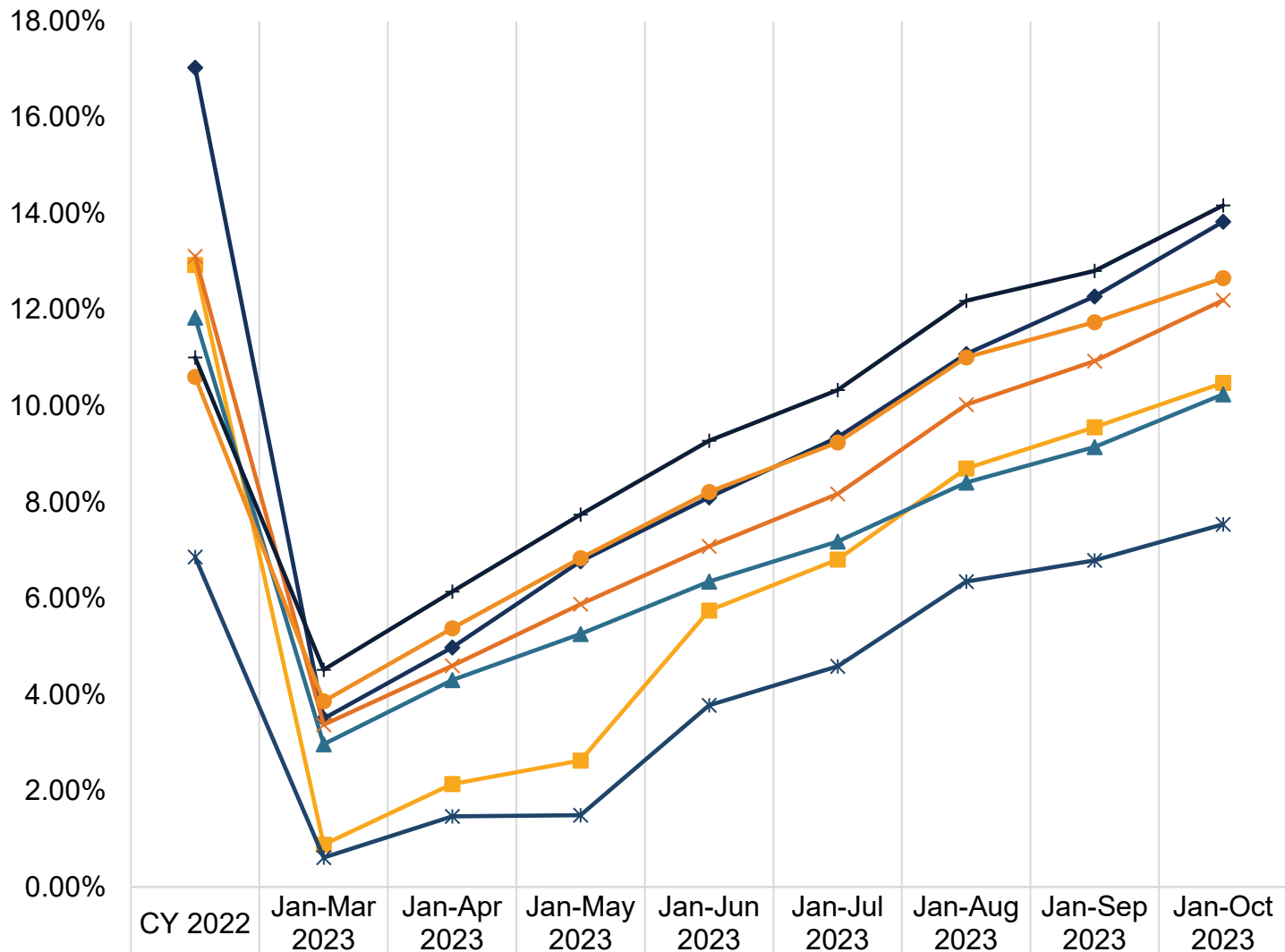
Preventive Services



Utilization is calculated based on:

- **Numerator:** Number of members in the denominator who received any preventive dental service (CDT D1000-D1999 or CPT Code 99188), including dental encounters at SNCs.
- **Denominator:** Number of members with at least 90 days continuous enrollment in the same plan during the measurement period.

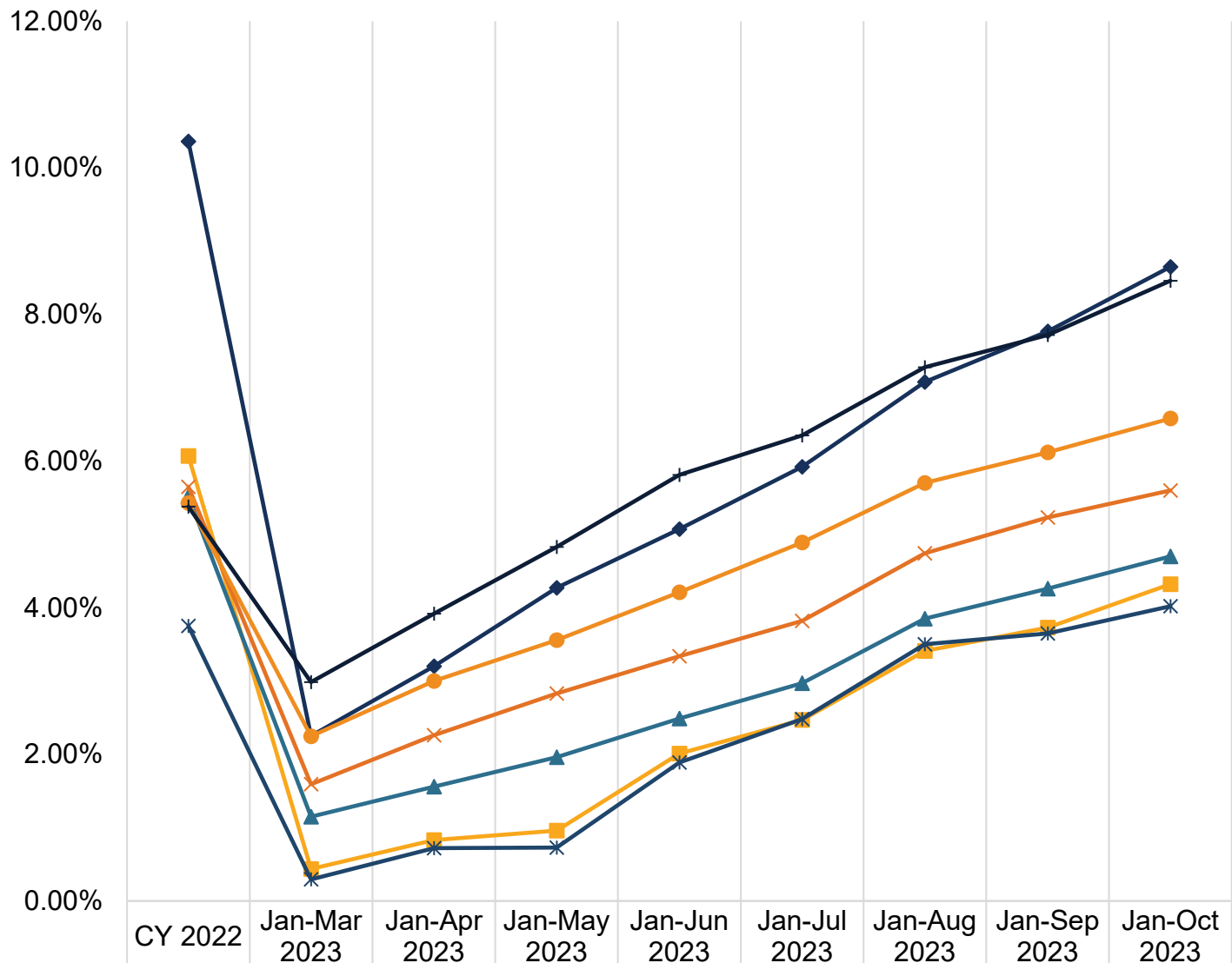
Sealant For Ages 6-9



Utilization is calculated based on:

- **Numerator:** Number of members in the denominator who received a dental sealant (D1351) on a permanent first molar, including dental encounters at SNCs.
- **Denominator:** Number of members ages 6-9 with at least 90 days continuous enrollment in the same plan during the measurement period.

Sealant For Ages 10-14

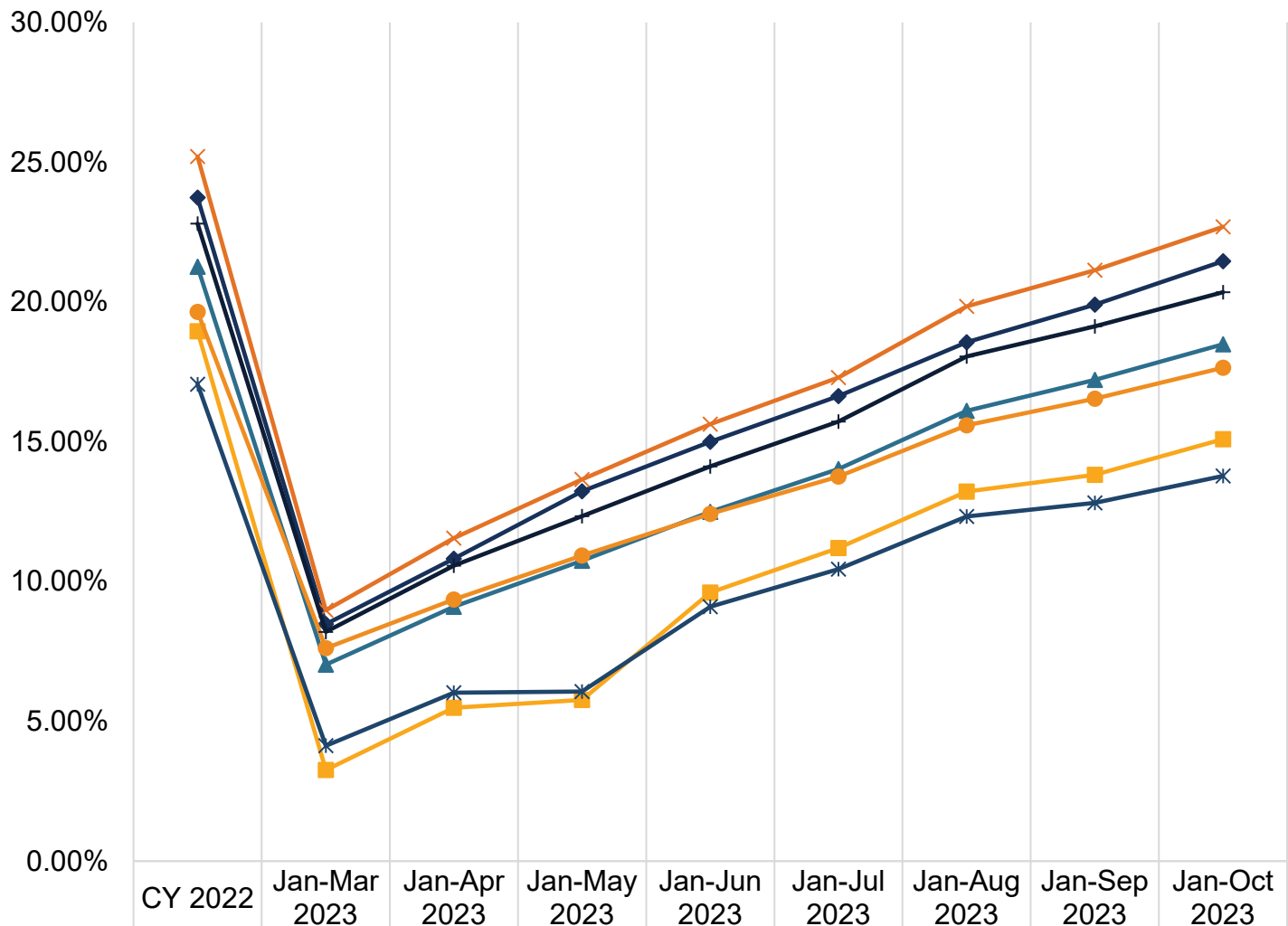


Utilization is calculated based on:

- **Numerator:** Number of members in the denominator who received a dental sealant (D1351) on a permanent second molar, including dental encounters at SNCs.
- **Denominator:** Number of members ages 10-14 with at least 90 days continuous enrollment in the same plan during the measurement period.

Dental Utilization in Adults Ages 21+

Annual Dentist Visits

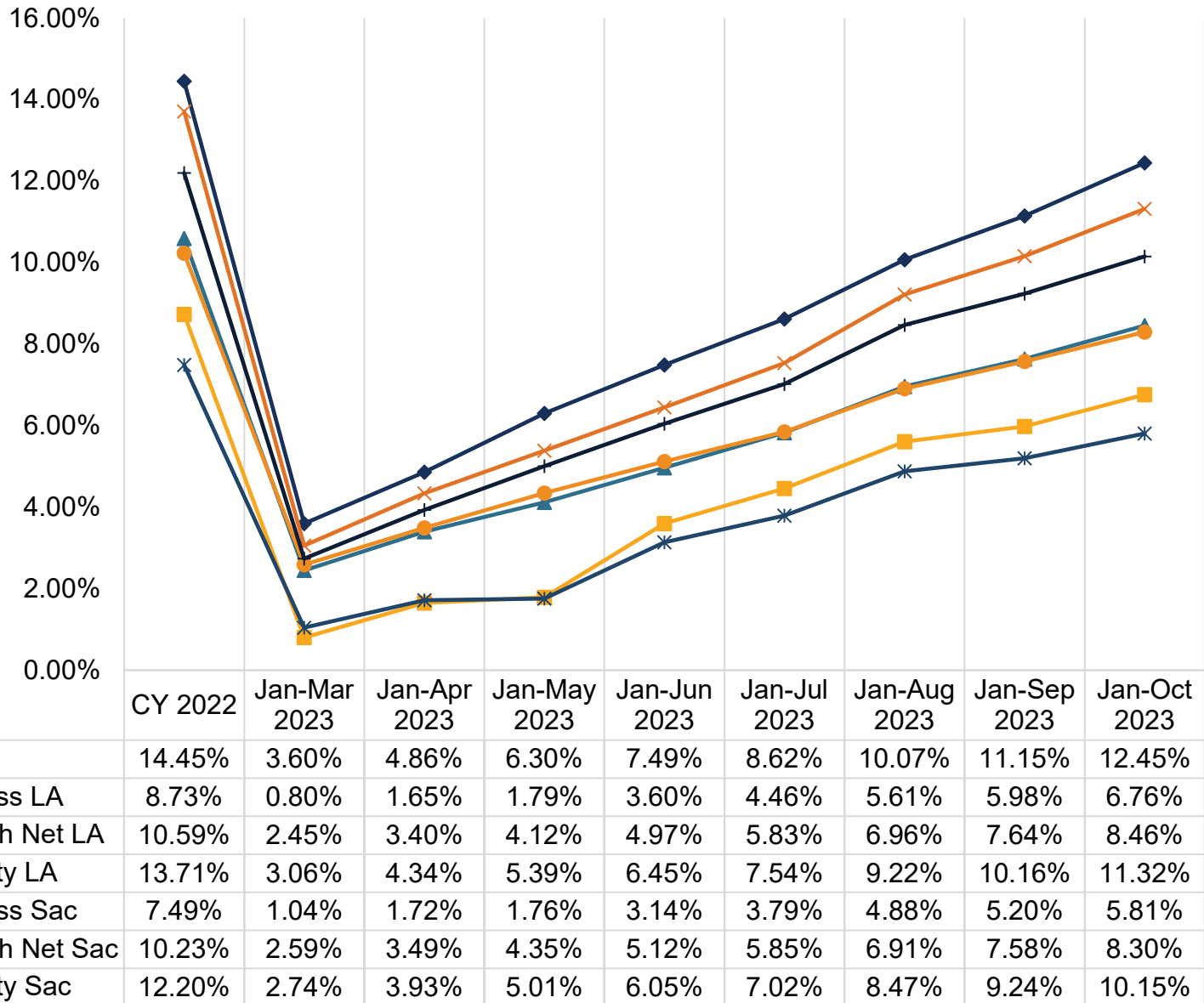


| | CY 2022 | Jan-Mar 2023 | Jan-Apr 2023 | Jan-May 2023 | Jan-Jun 2023 | Jan-Jul 2023 | Jan-Aug 2023 | Jan-Sep 2023 | Jan-Oct 2023 |
|----------------|---------|--------------|--------------|--------------|--------------|--------------|--------------|--------------|--------------|
| FFS | 23.73% | 8.48% | 10.82% | 13.23% | 15.00% | 16.63% | 18.56% | 19.90% | 21.46% |
| Access LA | 18.95% | 3.26% | 5.49% | 5.77% | 9.61% | 11.20% | 13.22% | 13.82% | 15.09% |
| Health Net LA | 21.26% | 7.03% | 9.10% | 10.74% | 12.49% | 14.03% | 16.11% | 17.21% | 18.49% |
| Liberty LA | 25.20% | 8.97% | 11.55% | 13.65% | 15.63% | 17.30% | 19.84% | 21.14% | 22.69% |
| Access Sac | 17.06% | 4.13% | 6.02% | 6.07% | 9.10% | 10.44% | 12.33% | 12.81% | 13.78% |
| Health Net Sac | 19.65% | 7.62% | 9.36% | 10.93% | 12.42% | 13.76% | 15.59% | 16.54% | 17.65% |
| Liberty Sac | 22.80% | 8.20% | 10.57% | 12.34% | 14.12% | 15.72% | 18.05% | 19.13% | 20.35% |

Utilization is calculated based on:

- **Numerator:** Number of members in the denominator who received any dental service (CDT D0100-D9999), including dental encounters at SNCs.
- **Denominator:** Number of members with at least 90 days continuous enrollment in the same plan during the measurement period.

Preventive Services



Utilization is calculated based on:

- **Numerator:** Number of members in the denominator who received any preventive dental service (CDT D1000-D1999), including dental encounters at SNCs.
- **Denominator:** Number of members with at least 90 days continuous enrollment in the same plan during the measurement period.

Data Source for all charts: FFS claims processed through the California Dental Medicaid Management Information System (CD-MMIS); DMC claims received via encounter data submission from the DMC plans; CPT 99188 and SNC claims processed through the California Medicaid Management Information System (CA-MMIS) as of December 4, 2023.

Rendering Provider Data - October 2023

Los Angeles and Surrounding Counties

| Category | Count | Percent |
|--------------|--------------|-------------|
| FFS Only | 6,074 | 82% |
| DMC and FFS | 1,229 | 17% |
| DMC only | 61 | 1% |
| Total | 7,364 | 100% |

Sacramento and Surrounding Counties

| Category | Count | Percent |
|--------------|------------|-------------|
| FFS Only | 256 | 41% |
| DMC and FFS | 262 | 42% |
| DMC only | 109 | 17% |
| Total | 627 | 100% |

Data Source: Contractor reports from October 2023 matched with claims for DOS between November 1, 2022, and October 31, 2023, as of December 7, 2023, to identify the county the providers served.