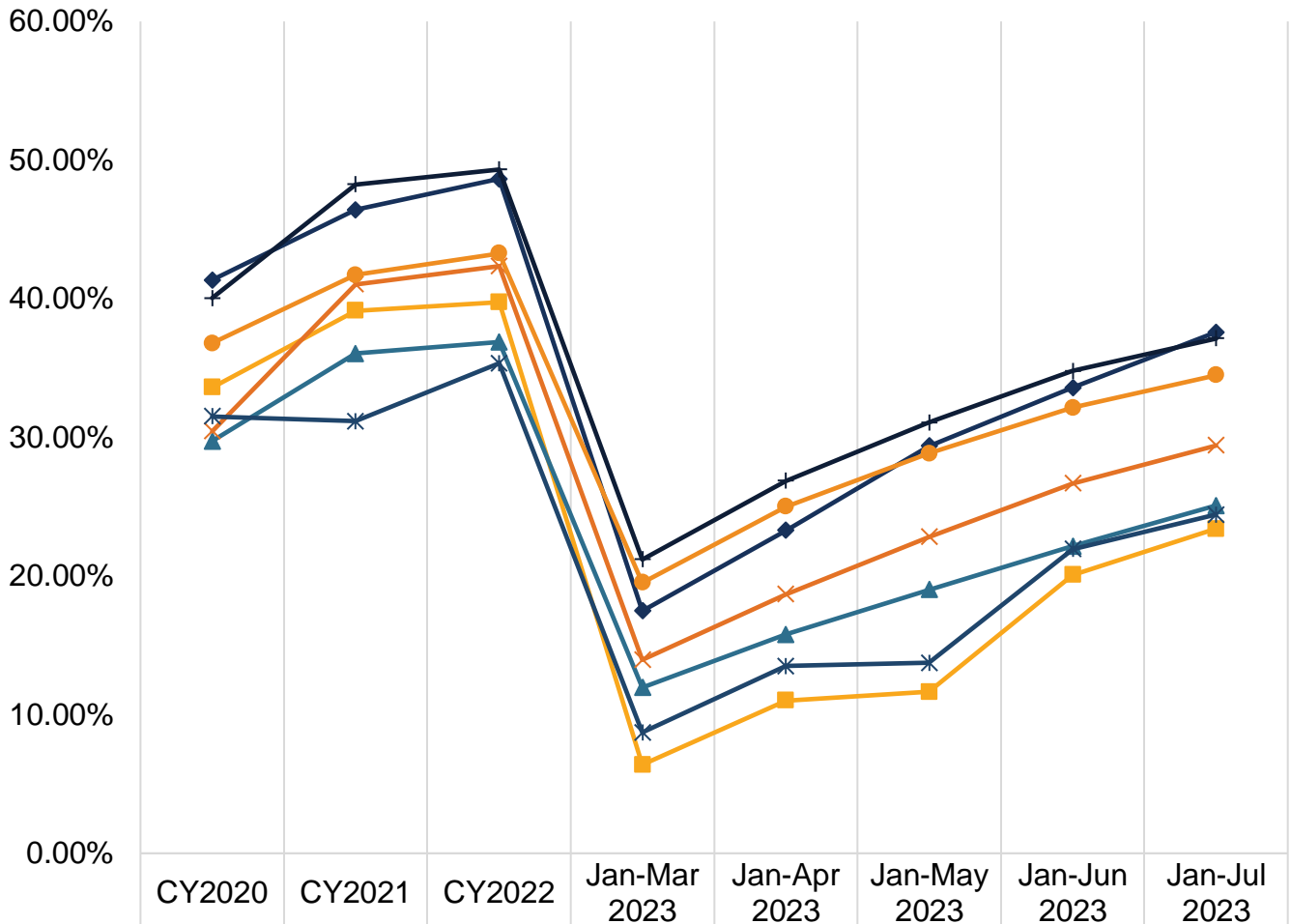


**Dental Utilization in Children Ages 0-20**

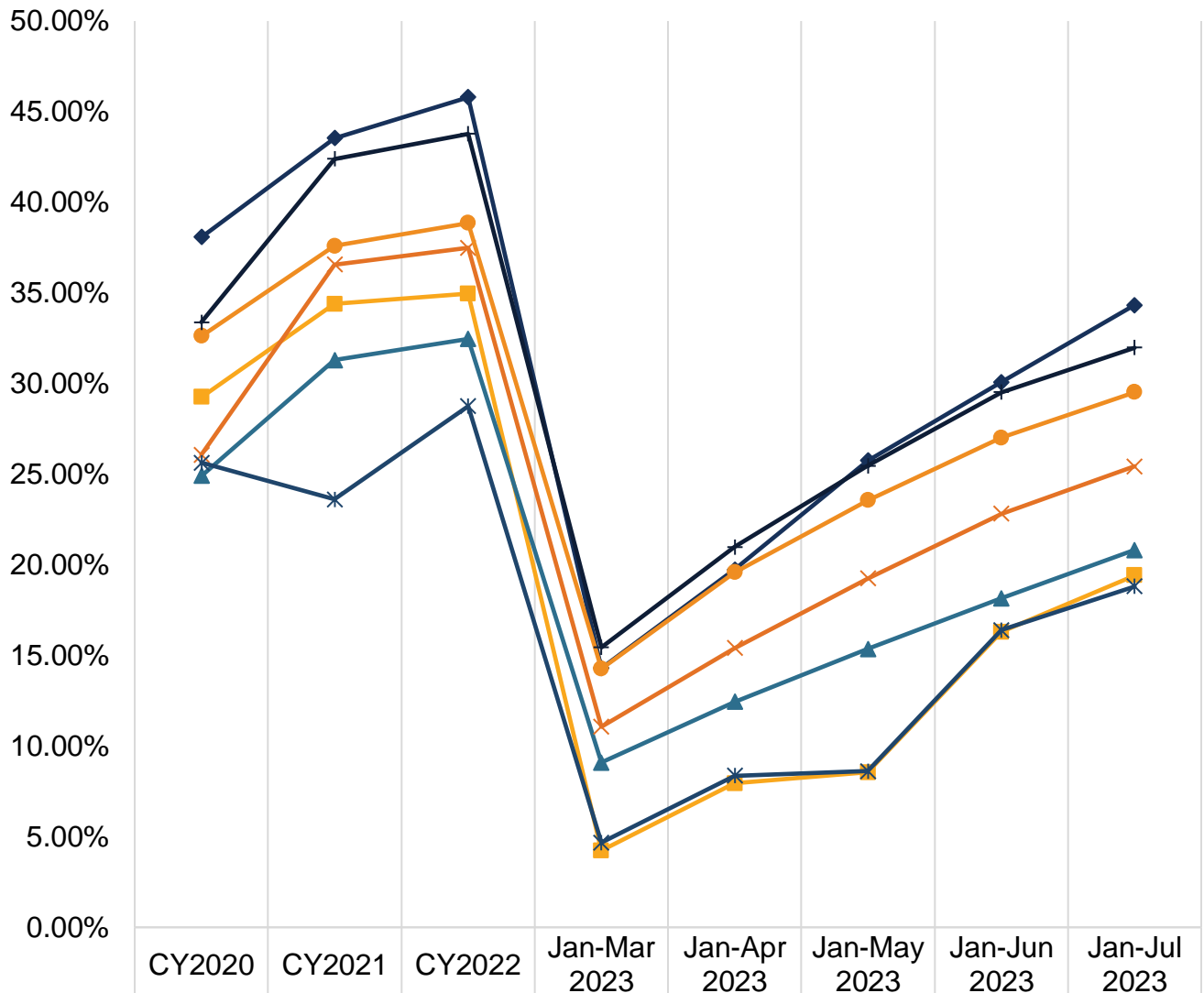
**Annual Dental Visits**



**Utilization is calculated based on:**

- **Numerator:** Number of members in the denominator who received any dental service (Current Dental Terminology (CDT) D0100-D9999 or Current Procedural Terminology (CPT) 99188), including dental encounters at safety net clinics (SNCs).
- **Denominator:** Number of members with at least 90 days continuous enrollment in the same plan during the measurement period.

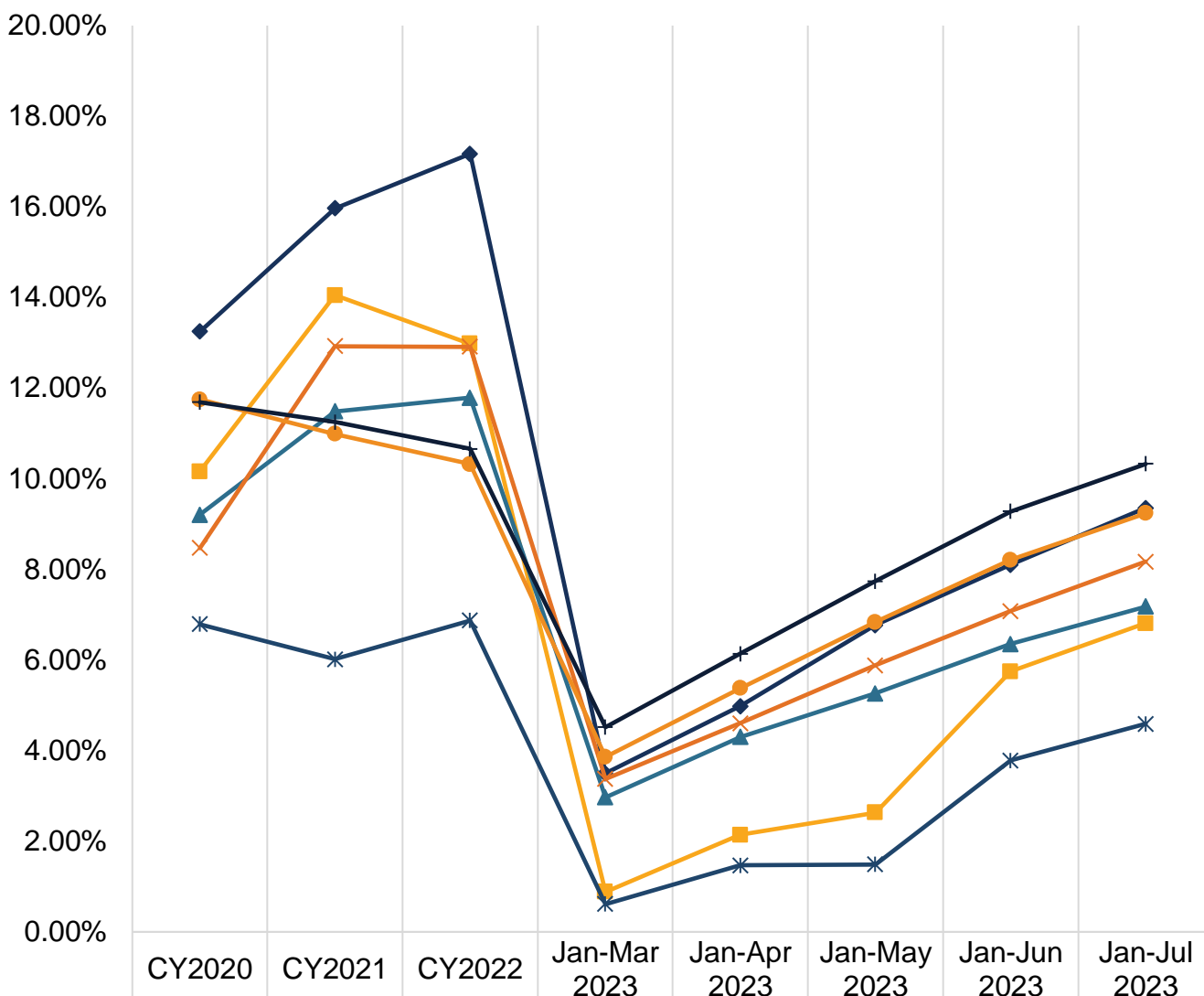
### Preventive Services



**Utilization is calculated based on:**

- **Numerator:** Number of members in the denominator who received any preventive dental service (CDT D1000-D1999 or CPT Code 99188), including dental encounters at SNCs.
- **Denominator:** Number of members with at least 90 days continuous enrollment in the same plan during the measurement period.

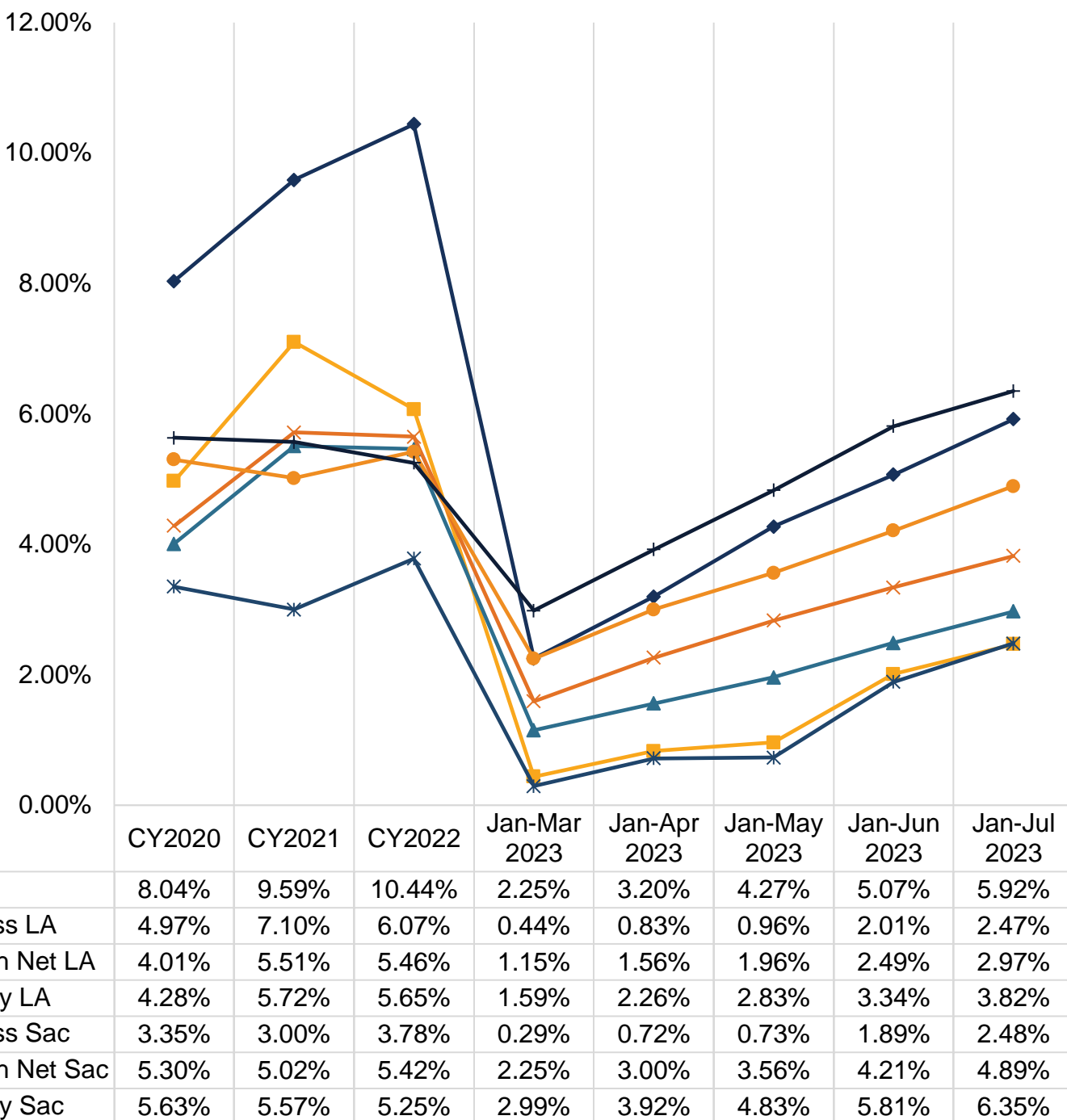
### Sealant For Ages 6-9



**Utilization is calculated based on:**

- **Numerator:** Number of members in the denominator who received a dental sealant (D1351) on a permanent first molar, including dental encounters at SNCs.
- **Denominator:** Number of members ages 6-9 with at least 90 days continuous enrollment in the same plan during the measurement period.

### Sealant For Ages 10-14

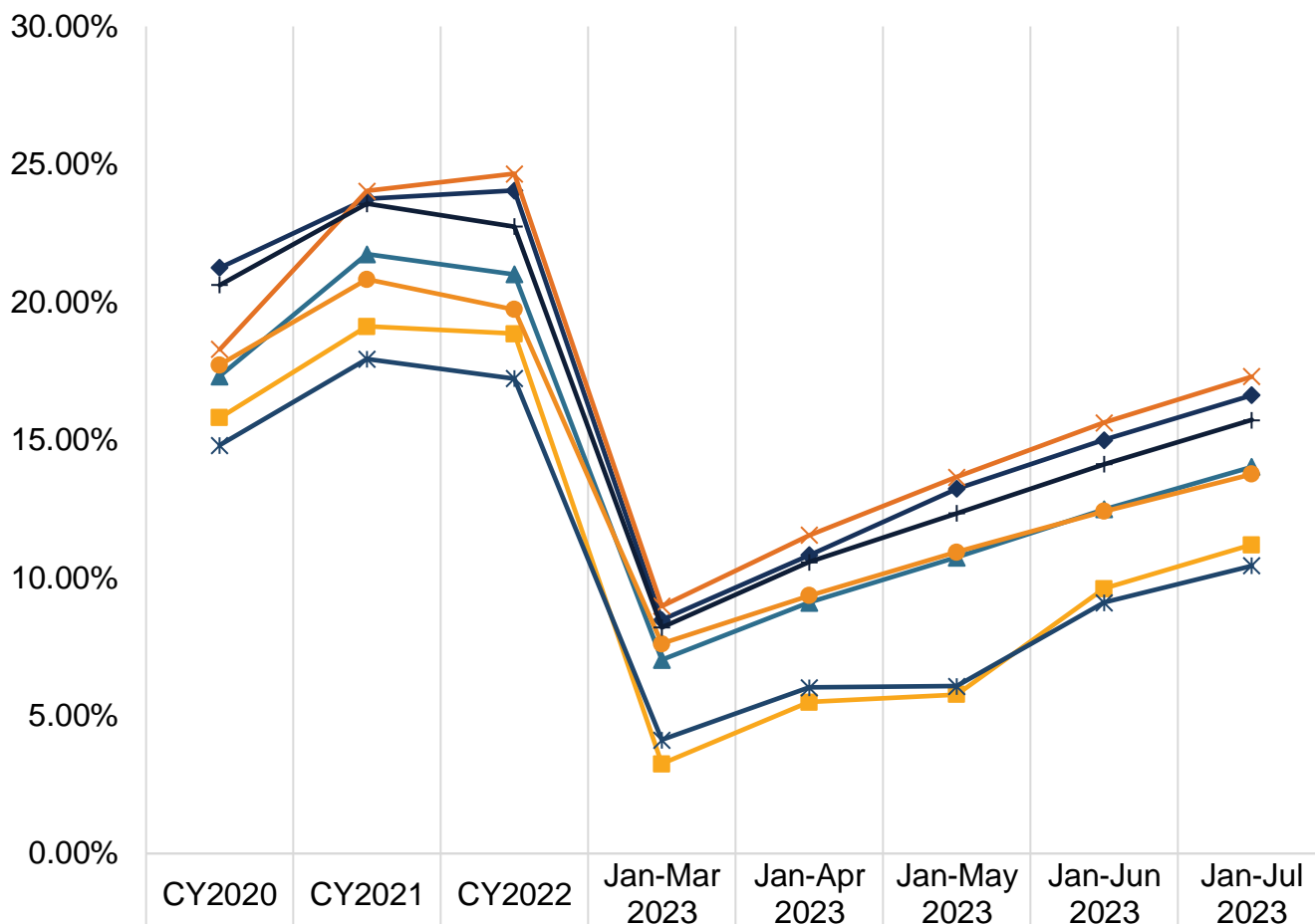


**Utilization is calculated based on:**

- **Numerator:** Number of members in the denominator who received a dental sealant (D1351) on a permanent second molar, including dental encounters at SNCs.
- **Denominator:** Number of members ages 10-14 with at least 90 days continuous enrollment in the same plan during the measurement period.

**Dental Utilization in Adults Ages 21+**

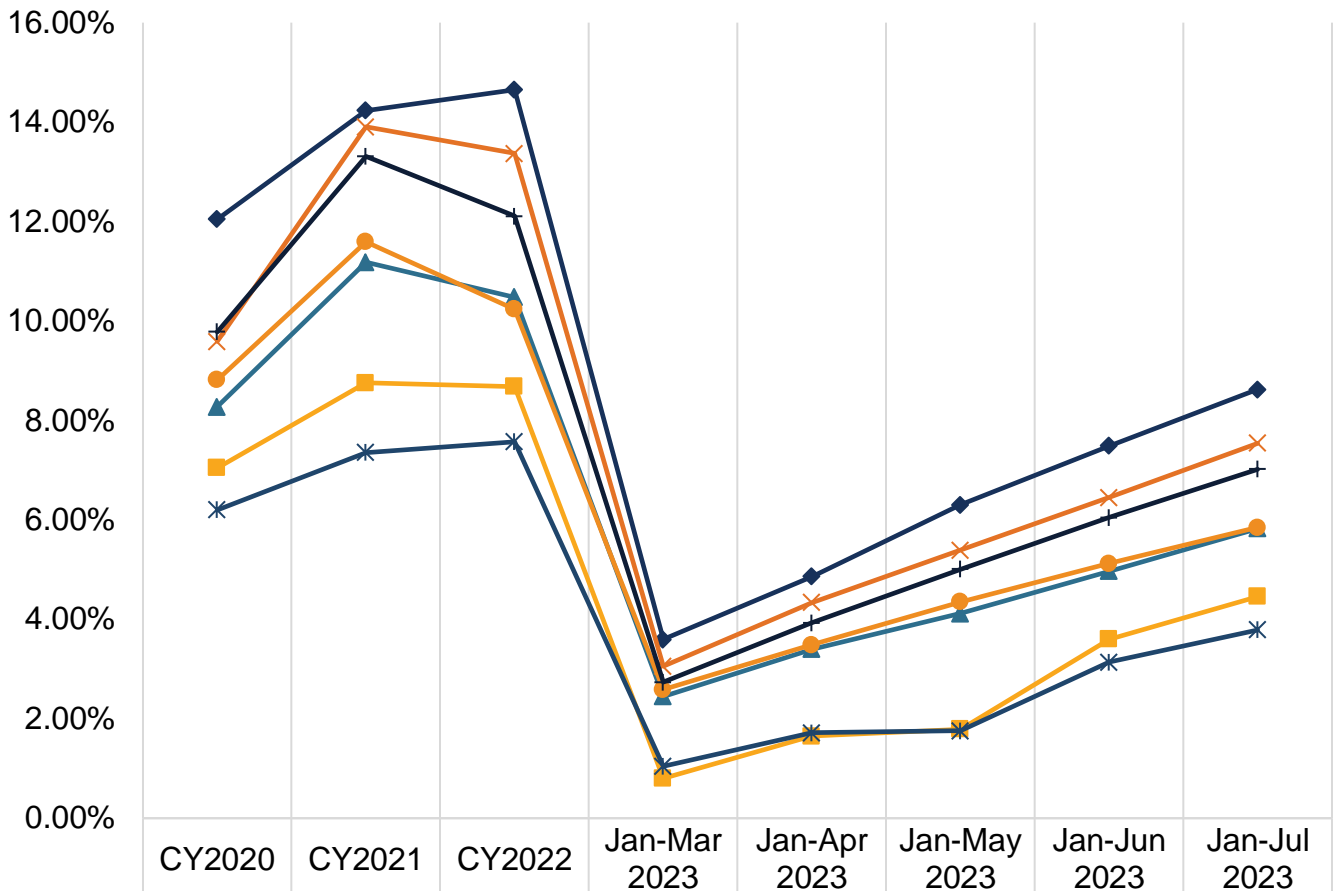
**Annual Dental Visits**



**Utilization is calculated based on:**

- **Numerator:** Number of members in the denominator who received any dental service (CDT D0100-D9999), including dental encounters at SNCs.
- **Denominator:** Number of members with at least 90 days continuous enrollment in the same plan during the measurement period.

### Preventive Services



#### Utilization is calculated based on:

- **Numerator:** Number of members in the denominator who received any preventive dental service (CDT D1000-D1999), including dental encounters at SNCs.
- **Denominator:** Number of members with at least 90 days continuous enrollment in the same plan during the measurement period.

**Data Source for all the Charts:** FFS claims processed through the California Dental Medicaid Management Information System (CD-MMIS); DMC claims received via encounter data submission from the DMC plans; CPT 99188 and SNC claims processed through the California Medicaid Management Information System (CA-MMIS) as of August 28, 2023.

## Rendering Provider Data July 2023

### *Los Angeles and surrounding counties*

Category	Count	Percentage
FFS Only	6,026	83%
FFS and DMC	1,162	16%
DMC Only	59	1%
Total Unduplicated Providers	<b>7,247</b>	<b>100%</b>

### *Sacramento and surrounding counties*

Category	Count	Percentage
FFS Only	251	41%
FFS and DMC	259	42%
DMC Only	103	17%
Total Unduplicated Providers	<b>613</b>	<b>100%</b>

**Data Source:** Count of providers enrolled in July 2023 who also provided services within the last year in dental offices or SNCs within Los Angeles, Sacramento, and surrounding counties (Orange, Riverside, San Bernardino, Ventura, Yolo, Placer, and El Dorado). FFS provider counts provided by the Administrative Services Organization (ASO) and Provider Application and Validation for Enrollment (PAVE); DMC provider counts provided by DMC plans. Providers are matched with claims for date of services between August 1, 2022, and July 31, 2023, as of September 14, 2023, to identify the county the providers served.