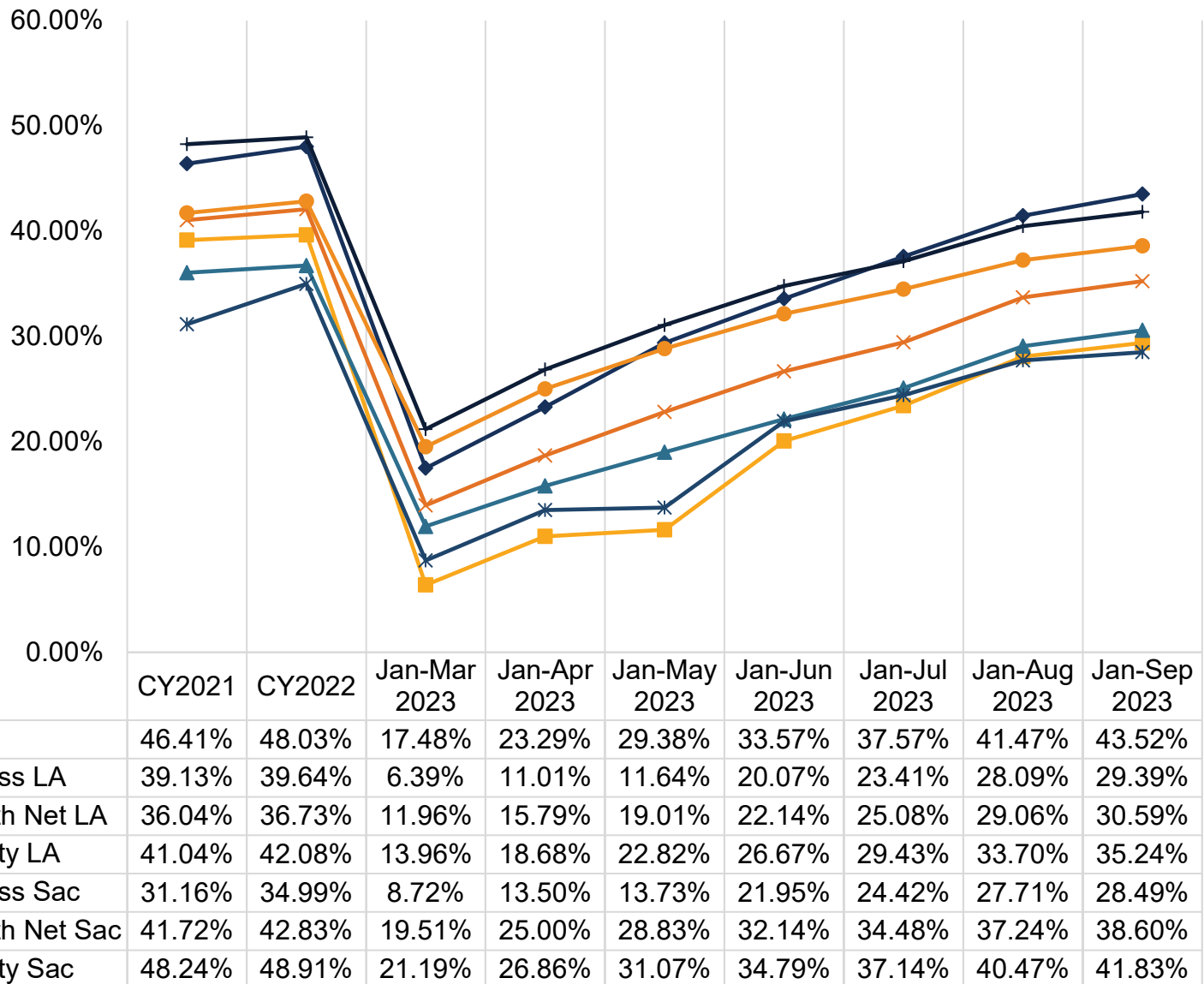


Dental Utilization in Children Ages 0-20

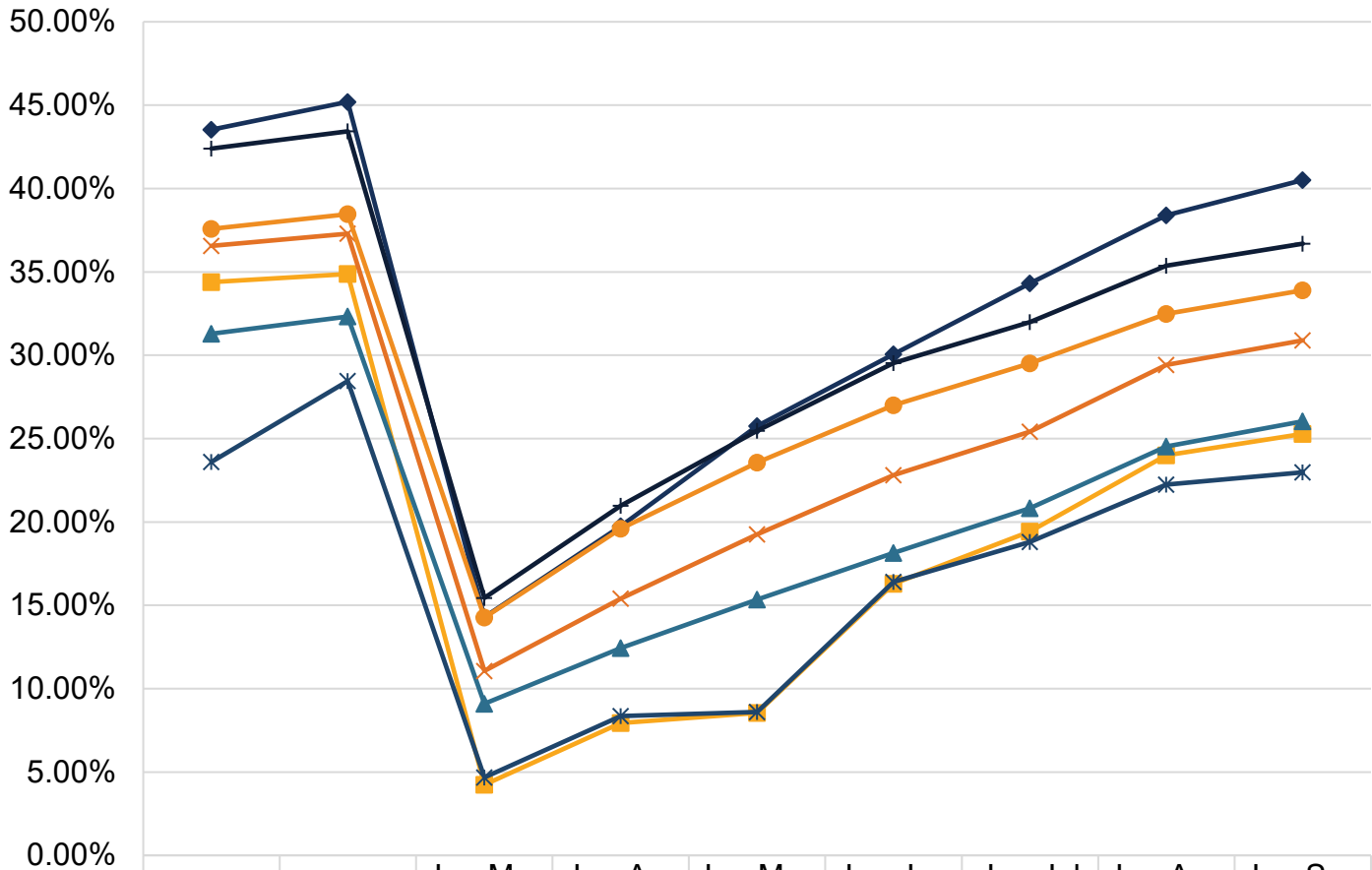
Annual Dental Visits



Utilization is calculated based on:

- **Numerator:** Number of members in the denominator who received any dental service (Current Dental Terminology (CDT) D0100-D9999 or Current Procedural Terminology (CPT) 99188), including dental encounters at safety net clinics (SNCs).
- **Denominator:** Number of members with at least 90 days continuous enrollment in the same plan during the measurement period.

Preventive

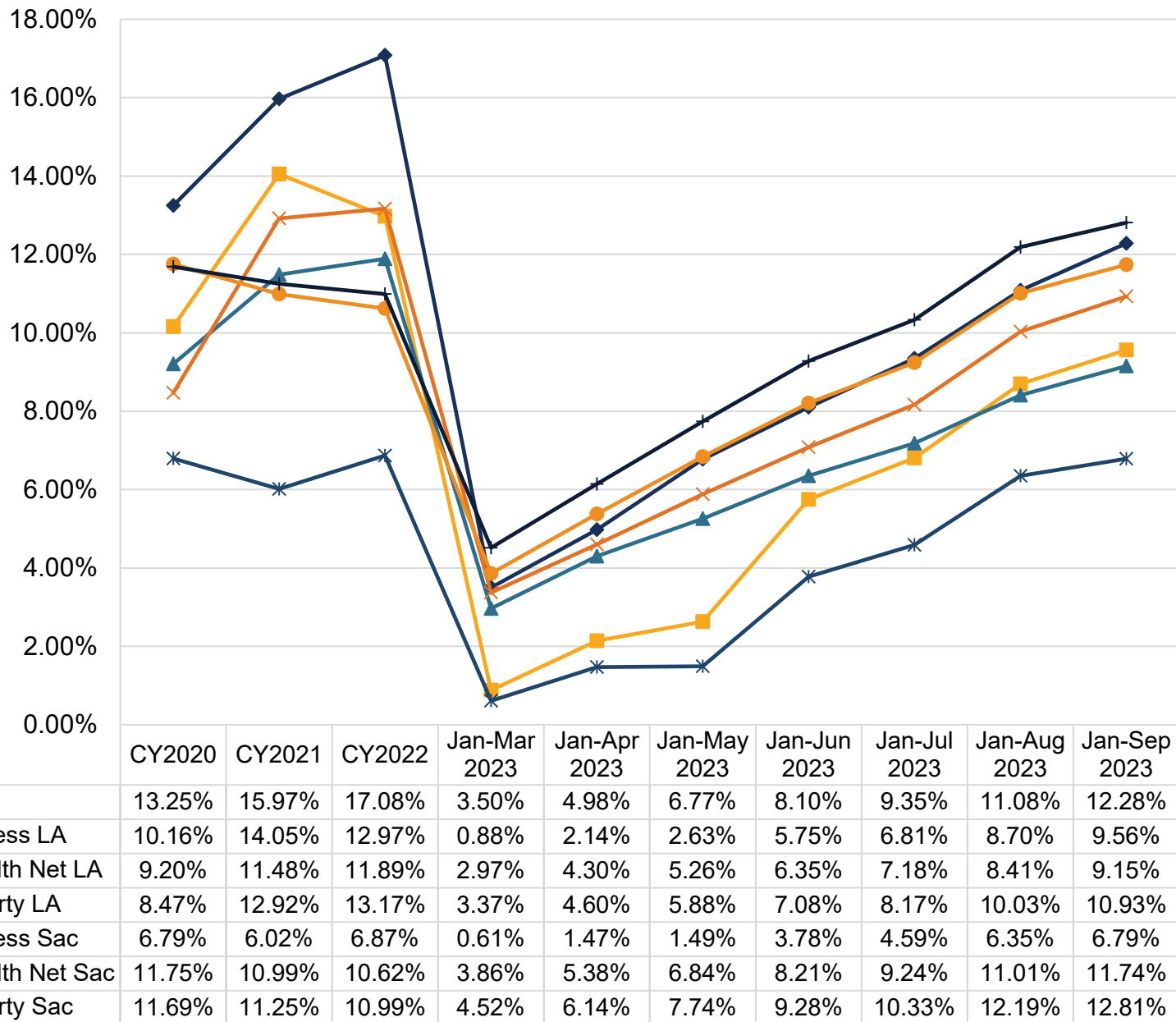


	CY2021	CY2022	Jan-Mar 2023	Jan-Apr 2023	Jan-May 2023	Jan-Jun 2023	Jan-Jul 2023	Jan-Aug 2023	Jan-Sep 2023
FFS	43.53%	45.20%	14.29%	19.74%	25.75%	30.07%	34.32%	38.39%	40.51%
Access LA	34.39%	34.87%	4.24%	7.94%	8.55%	16.29%	19.42%	24.00%	25.28%
Health Net LA	31.28%	32.32%	9.10%	12.44%	15.35%	18.15%	20.82%	24.53%	26.03%
Liberty LA	36.56%	37.29%	11.06%	15.40%	19.25%	22.81%	25.42%	29.42%	30.89%
Access Sac	23.61%	28.45%	4.68%	8.36%	8.61%	16.40%	18.81%	22.24%	22.98%
Health Net Sac	37.58%	38.46%	14.27%	19.59%	23.56%	27.01%	29.52%	32.48%	33.90%
Liberty Sac	42.40%	43.43%	15.44%	20.98%	25.47%	29.53%	31.98%	35.36%	36.70%

Utilization is calculated based on:

- **Numerator:** Number of members in the denominator who received any preventive dental service (CDT D1000-D1999 or CPT Code 99188), including dental encounters at SNCs.
- **Denominator:** Number of members with at least 90 days continuous enrollment in the same plan during the measurement period.

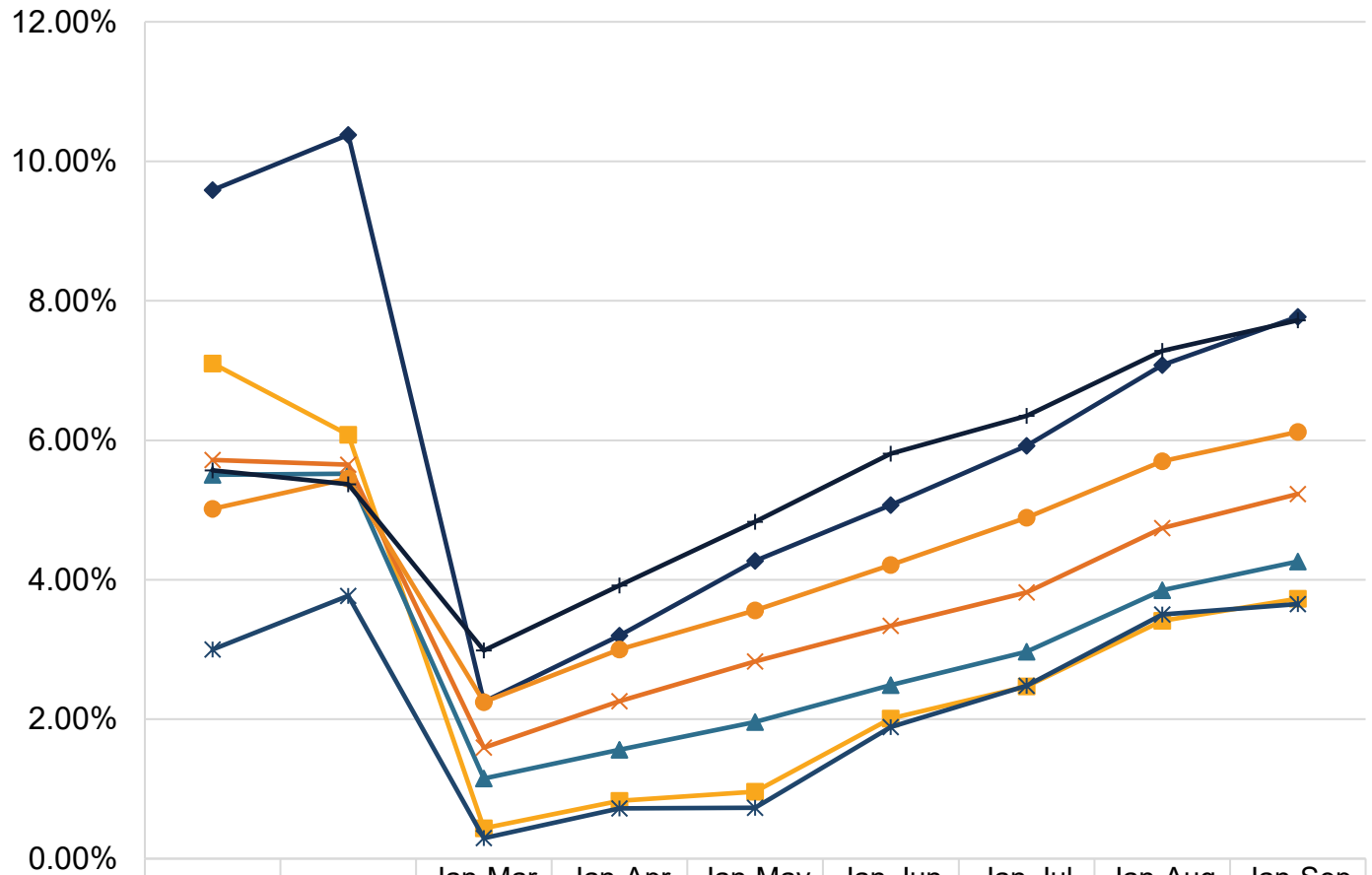
Sealant For Ages 6-9



Utilization is calculated based on:

- **Numerator:** Number of members in the denominator who received a dental sealant (D1351) on a permanent first molar, including dental encounters at SNCs.
- **Denominator:** Number of members ages 6-9 with at least 90 days continuous enrollment in the same plan during the measurement period.

Sealant For Ages 10-14

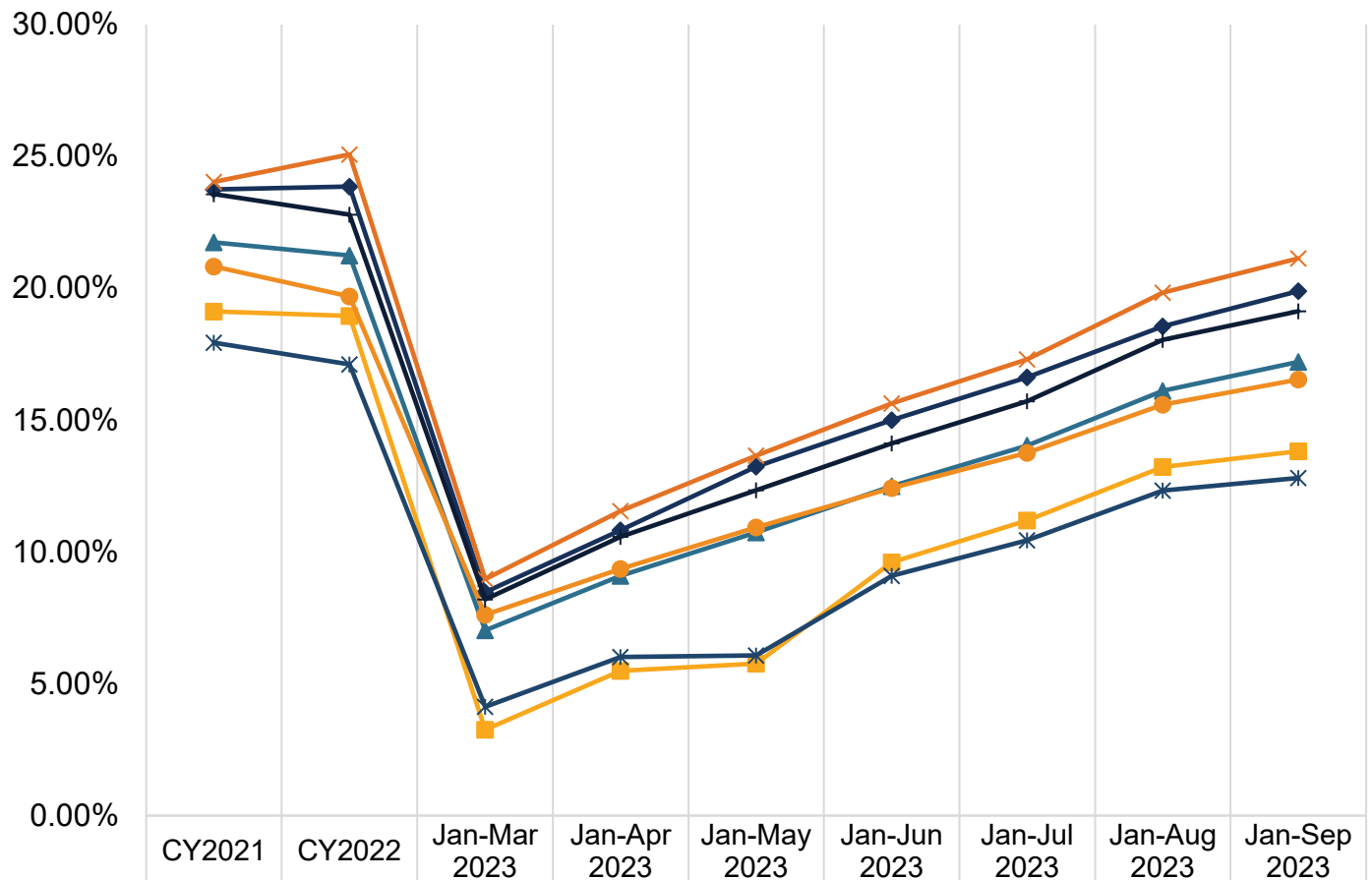


Utilization is calculated based on:

- **Numerator:** Number of members in the denominator who received a dental sealant (D1351) on a permanent second molar, including dental encounters at SNCs.
- **Denominator:** Number of members ages 10-14 with at least 90 days continuous enrollment in the same plan during the measurement period.

Dental Utilization in Adults Ages 21+

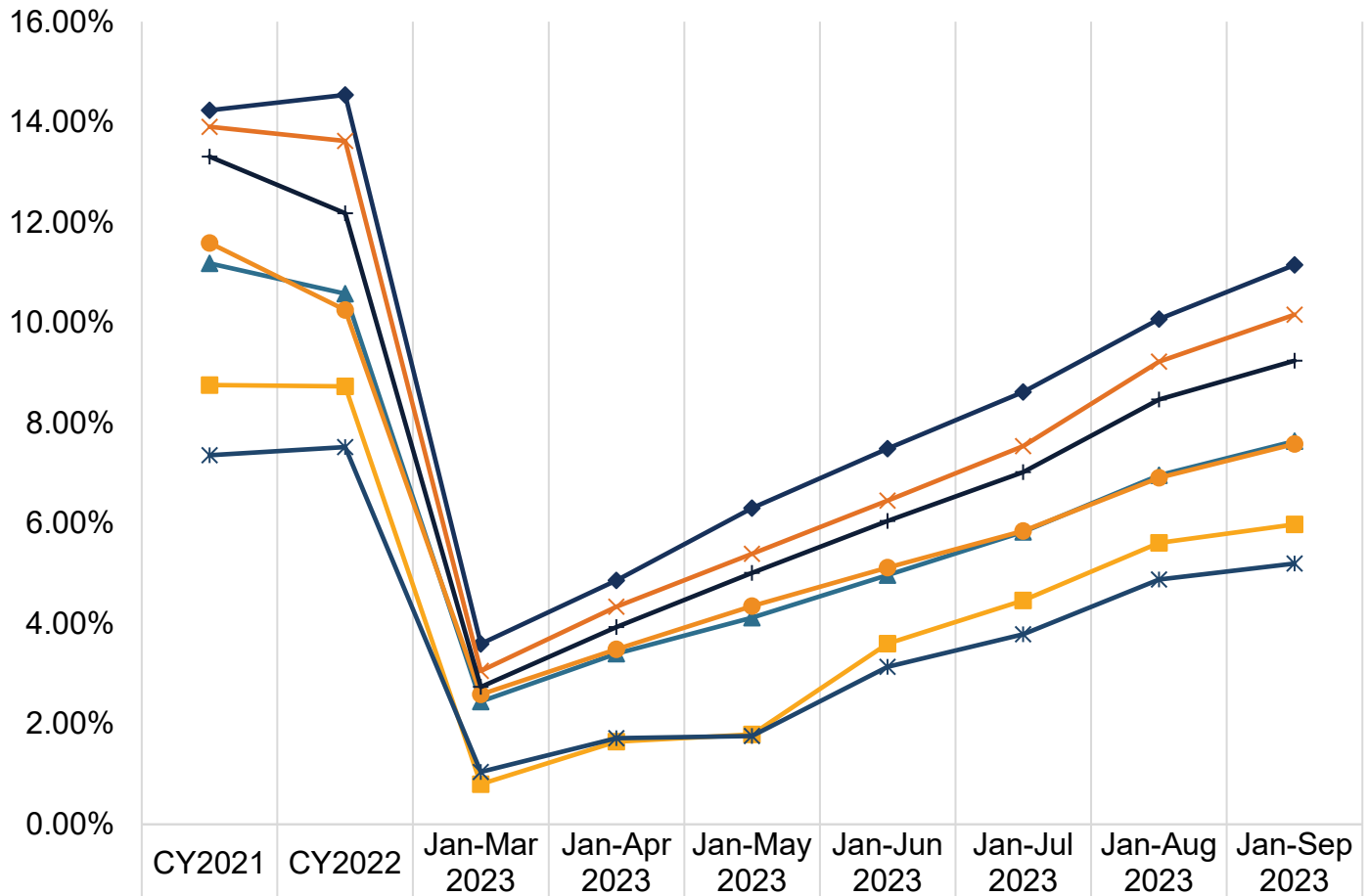
Annual Dental Visits



Utilization is calculated based on:

- **Numerator:** Number of members in the denominator who received any dental service (CDT D0100-D9999), including dental encounters at SNCs.
- **Denominator:** Number of members with at least 90 days continuous enrollment in the same plan during the measurement period.

Preventive



Utilization is calculated based on:

- **Numerator:** Number of members in the denominator who received any preventive dental service (CDT D1000-D1999), including dental encounters at SNCs.
- **Denominator:** Number of members with at least 90 days continuous enrollment in the same plan during the measurement period.

Data Source for all charts: FFS claims processed through the California Dental Medicaid Management Information System (CD-MMIS); DMC claims received via encounter data submission from the DMC plans; CPT 99188 and SNC claims processed through the California Medicaid Management Information System (CA-MMIS) as of November 9, 2023.

Rendering Provider Data - September 2023

Los Angeles and surrounding counties

Category	Count	Percent
FFS Only	6,095	83%
DMC and FFS	1,185	16%
DMC only	60	1%
Total	7,340	100%

Sacramento and surrounding counties

Category	Count	Percent
FFS Only	254	41%
DMC and FFS	262	42%
DMC only	107	17%
Total	623	100%

Data Source: Count of providers enrolled in September 2023 who also provided services within the last year in dental offices or SNCs within Los Angeles, Sacramento, and surrounding counties (Orange, Riverside, San Bernardino, Ventura, Yolo, Placer, and El Dorado). FFS provider counts provided by the Administrative Services Organization (ASO) and Provider Application and Validation for Enrollment (PAVE); DMC provider counts provided by DMC plans. Providers are matched with claims for date of services between October 1, 2022 and September 30, 2023, as of November 9, 2023, to identify the county the providers served.