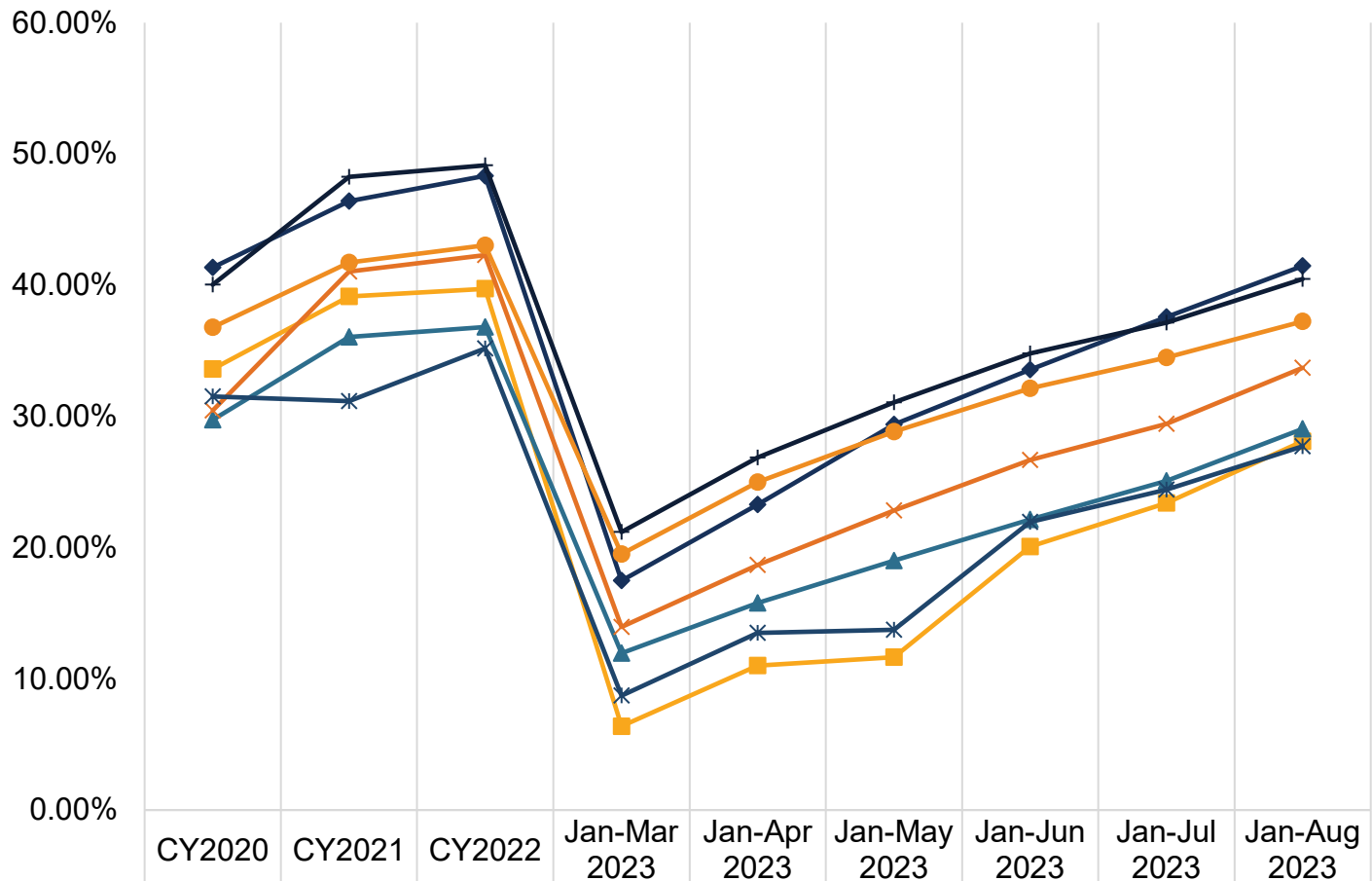


Dental Utilization in Children Ages 0-20

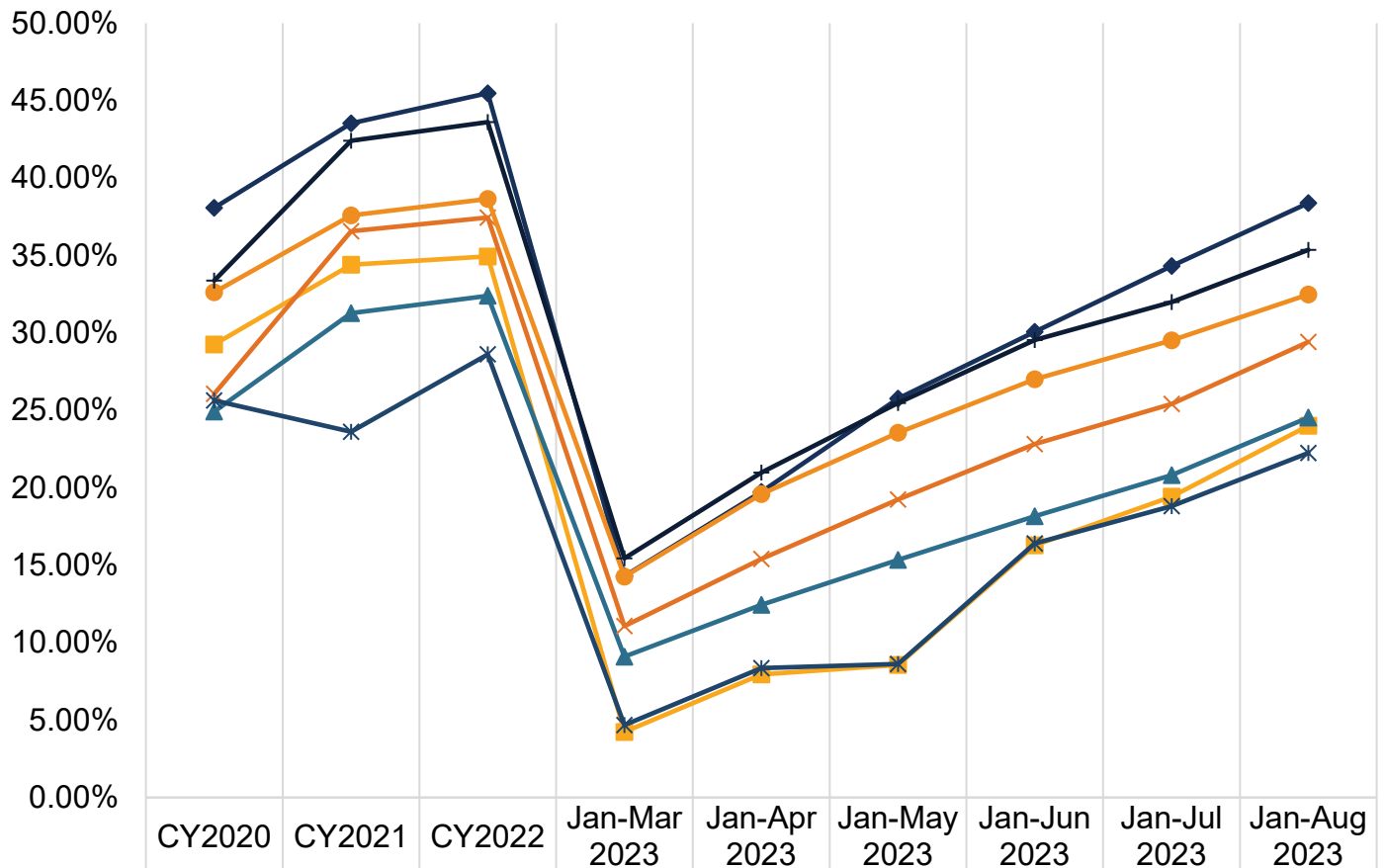
Annual Dental Visits



Utilization is calculated based on:

- **Numerator:** Number of members in the denominator who received any dental service (Current Dental Terminology (CDT) D0100-D9999 or Current Procedural Terminology (CPT) 99188), including dental encounters at safety net clinics (SNCs).
- **Denominator:** Number of members with at least 90 days continuous enrollment in the same plan during the measurement period.

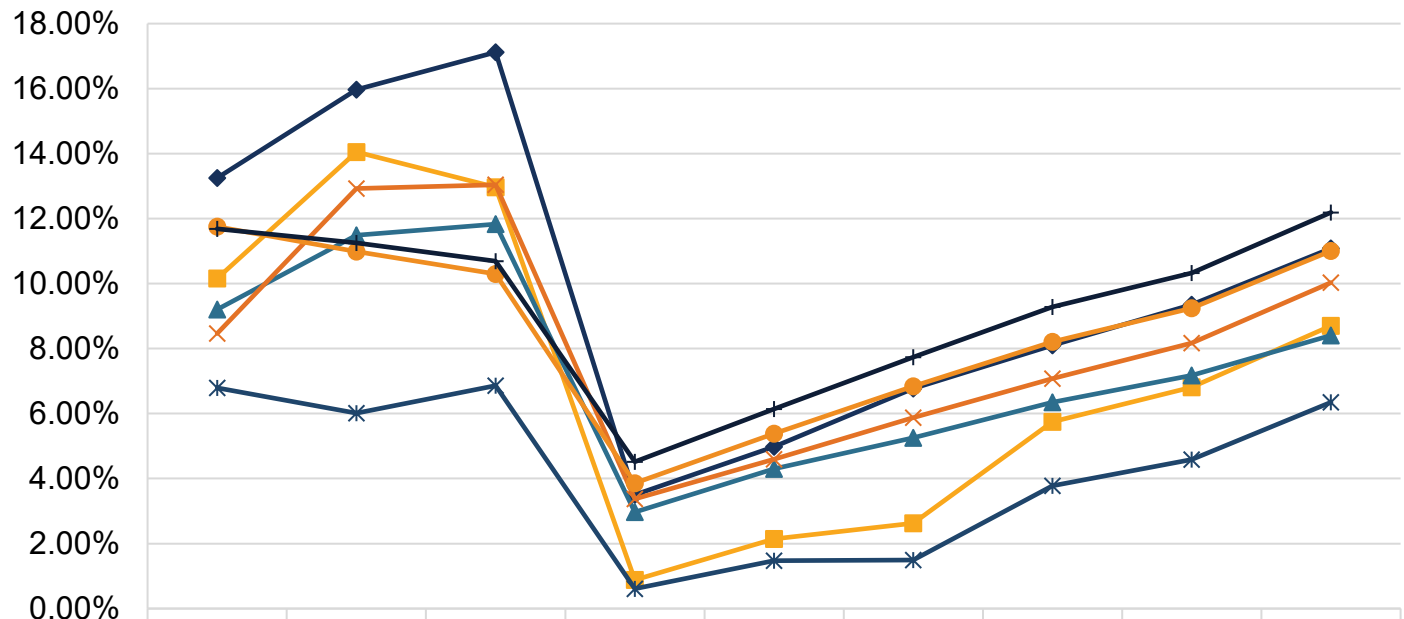
Preventive Services



Utilization is calculated based on:

- **Numerator:** Number of members in the denominator who received any preventive dental service (CDT D1000-D1999 or CPT Code 99188), including dental encounters at SNCs.
- **Denominator:** Number of members with at least 90 days continuous enrollment in the same plan during the measurement period.

Sealant For Ages 6-9

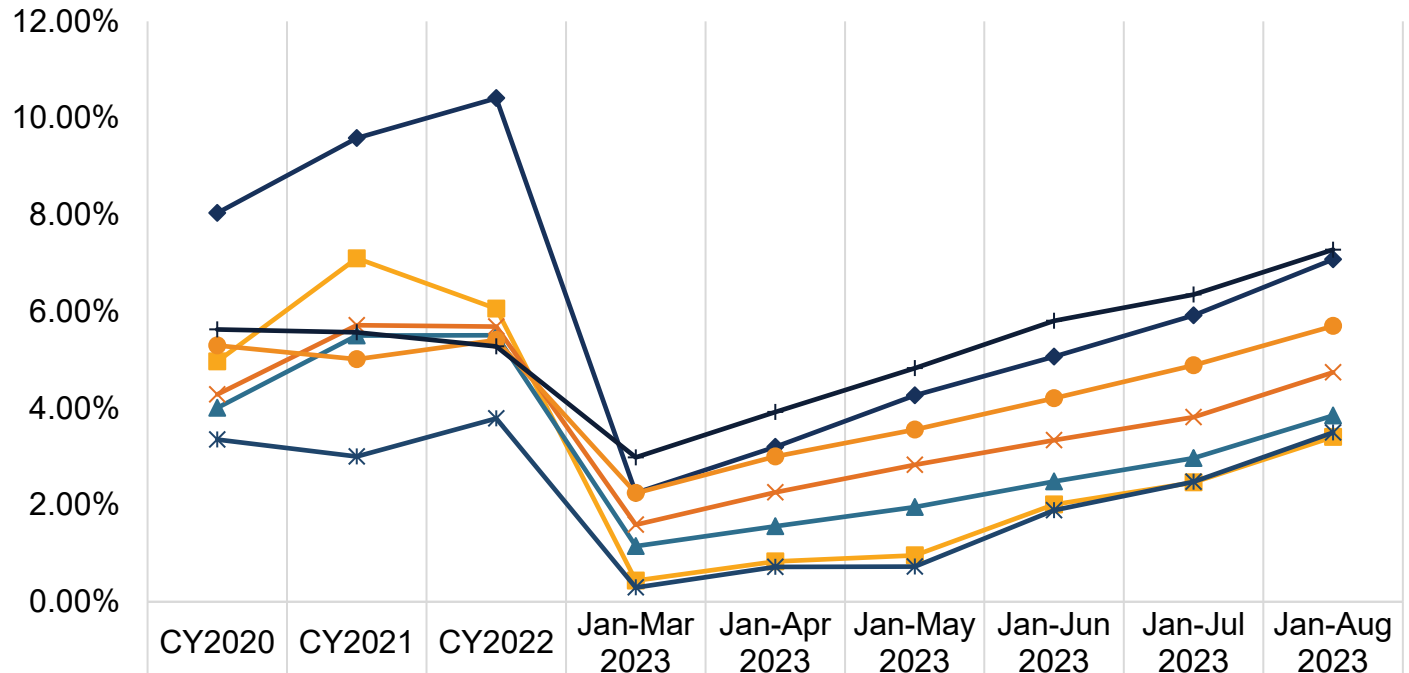


	CY2020	CY2021	CY2022	Jan-Mar 2023	Jan-Apr 2023	Jan-May 2023	Jan-Jun 2023	Jan-Jul 2023	Jan-Aug 2023
FFS	13.25%	15.97%	17.12%	3.50%	4.98%	6.77%	8.10%	9.35%	11.08%
Access LA	10.16%	14.05%	12.97%	0.88%	2.14%	2.63%	5.75%	6.81%	8.70%
Health Net LA	9.20%	11.48%	11.83%	2.97%	4.30%	5.26%	6.35%	7.18%	8.41%
Liberty LA	8.47%	12.92%	13.04%	3.37%	4.60%	5.88%	7.08%	8.17%	10.03%
Access Sac	6.79%	6.02%	6.86%	0.61%	1.47%	1.49%	3.78%	4.59%	6.35%
Health Net Sac	11.75%	10.99%	10.30%	3.86%	5.38%	6.84%	8.21%	9.24%	11.01%
Liberty Sac	11.69%	11.25%	10.69%	4.52%	6.14%	7.74%	9.28%	10.33%	12.19%

Utilization is calculated based on:

- **Numerator:** Number of members in the denominator who received a dental sealant (D1351) on a permanent first molar, including dental encounters at SNCs.
- **Denominator:** Number of members ages 6-9 with at least 90 days continuous enrollment in the same plan during the measurement period.

Sealant For Ages 10-14



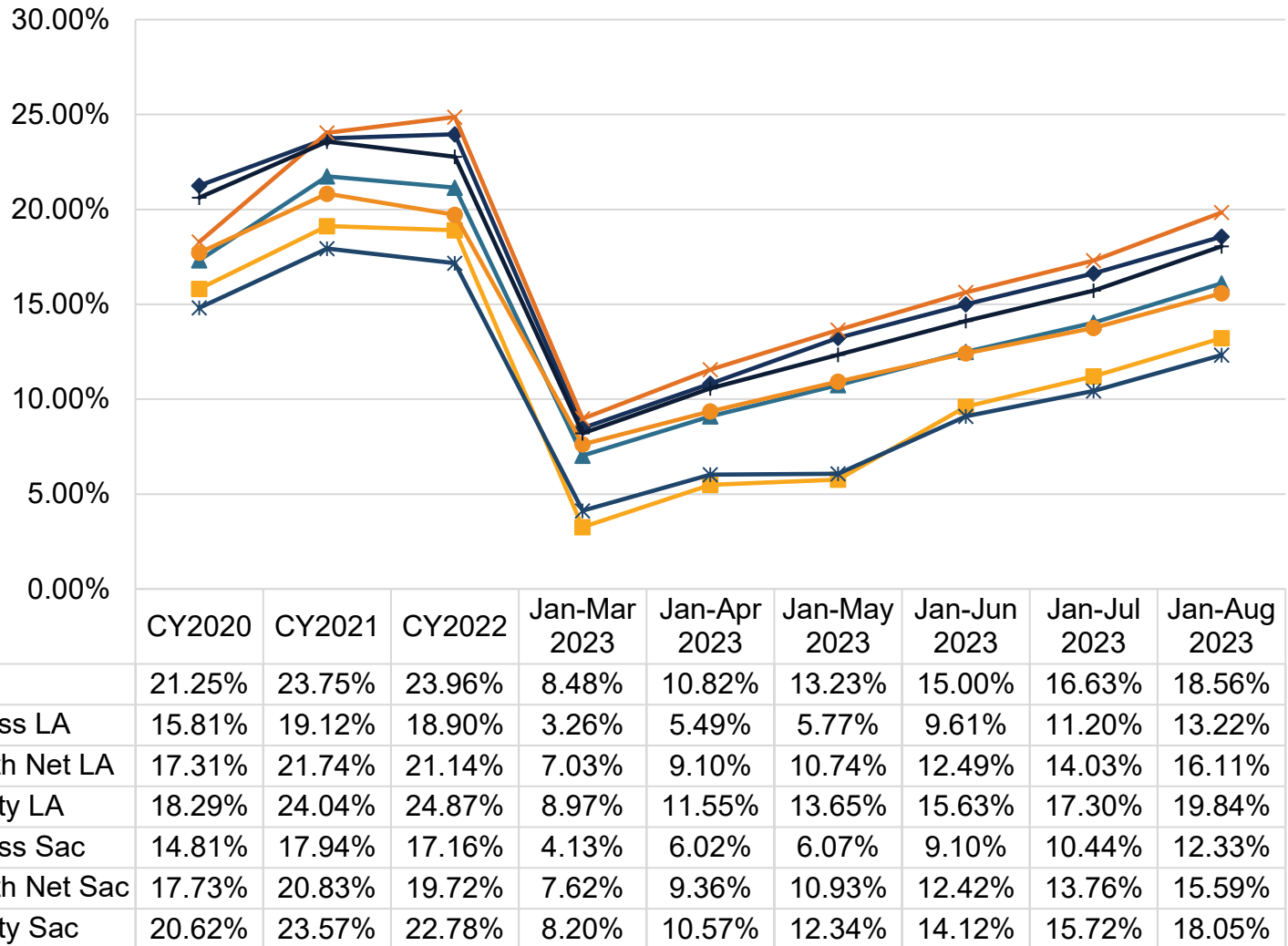
FFS	8.04%	9.59%	10.41%	2.25%	3.20%	4.27%	5.07%	5.92%	7.08%
Access LA	4.97%	7.10%	6.06%	0.44%	0.83%	0.96%	2.01%	2.47%	3.41%
Health Net LA	4.01%	5.51%	5.51%	1.15%	1.56%	1.96%	2.49%	2.97%	3.85%
Liberty LA	4.28%	5.72%	5.69%	1.59%	2.26%	2.83%	3.34%	3.82%	4.74%
Access Sac	3.35%	3.00%	3.79%	0.29%	0.72%	0.73%	1.89%	2.48%	3.50%
Health Net Sac	5.30%	5.02%	5.41%	2.25%	3.00%	3.56%	4.21%	4.89%	5.70%
Liberty Sac	5.63%	5.57%	5.28%	2.99%	3.92%	4.83%	5.81%	6.35%	7.28%

Utilization is calculated based on:

- **Numerator:** Number of members in the denominator who received a dental sealant (D1351) on a permanent second molar, including dental encounters at SNCs.
- **Denominator:** Number of members ages 10-14 with at least 90 days continuous enrollment in the same plan during the measurement period.

Dental Utilization in Adults Ages 21+

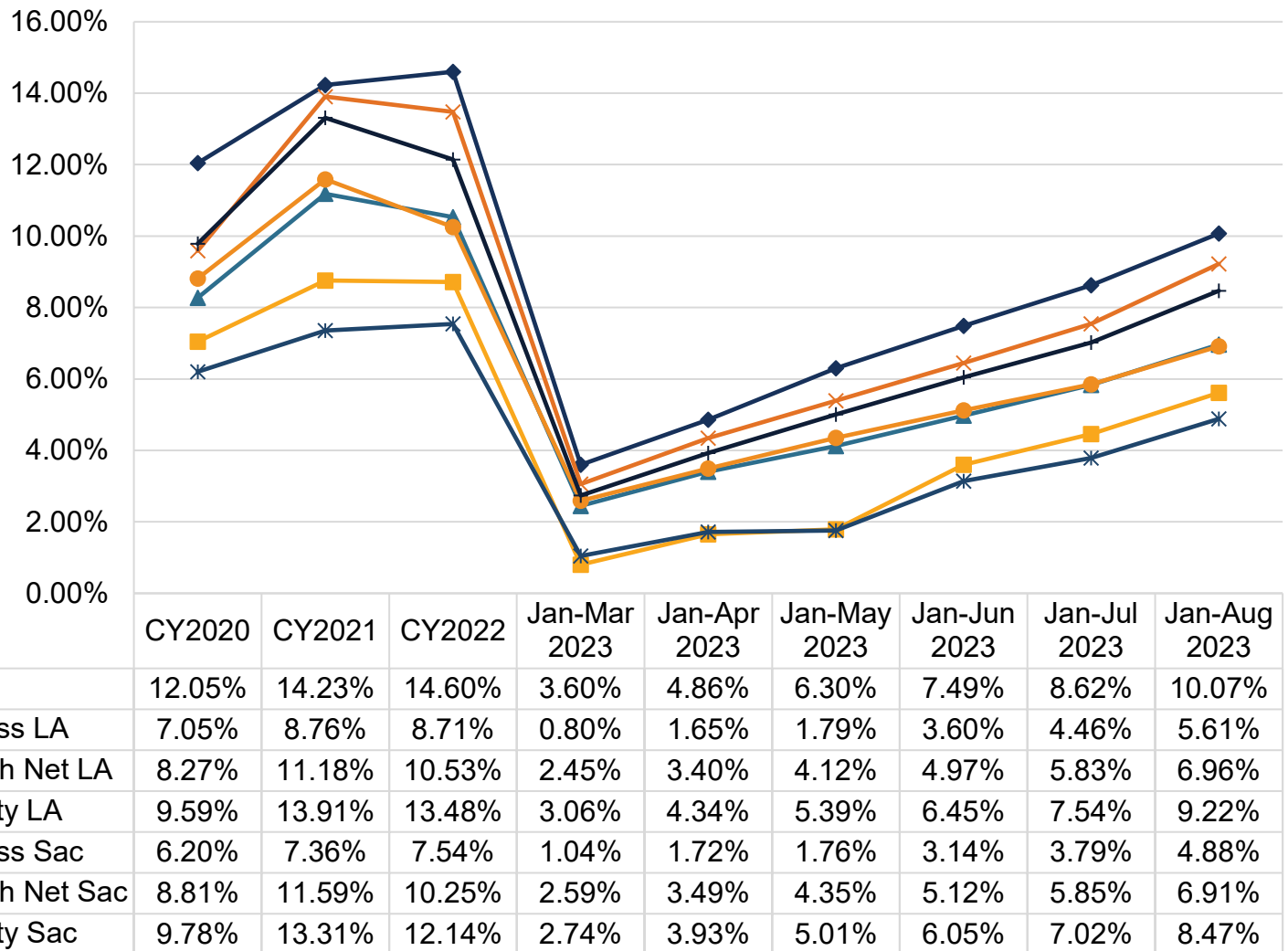
Annual Dental Visits



Utilization is calculated based on:

- **Numerator:** Number of members in the denominator who received any dental service (CDT D0100-D9999), including dental encounters at SNCs.
- **Denominator:** Number of members with at least 90 days continuous enrollment in the same plan during the measurement period.

Preventive Services



Utilization is calculated based on:

- **Numerator:** Number of members in the denominator who received any preventive dental service (CDT D1000-D1999), including dental encounters at SNCs.
- **Denominator:** Number of members with at least 90 days continuous enrollment in the same plan during the measurement period.

Data Source for all the Charts: FFS claims processed through the California Dental Medicaid Management Information System (CD-MMIS); DMC claims received via encounter data submission from the DMC plans; CPT 99188 and SNC claims processed through the California Medicaid Management Information System (CA-MMIS) as of October 25, 2023.

Rendering Provider Data August 2023

Los Angeles and surrounding counties

Category	Count	Percentage
FFS Only	6,051	83%
DMC and FFS	1,171	16%
DMC Only	63	1%
Total Unduplicated Providers	7,285	100%

Sacramento and surrounding counties

Category	Count	Percentage
FFS Only	246	40%
DMC and FFS	265	43%
DMC Only	111	18%
Total Unduplicated Providers	622	100%

Data Source: Count of providers enrolled in August 2023 who also provided services within the last year in dental offices or SNCs within Los Angeles, Sacramento, and surrounding counties (Orange, Riverside, San Bernardino, Ventura, Yolo, Placer, and El Dorado). FFS provider counts provided by the Administrative Services Organization (ASO) and Provider Application and Validation for Enrollment (PAVE); DMC provider counts provided by DMC plans. Providers are matched with claims for date of services between September 1, 2022, and August 31, 2023, as of October 20, 2023, to identify the county the providers served.