

Concepts for Housing Work Group

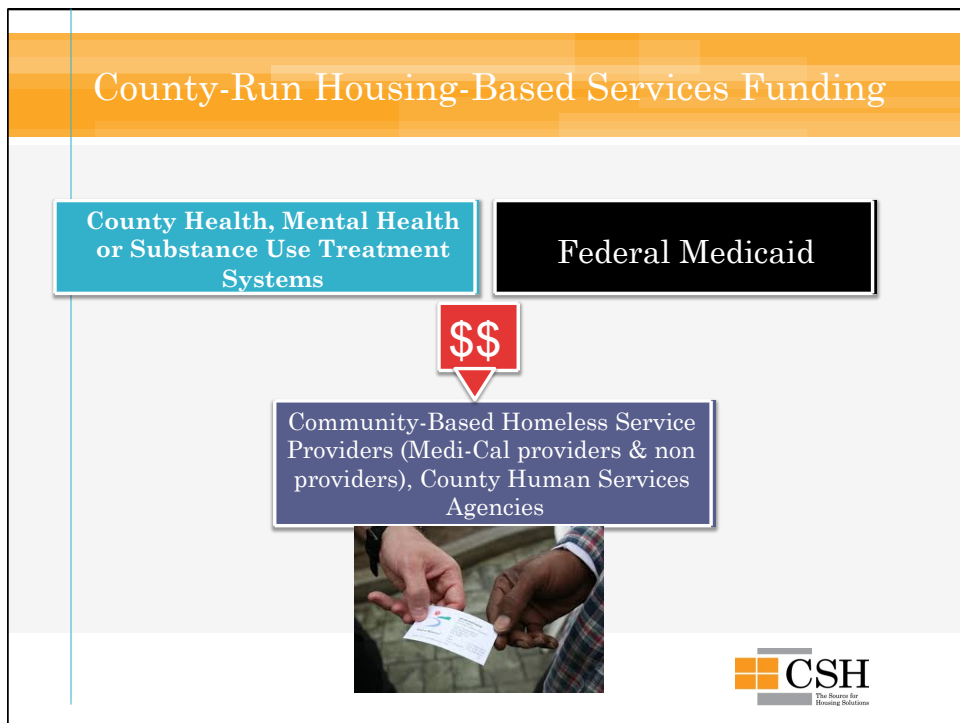
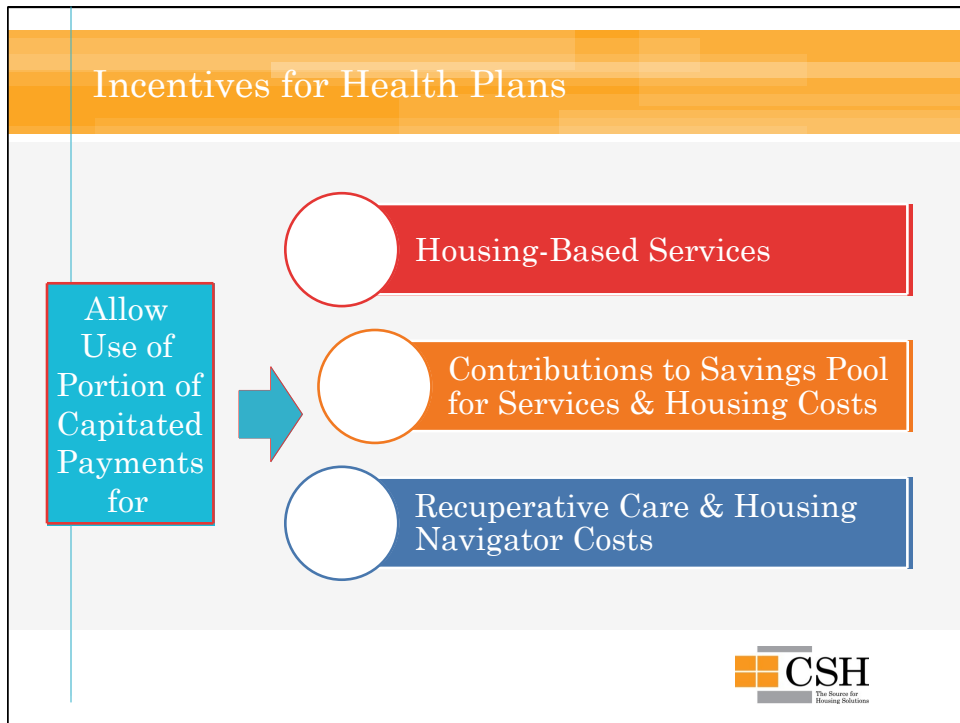
Sharon Rapport, CSH
January 28, 2015

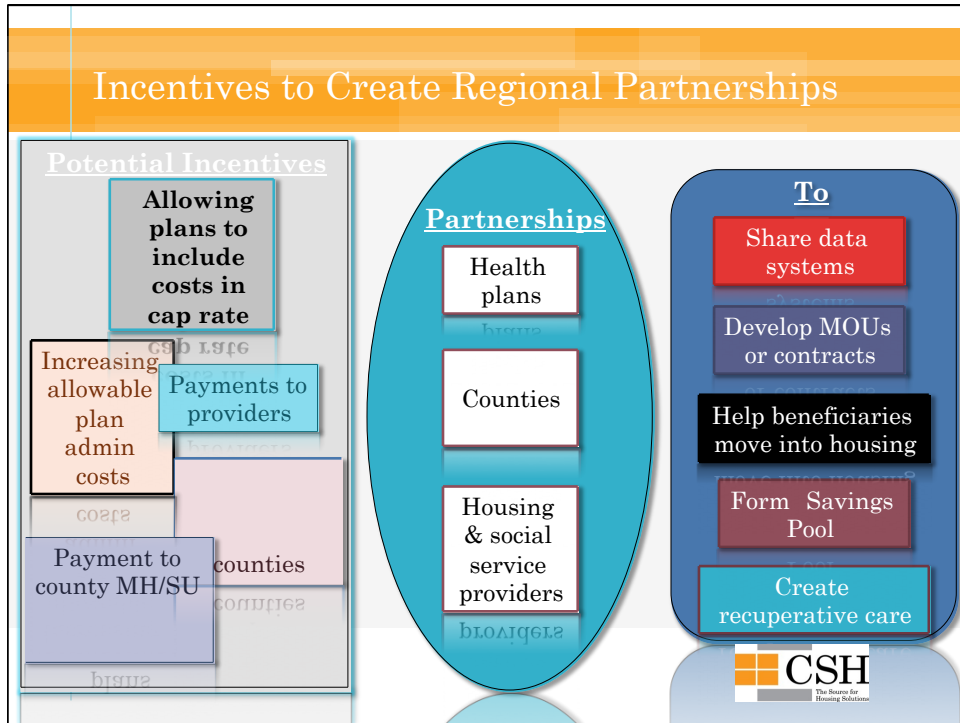


Eligible Populations

Nursing Facility Residents	No identified need to remain in nursing facility, and	
	An extended stay	Not admitted solely for purposes of rehabilitation and No discharge plan
High-Cost Homeless Beneficiaries	Beneficiaries with a <u>combination</u> of chronic medical, mental health, and/or substance use disorders, and who have severe functional limitations, defined as—	
		Meeting the HUD definition of chronic homelessness, Residents of permanent supportive housing who met the HUD definition of chronic homelessness when moving into housing,
		Meeting the HUD definition of homelessness and— <ul style="list-style-type: none"> • Have incurred 5 or more visits to the emergency department over the last 12 months or 8 or more visits over the previous 24 months • Have incurred at least 3 inpatient admissions within 12 months, at least 45 days inpatient (cumulative or single) in 12 months, or at least 5 admissions within 24 months OR Experiencing periods of homelessness and institutionalization, including inpatient hospitalization, institutes of mental disease, or incarceration , of at least 30 days over the previous 24 months.









- ## Challenges/Questions for Work Group
- State or regional savings pool?
 - What provider qualifications should the State establish?
 - What other parameters are necessary for using savings pool and incentive payments?
 - What source of money should be used for incentive payments?
 - How can we best leverage savings pool money to access units on a sustainable basis and foster capital development?
- CSH
The Institute for Housing Solutions

Sharon.Rapport@csh.org
(323) 243-7424 (c)
(213) 623-4342, x18 (o)

