

LEGENDS

Reference these keys to navigate and interpret the visual symbols and colors within this document.

TYPES OF RESIDENTIAL SETTINGS



Footnotes Key - Department Oversight and Licensing for Residential Settings
 1. California Department of Health Care Services (DHCS)
 2. California Department of Social Services (CDSS)
 3. California Department of Public Health (CDPH)

FUNDING CATEGORIES

- Infrastructure funding** is financial support designated for the development, expansion, or improvement of physical facilities and infrastructure.
- Operational funding** refers to financial resources allocated to cover the day-to-day expenses of running programs and services.

Health Care Services funding refers to financial resources allocated specifically for the delivery of direct services to individuals and families.

Housing Services funding include supportive housing services, interim housing services, financial assistance and housing-related wraparound supportive services.

TYPES OF NON-RESIDENTIAL SETTINGS

Outpatient services offer **treatment and support** for substance use disorders (SUD) or mental health conditions **without requiring overnight stays**, including programs like standard and intensive outpatient, partial hospitalization, counseling, medication-assisted treatment, and peer support.

OUTPATIENT FACILITIES

- Behavioral Health Integrated Outpatient Center
- Community Mental Health Clinic/Outpatient Clinic
- Community Wellness/Youth Prevention Center
- Hospital-Based Outpatient Treatment/Detox
- Intensive Outpatient Treatment (IOT)
- Narcotic Treatment Program (NTP)
- Office-Based Opioid Treatment Programs (OBOT)
- Outpatient Treatment for Substance Use Disorder
- Partial Hospitalization Program
- School-Linked Health Center

CRISIS SERVICES

- Behavioral Health Urgent Care (BHUC)/Mental Health Urgent Care (MHUC)
- Crisis Stabilization Units (CSU)
- Mobile Crisis Units
- Sobering Centers
- 988 Lifeline

*This list is defined by eligible Behavioral Health Continuum Infrastructure Program (BHCIP) facility types from past and current funding rounds.

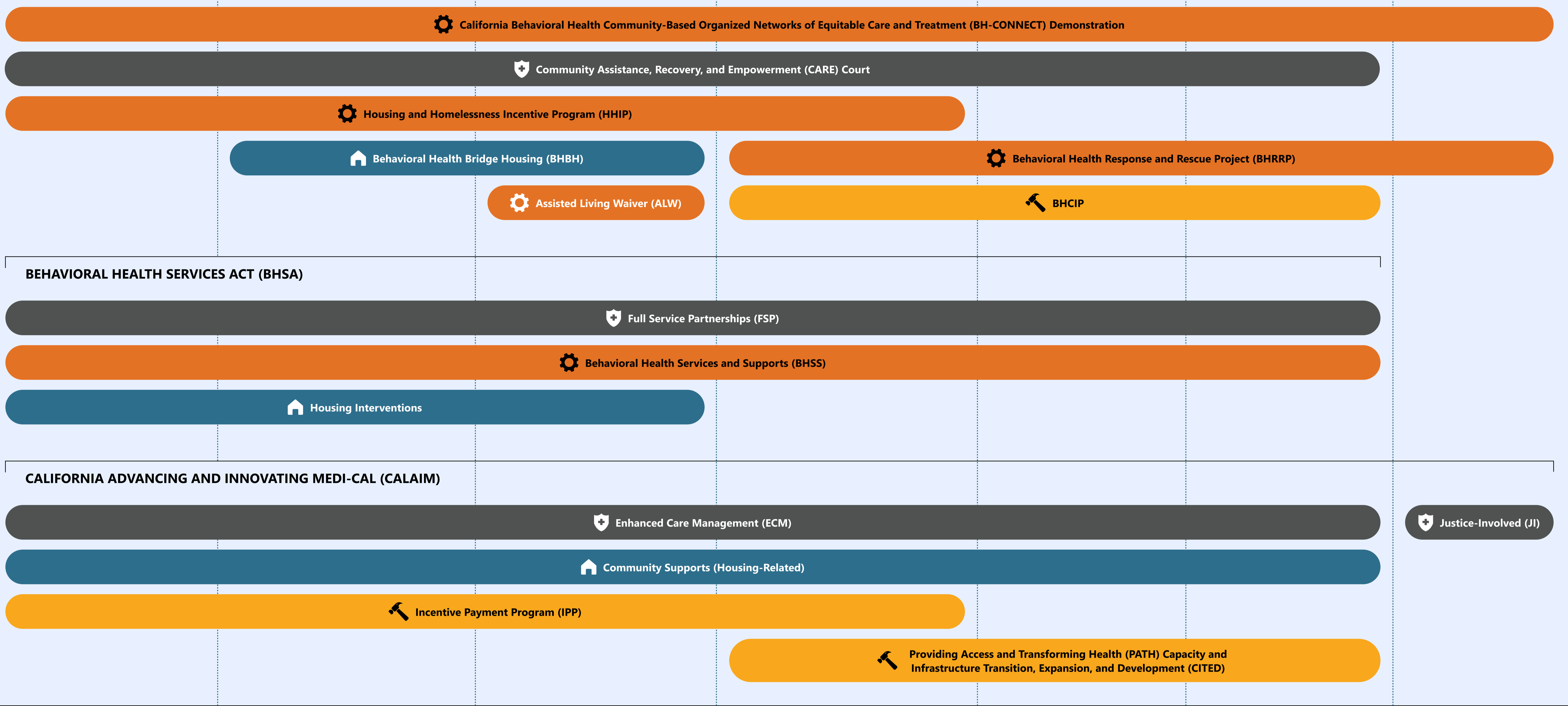
TYPES OF RESIDENTIAL SETTINGS

Long-term living environments offering varying levels of care and support, including single-family homes, apartments, and specialized facilities, aimed at providing safe, stable, and supportive housing.

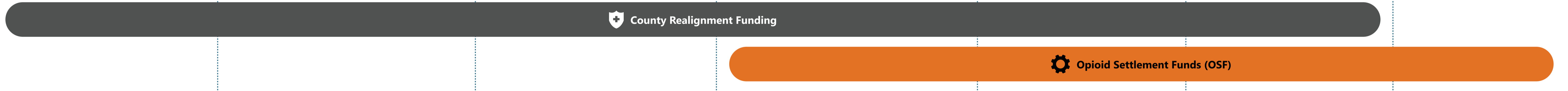
HOUSING SETTINGS	INTERIM HOUSING SETTINGS	ASSISTED LIVING	COMMUNITY RESIDENTIAL TREATMENT SETTINGS	SUB-ACUTE SETTINGS	ACUTE SETTINGS	JUSTICE-INVOLVED SYSTEM
<ul style="list-style-type: none"> Accessory Dwelling Units (ADU)/Junior Accessory Dwelling Units (JADUs) Apartments Master Lease Housing Permanent Supportive Housing (PSH) Project-Based Scattered Site Supportive Housing Public Subsidized Housing Recovery Residence/Sober Living Environments Rental Assistance Programs Shared Housing Single/Multi-Family Homes Single-Room Occupancy Units 	<ul style="list-style-type: none"> Congregate Settings with Small Number Per Room (not Dormitory) Emergency Stabilization Units Hotel/Motels Peer Supported Housing/Peer Run Recovery Residences Room and Board Homes Recovery Residence/Sober Living Environments Reception Center Re recuperative Care Short-Term Post-Hospitalization Housing Single-Room Occupancy Units Tiny Homes/Emergency Sleeping Cabins Transitional/Bridge Housing (non-congregate) 	<ul style="list-style-type: none"> Adult Residential Facilities (ARF)² Adult Residential Facilities (ARF) for Persons with Special Health Care Needs² Community Crisis Homes² Enhanced Behavioral Support Homes² Licensed Board and Care Homes/Room and Board Residences² License exempt Board and Care Facilities² Residential Care Facilities for the Elderly (RCFE)² Residential Care Facilities for the Chronically Ill² 	<ul style="list-style-type: none"> Adolescent/Adult Residential SUD Treatment Facilities¹ Children's Crisis Residential Programs (CCRP)² Community Residential Treatment System (CRTS)/Social Rehabilitation Program (SRP)² Community Treatment Facility (CTF)² Peer Supported Housing & Peer Run Recovery Residences Perinatal Residential SUD Facilities¹ Psychiatric Residential Treatment Facility (PRTF)¹ Peer Respite Short-Term Therapeutic Residential Treatment Program (STRTP)² Social Rehabilitation Facilities² (SRF) 	<ul style="list-style-type: none"> Community Residential Treatment System (CRTS)/Social Rehabilitation Program (SRP)² Mental Health Rehabilitation Center (MHRC)¹ Skilled Nursing Facility/Special Treatment Program (SNF/STP)² 	<ul style="list-style-type: none"> Acute Psychiatric Hospital³ Chemical Dependency Recovery Hospital³ General Acute Care Hospital (GACH)³ Psychiatric Health Facility (PHF)¹ State Psychiatric Hospital³ 	<ul style="list-style-type: none"> Jail Juvenile Detention Facility Prison
<p>ELIGIBLE FOR OUTPATIENT AND CRISIS SERVICES</p>	<p>ELIGIBLE FOR OUTPATIENT AND CRISIS SERVICES</p>	<p>ELIGIBLE FOR OUTPATIENT AND CRISIS SERVICES</p>	<p>ELIGIBLE FOR OUTPATIENT AND CRISIS SERVICES</p>	<p>ELIGIBLE FOR OUTPATIENT AND CRISIS SERVICES</p>	<p>ELIGIBLE FOR OUTPATIENT AND CRISIS SERVICES</p>	<p>ELIGIBLE FOR OUTPATIENT AND CRISIS SERVICES</p>

FUNDING SOURCES FOR RESIDENTIAL SETTINGS

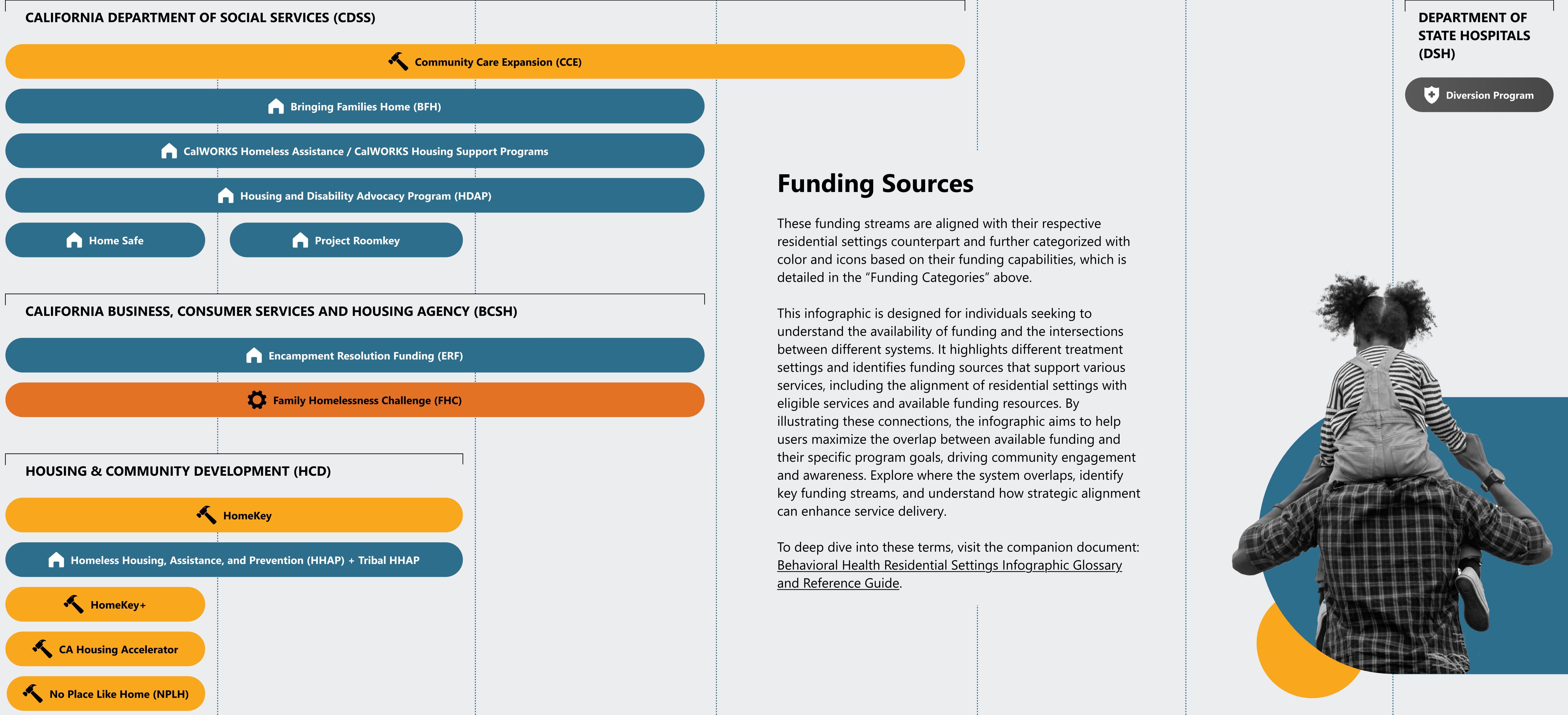
DHCS-PROVIDED FUNDING



COUNTY-DIRECTED FUNDING



OTHER FUNDING



Funding Sources

These funding streams are aligned with their respective residential settings counterpart and further categorized with color and icons based on their funding capabilities, which is detailed in the "Funding Categories" above.

This infographic is designed for individuals seeking to understand the availability of funding and the intersections between different systems. It highlights different treatment settings and identifies funding sources that support various services, including the alignment of residential settings with eligible services and available funding resources. By illustrating these connections, the infographic aims to help users maximize the overlap between available funding and their specific program goals, driving community engagement and awareness. Explore where the system overlaps, identify key funding streams, and understand how strategic alignment can enhance service delivery.

To deep dive into these terms, visit the companion document: [Behavioral Health Residential Settings Infographic Glossary and Reference Guide](#).

