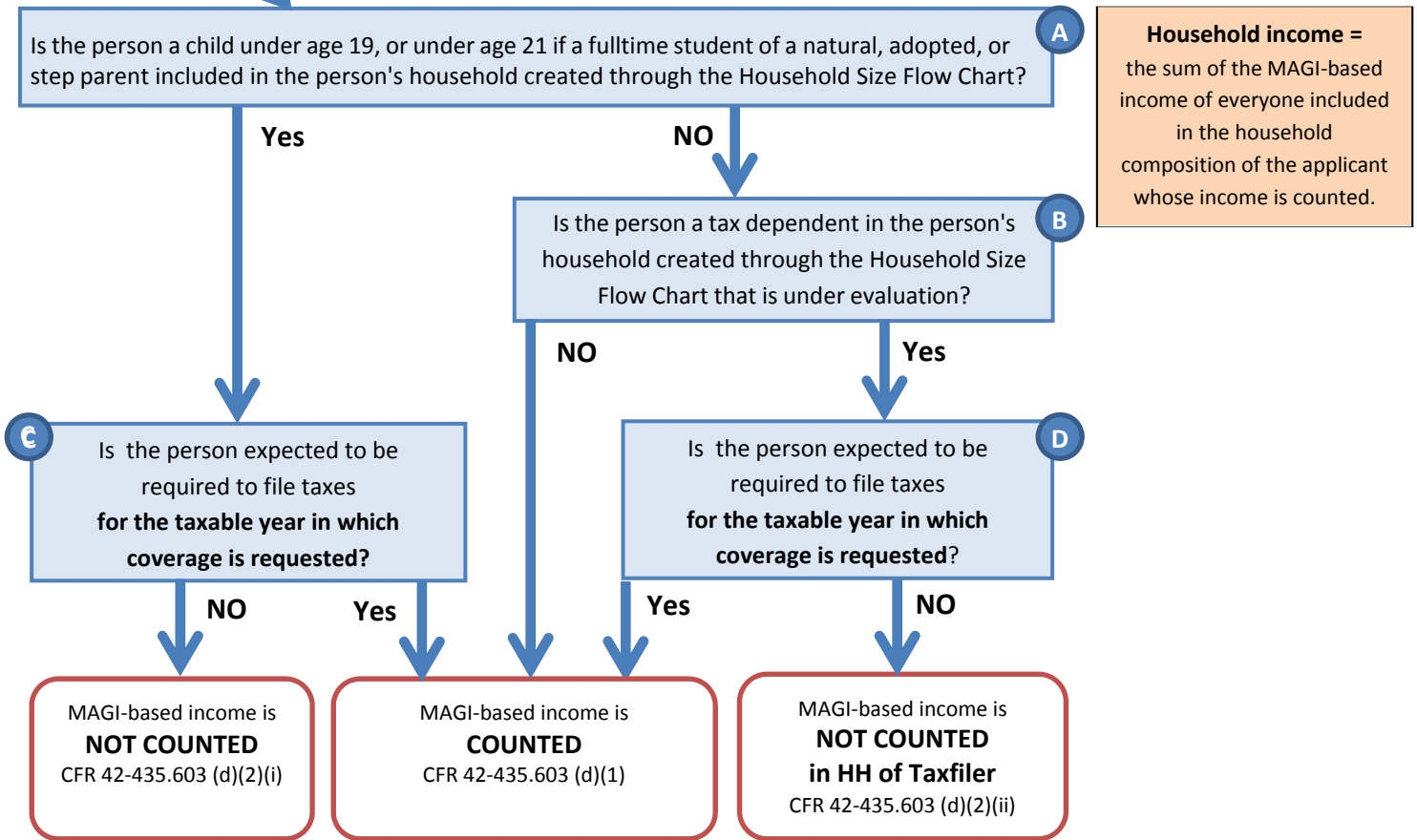


MAGI-Based Medi-Cal

Whose Income Counts in the Income Calculation?

**START
HERE**

- ✓ Pre-condition: Household composition for the applicant has been identified.
- ✓ Process for each **person** in each **household** that was created through the Household Size Flow Chart.
- ✓ Use the outcome table at the bottom of the page to record the outcome for each person



Household income =
the sum of the MAGI-based income of everyone included in the household composition of the applicant whose income is counted.

Household Of:	Person		Count?	Person		Count?	Person		Count?
	No	Yes	No	Yes	No	Yes	No	Yes	No