

# Department of Health Care Services Medi-Cal Behavioral Health Policy Division

# **Assisted Outpatient Treatment (AOT)**

## **2025 Outcome Evaluation Webinar**



# AOT Annual Reporting

## » Purpose

- » In accordance with the Welfare & Institutions Code (W&I) 5348(d), the Department of Health Care Services (DHCS) is required to annually collect programmatic data outcomes for the required elements from participating AOT counties.
- » DHCS annually reviews the data collection methodology and any limitations for the Laura's Law Legislative Report in order to enhance and further standardize the data collection process.

# Agenda

- » 2024 Report Highlights
- » Data Collection Tools
- » Data Dictionary
- » Tools and Resources
- » Training and Technical Assistance
- » Questions

# 2024 AOT Report Highlights

## Key Outcomes

### Areas of Increase

- » Employment and/or educational services
- » Social Functioning

### Areas of Decrease

- » Homelessness
- » Hospitalization
- » Victimization
- » Violent Behavior
- » Substance Use
- » Contact with Law Enforcement

# 2024 AOT Reports Highlights Cont'd

- » Methods of outreach and engagement
  - » Collaboration with community partners
- » Partnership and Services
  - » Provided connections with community-based organizations
- » Areas of Cost Reduction
  - » Utilized intervention methods and voluntary support

# Outcome Evaluation Overview

- » Survey Monkey distribution
- » Standardized questions

68. Which of the following social services (public benefits) does your county provide? *Check all that apply*

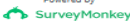
- Supplemental Security Income (SSI)
- State Supplementary Program (SSP)
- Cash Assistance Program for Immigrants (CAPI)
- CalWORKS
- California Food Assistance Program
- In-Home Supportive Services Program
- CalFresh
- Other

69. How many participants did the AOT program assist in obtaining vital records or documentation?

70. What type of vital records or documentation did your county assist participants in obtaining? *Check all that apply*

- Identification Card
- Birth Certificate
- Social Security Card
- Replace insurance card
- Other (please specify)

Prev Continue

Powered by  
 SurveyMonkey  
See how easy it is to create surveys and forms.

# Outcome Evaluation Overview

- » Distribution
  - » Formal Notification of invitation
- » Respondents
  - » All implemented counties
  - » Single respondent per county
- » Timeline
  - » Collection period SFY **July 1 - June 30**
  - » Submitted annually by **October 1**
- » Guidance
  - » Tools and Resources



# Outcome Evaluation Design

- » 2025 Evaluation Enhancements
  - » Capturing AOT & CARE Collaboration

## AOT Evaluation


### AOT and CARE Program Collaboration

Use the textboxes to provide responses for the following questions. Click Next to move to the next section.

8. What, if any, AOT programmatic or procedural changes have been made as a result of the Community Assistance, Recovery, and Empowerment (CARE) Act implementation?

9. Please provide a description of how the AOT program team collaborates with the CARE Act program team, including but not limited to, client outreach/engagement and referrals.

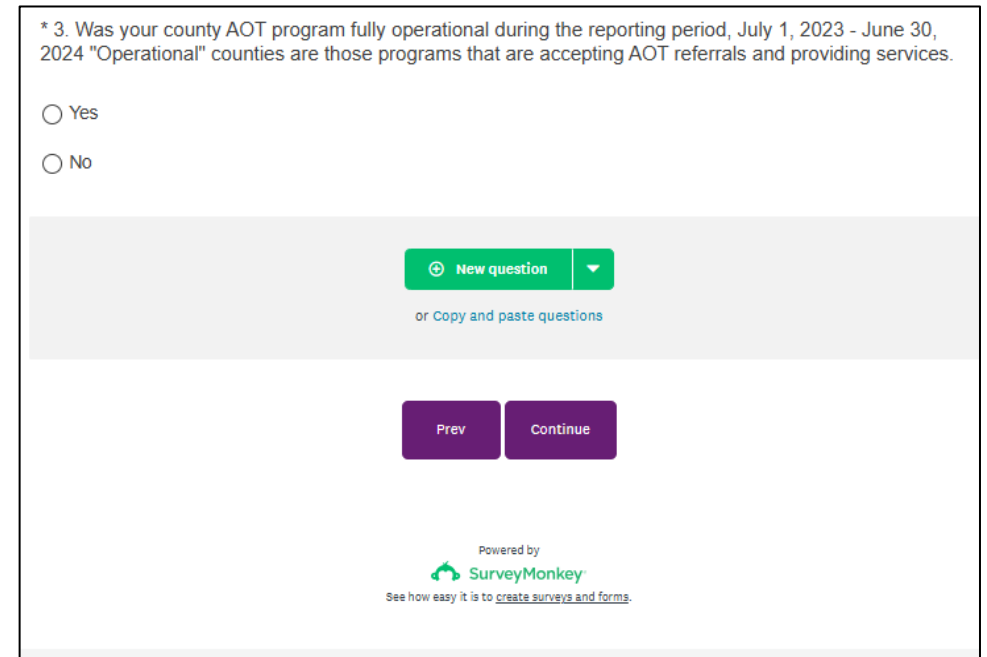
[Prev](#) [Continue](#)

Powered by  
 SurveyMonkey  
[See how easy it is to create surveys and forms.](#)

# Outcome Evaluation Design

## » Navigation

- » Respondents can save and return until submission date
- » Responses are saved page by page
- » Instructions provided throughout
- » Branching questions determine the information requested



\* 3. Was your county AOT program fully operational during the reporting period, July 1, 2023 - June 30, 2024 "Operational" counties are those programs that are accepting AOT referrals and providing services.


Yes

No

[New question](#) ▼

or Copy and paste questions

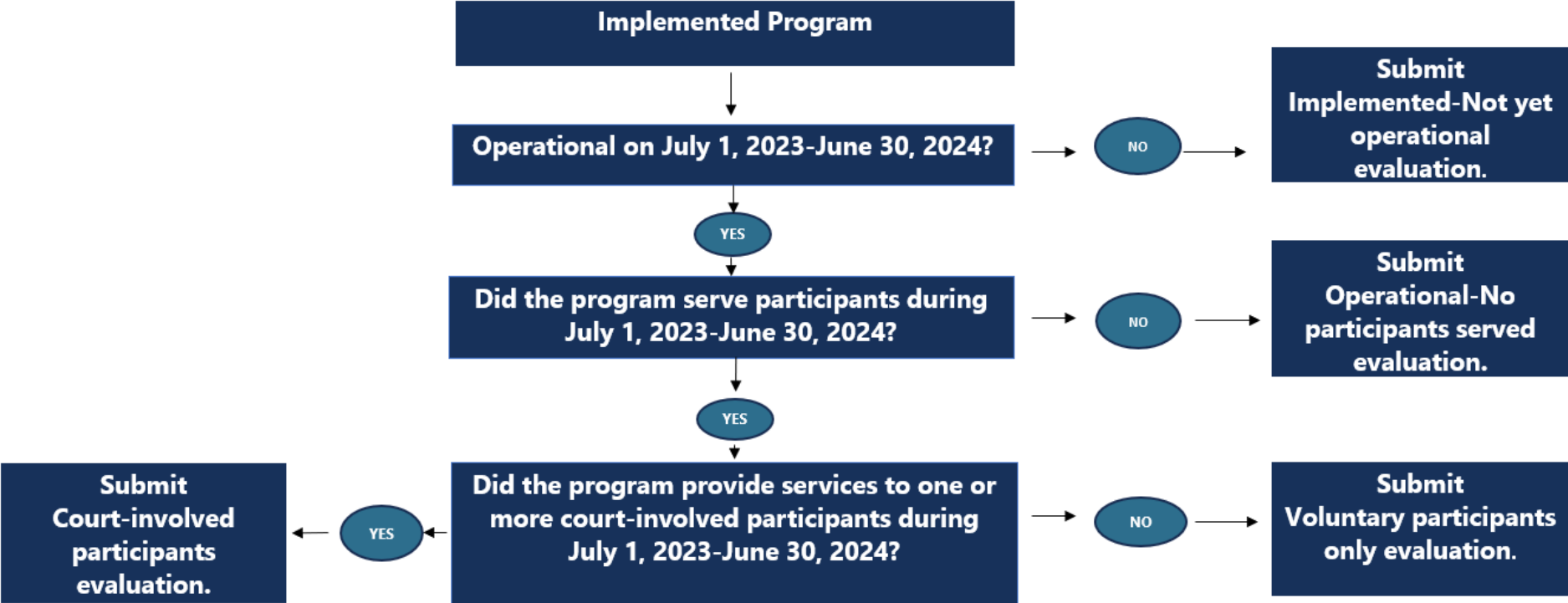
[Prev](#) [Continue](#)

Powered by  
 SurveyMonkey  
See how easy it is to [create surveys and forms](#).

# Data Collection Tools

- » DHCS provides Data Collection Tools to aid counties in preparing the requested information.
- » Versions include:
  - » DHCS AOT Data Collect Tool Implemented Not Yet Operational
  - » DHCS AOT Data Collect Tool Operational No Participants Served
  - » DHCS AOT Data Collect Tool Voluntary Participants Only
  - » DHCS AOT Data Collect Tool Court-Involved Participants

# Data Collection Tools



# AOT Data Dictionary

- » Corresponding question numbers listed alongside terms
- » Identified data collection format
- » Refined descriptions and examples

| Assisted Outpatient Treatment (AOT) Data Dictionary |             |          |   |                                    |  |
|---|-------------|----------|---|------------------------------------|--|
| Term  | Statute     | Question | Description   | Data Collection Format             | Examples   |
| Type of Treatment                                   | 5348(d)(10) | 10,11    | All services included in court- mandated treatment plan and/or provided to an AOT participant for the duration of enrollment. | Select from treatment types listed | This may include, but is not limited to, case management, medication management, outreach support, housing support, life skills support, substance use disorder treatment, and rehabilitation, participant/ group counseling, etc. |

# Reporting Standards

- » Privacy and confidentiality
  - » Aggregate level data reporting
  - » Privacy protocols in place by Survey Monkey
  - » DHCS Data De-identification Guidelines (DDG)
- » Multiple metrics and/or assessments may be utilized in fulfilling required outcomes
- » Counties must adhere to the AOT Data Dictionary for completion of the Outcome Evaluation

# Reporting Standards Cont'd

| Reporting Terminology                      | Timeframe  |
|--|--|
| Pre-enrollment                             | Not to exceed 12 months prior to entering program      |
| During enrollment                          | The duration between court order and end of enrollment |
| Post-enrollment                            | As available   |
| At the time of enrollment                  | Date of court order                                    |
| At the end of initial petition period      | 6 months (180 days) from date of court order           |
| At the time of discharge/end of enrollment | Date of "Completion" or "Termination" from AOT program |

# Tools and Resources

- » Behavioral Health Information Notice (BHIN) [22-035](#)
- » [AOT Data Dictionary](#)
- » Survey Monkey Technical Assistance
  - » Visit the [Help Center](#)
- » [DHCS Data De-identification Guidelines \(DDG\)](#)
- » Data Collection Tool (PDF versions)



# Reminders

- » Carefully read instructions as you navigate through the Evaluation
- » The reporting period is **July 1 – June 30**
- » Submit Outcome Evaluations by **October 1**
- » Outcome Evaluations must be submitted through Survey Monkey
- » One respondent- single submission per county

# Training and Technical Assistance

- » For assistance with AOT implementation and reporting requirements, please contact [DHCSAOT@dhcs.ca.gov](mailto:DHCSAOT@dhcs.ca.gov)
- » DHCS AOT webpage
  - » <https://www.dhcs.ca.gov/formsandpubs/Pages/Assisted-Outpatient-Treatment-Program.aspx>

# Questions?

