

DEPARTMENT OF HEALTH SERVICES

714/744 P Street
P.O. Box 942732
Sacramento, CA 94234-7320
(916) 657-2941



October 30, 2000

MEDI-CAL ELIGIBILITY PROCEDURES MANUAL LETTER NO.: 231

TO: All Holders of the Medi-Cal Eligibility Procedures Manual

5S--SECTION 1931(b) PROGRAM

Enclosed is an updated page correcting an error on Page 10 of the 1931(b) Chart 1. The diamond shaped box in the lower left section of the chart has been changed to "MBU Sneeze Property Eligible?" rather than "MBU Sneeze Income Eligible?".

Filing Instructions:

Remove Pages:

Article 5S
Article 5S-9 and 10

Insert Pages:

Article 5S
Article 5S-9 and 10

If you have any questions, please contact Margie Buzdas of my staff at (916) 657-0726.

Sincerely,

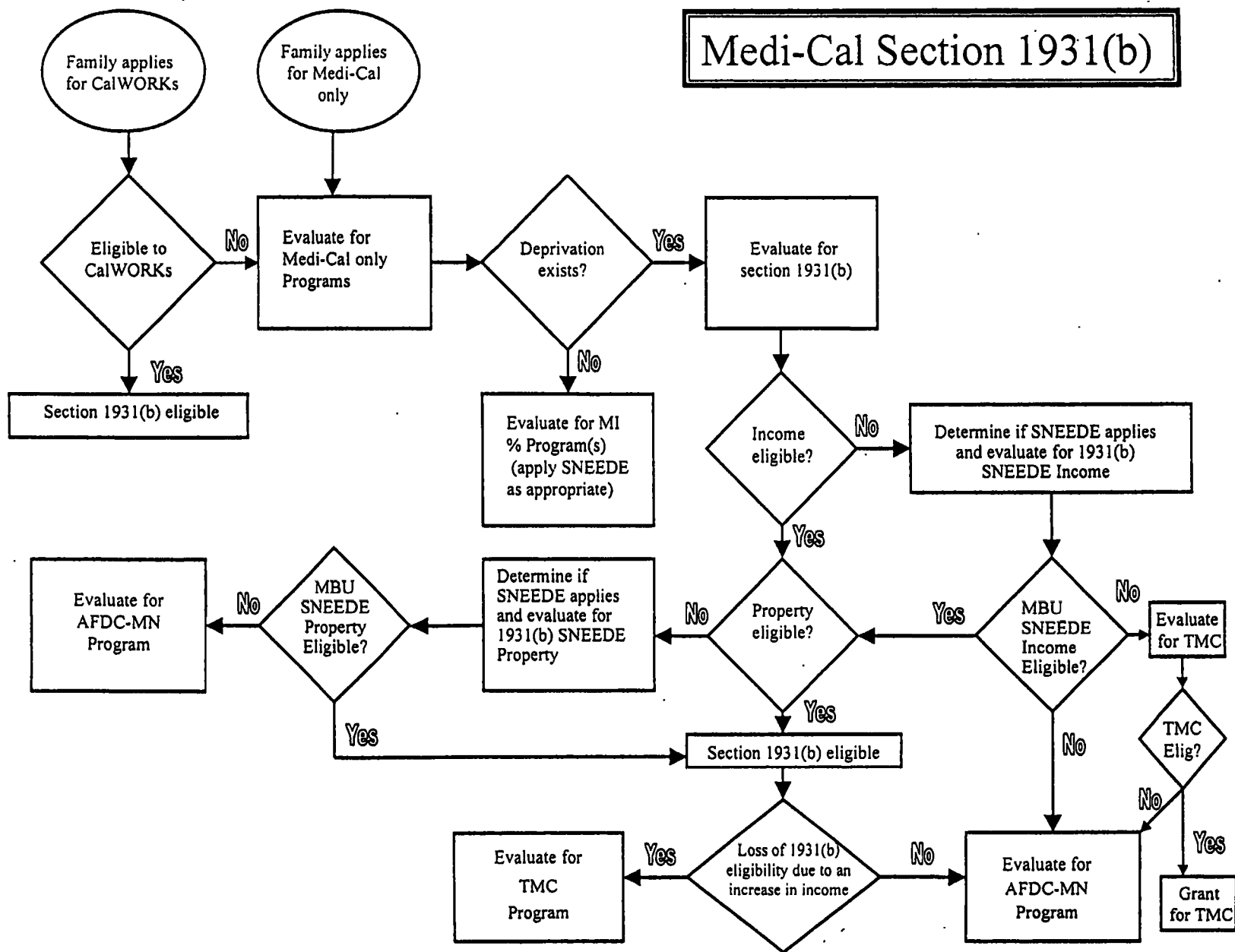
Original signed by

Glenda Arellano, Acting Chief
Medi-Cal Eligibility Branch

Enclosures



Medi-Cal Section 1931(b)

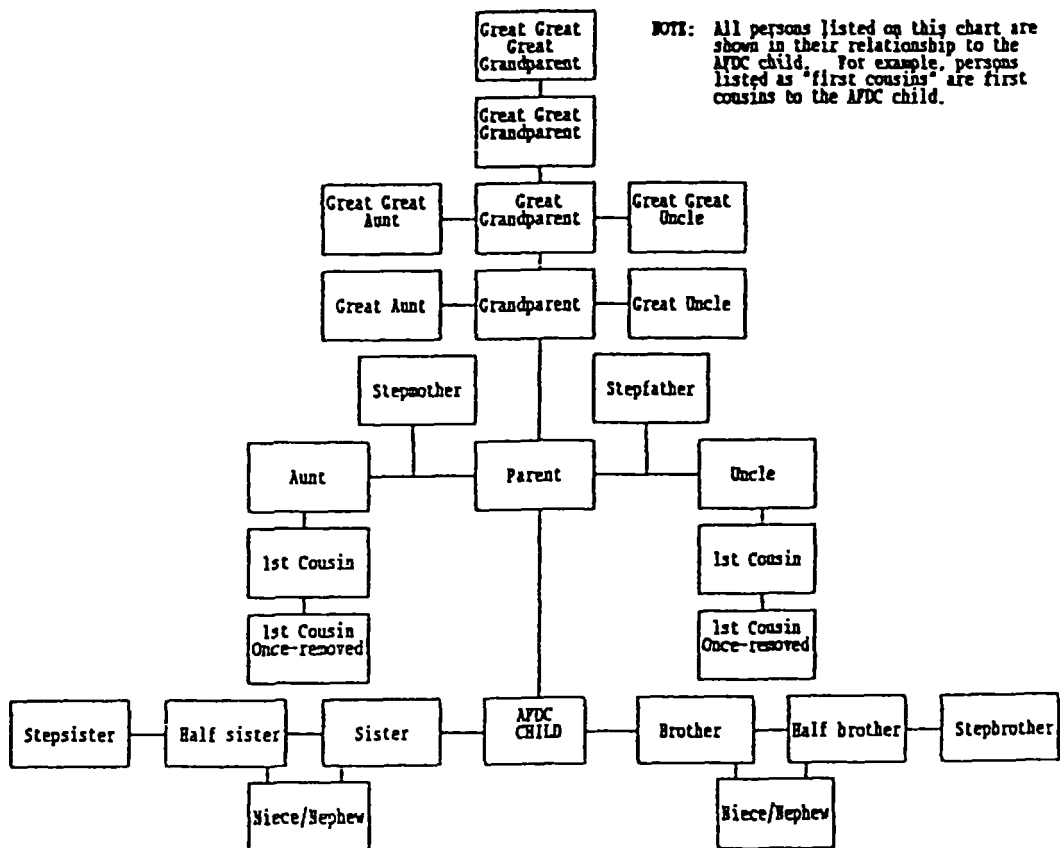


MEDI-CAL ELIGIBILITY PROCEDURES MANUAL

APPENDIX A

HANDBOOK BEGINS HERE

CHART FOR DETERMINING RELATEDNESS OF CARETAKER RELATIVES



- 1) The caretaker relative also includes the spouse or former spouse of the relatives listed above.
- 2) The caretaker relative also includes the adoptive parents and their relatives as listed above.

HANDBOOK ENDS HERE

CALIFORNIA-DSS-MANUAL-EAS

MANUAL LETTER NO.EAS-98-03

Effective 7/1/98

Page 919